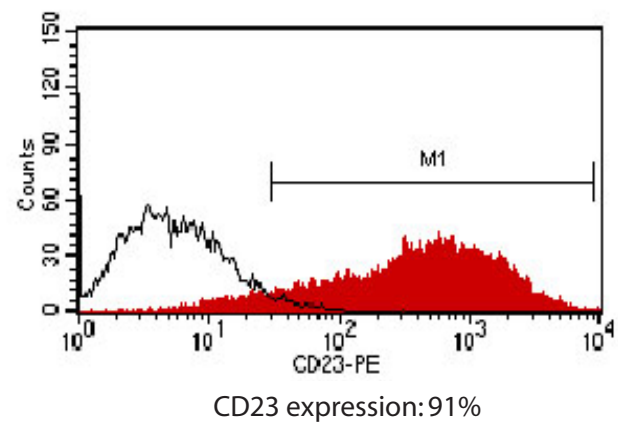
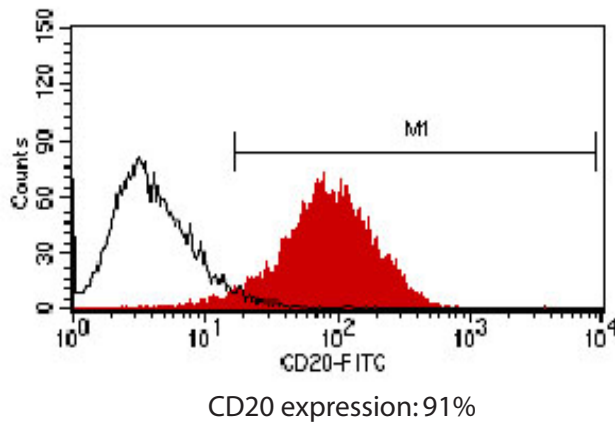
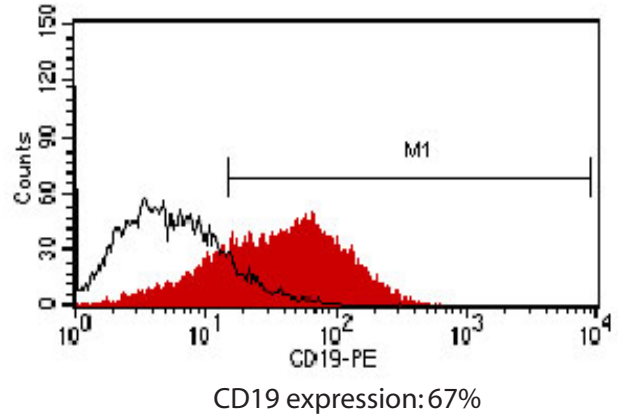
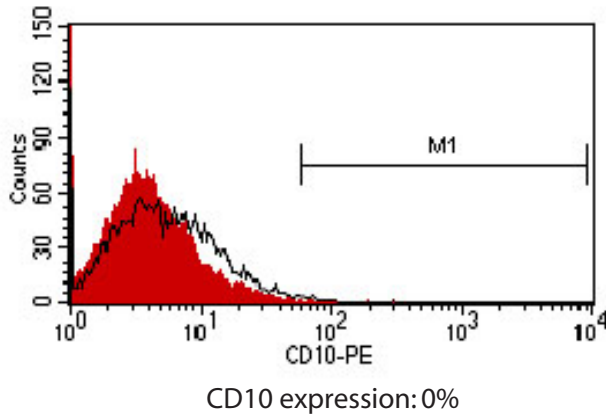
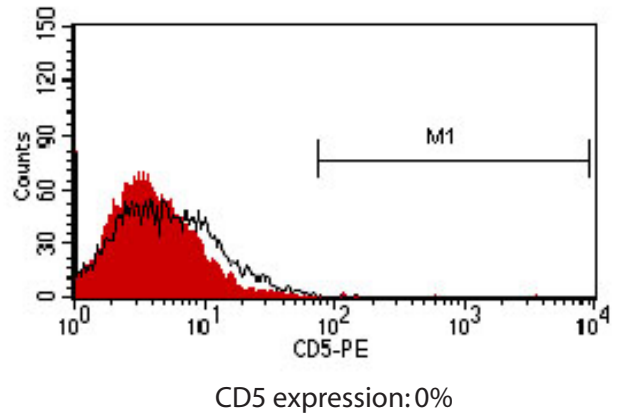
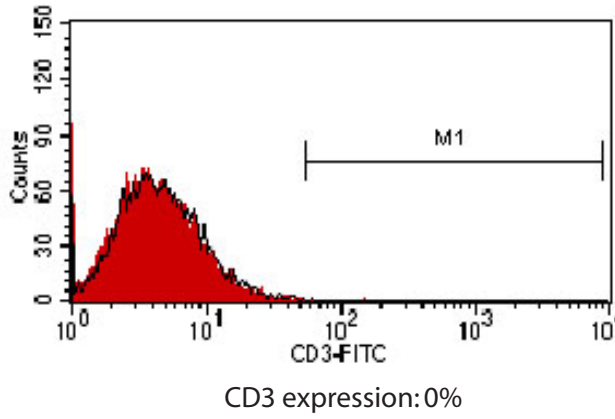
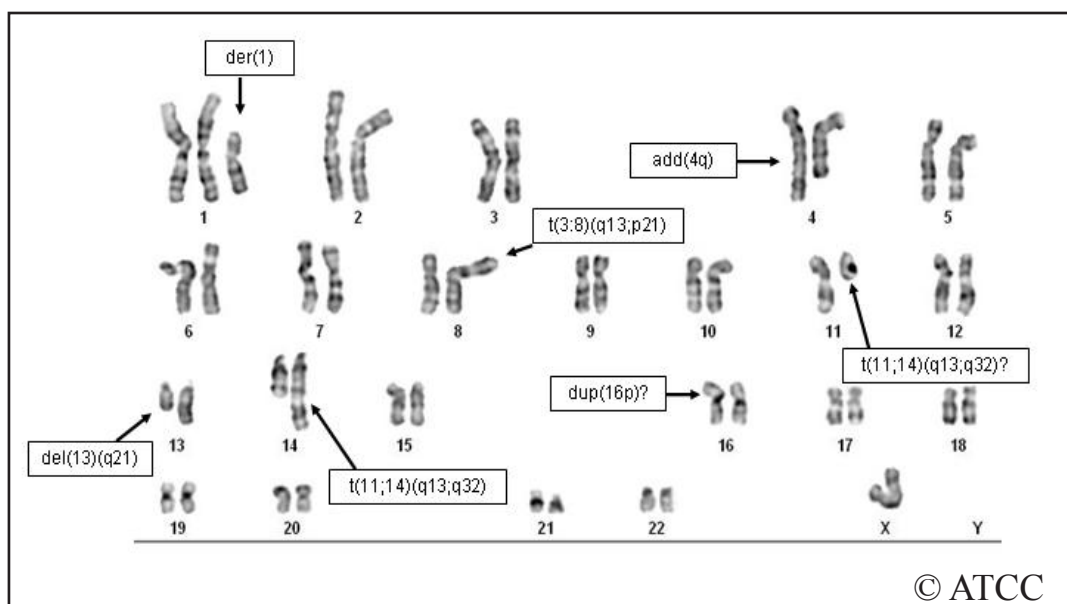


ATCC® CRL-3002™ (JVM-2)

Biomarkers - Flow cytometry



Cytogenetic analysis - G-banding



Bimodal chromosome number: 46 and 92

This is a bimodal female cell line with approximately half the cells being pseudodiploid and the other half pseudotetraploid. Most of the cells examined contained the $t(11;14)(q13;q32)$ derivative chromosome common to Mantle Cell Lymphoma. Other derivative chromosomes included: $t(3;8)(q13;p21)$, $add(4q)$ [or $t(4;13)(q2?5;q1?4)$], $del(13)(q21)$ and $dup(16p)$.