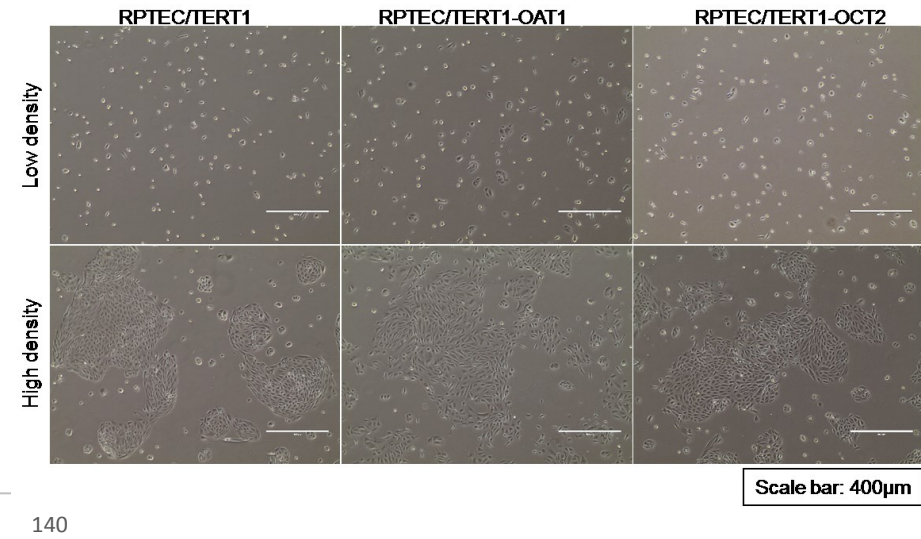
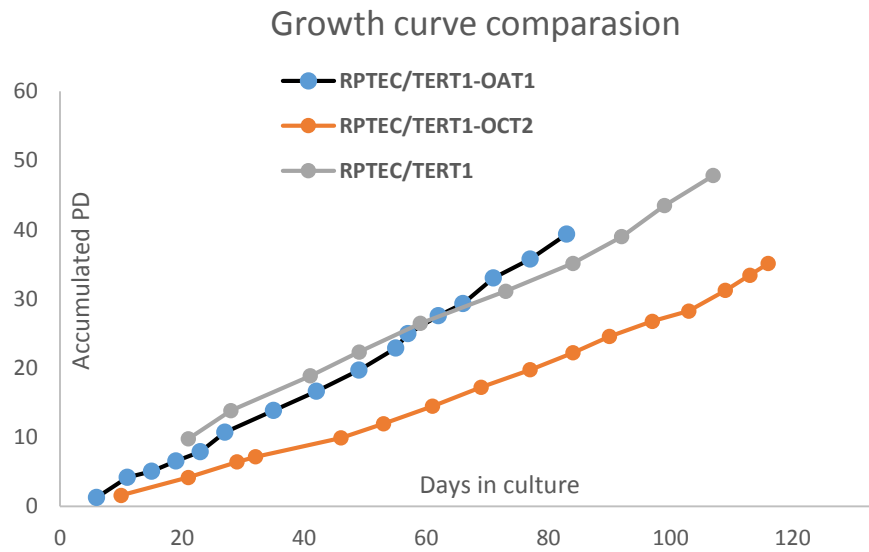
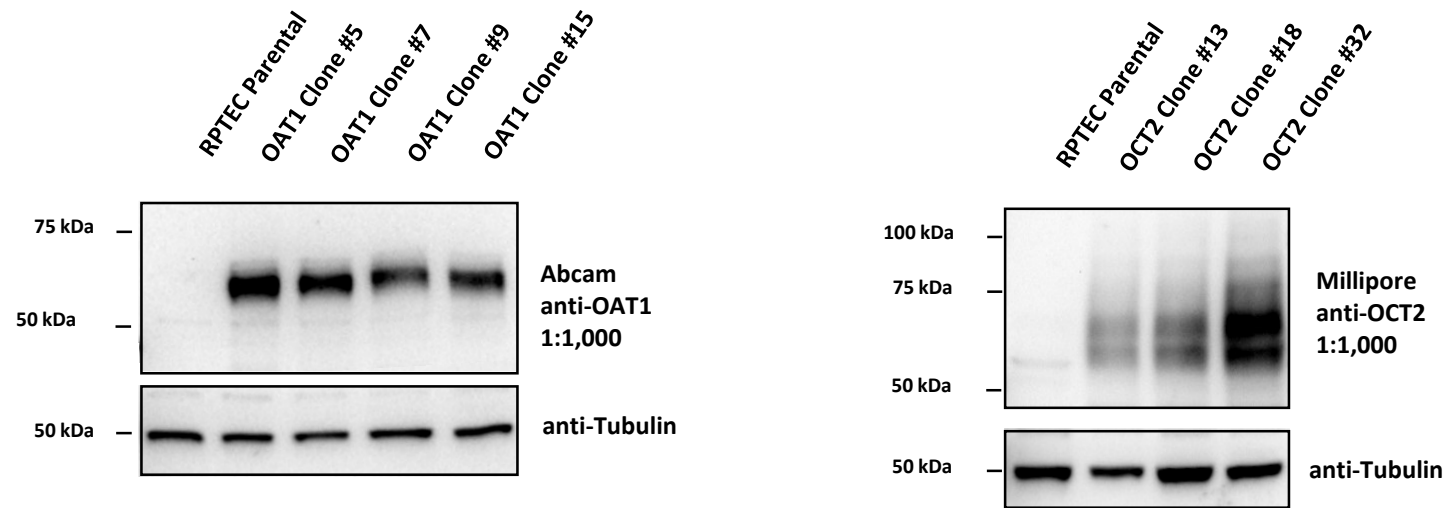


Kidney SLC Transporter Toxicity Models: RPTEC/TERT1-OAT1 and OCT2

Growth Curve and Morphology

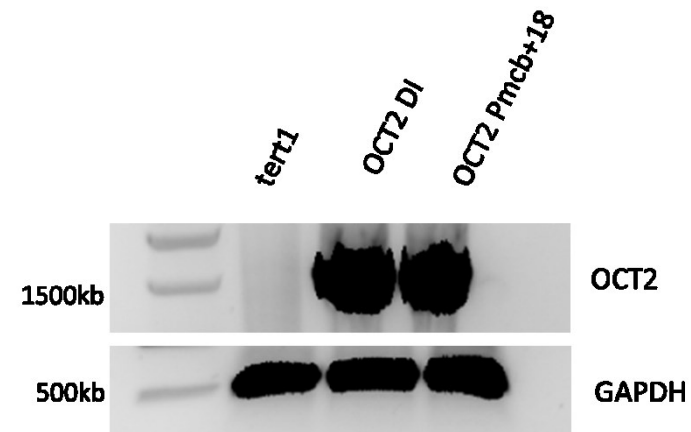
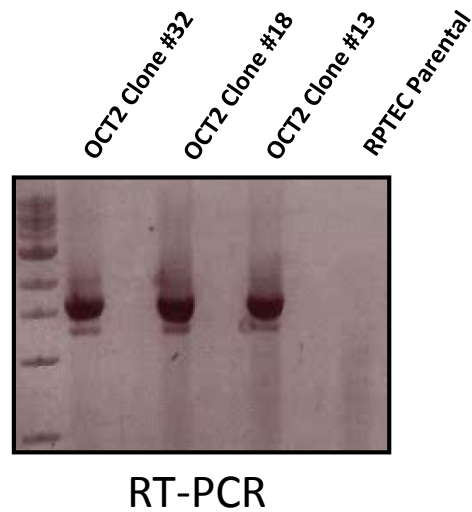
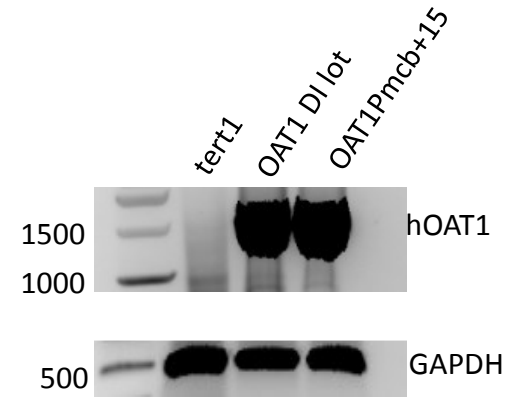
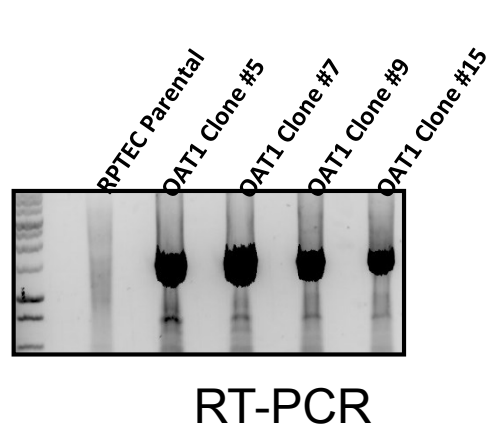


OAT1, OCT2 western blot, presence of OAT1, OCT2 when compared to parental line



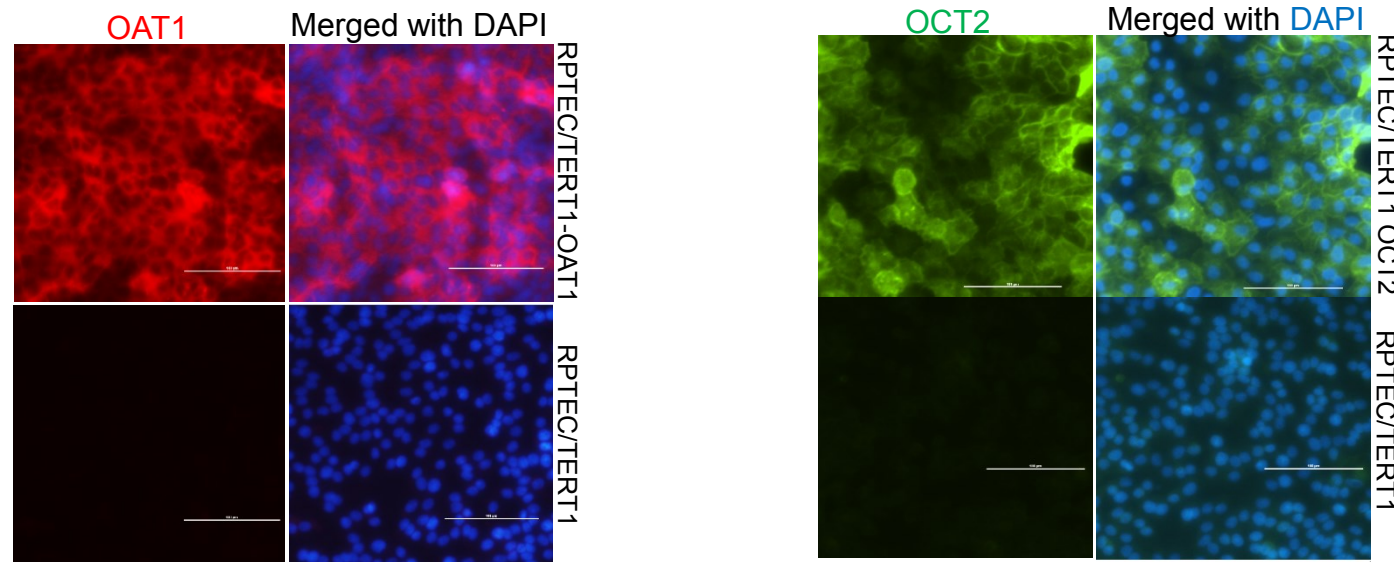
Western Blot

OAT1, and OCT2 presence detected in RT-PCR early and late passage



MCB, DI and MCB+15 passages

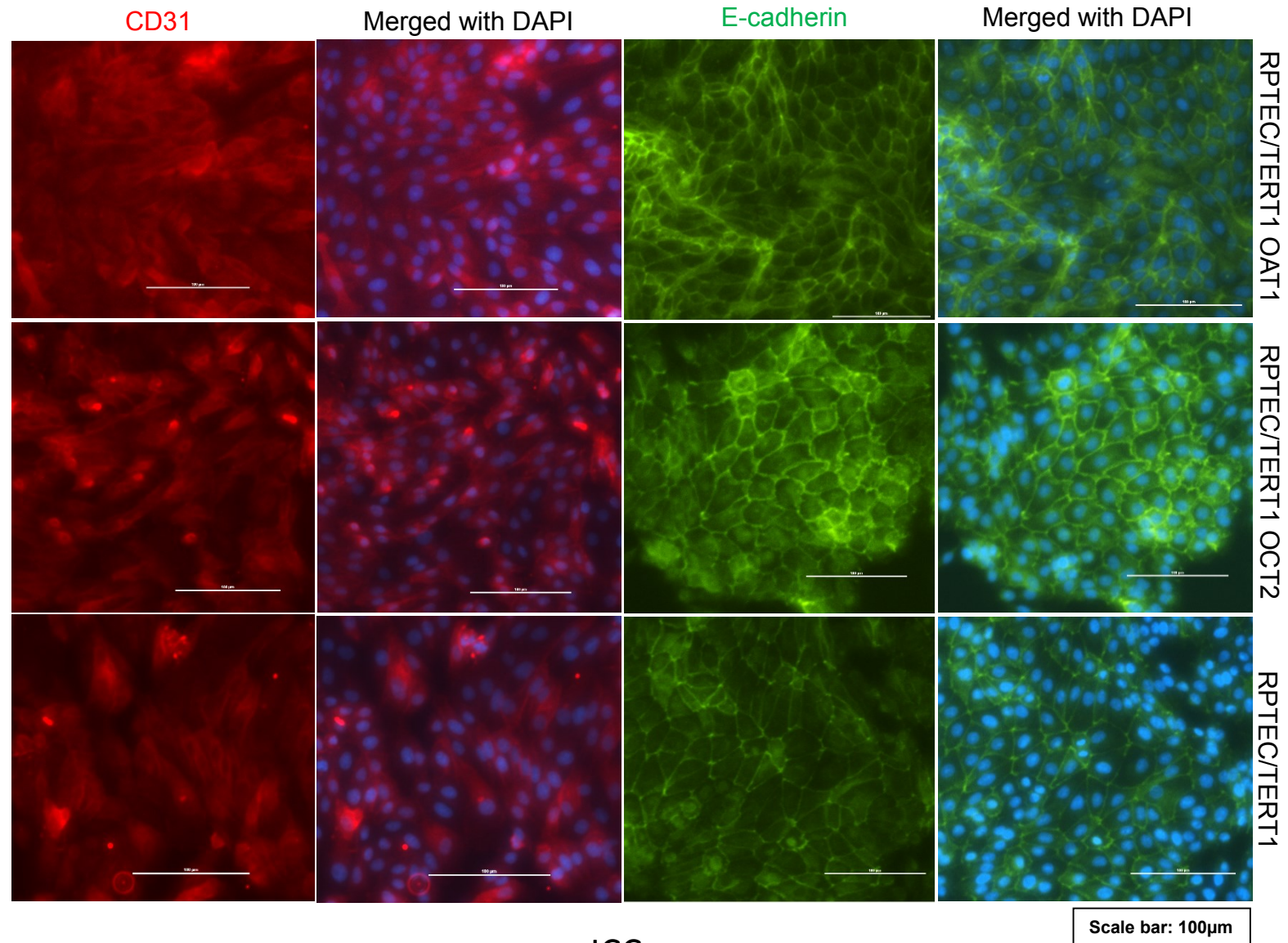
Surface markers and method of detection: OAT1 and OCT2



Scale bar: 100µm

ICC

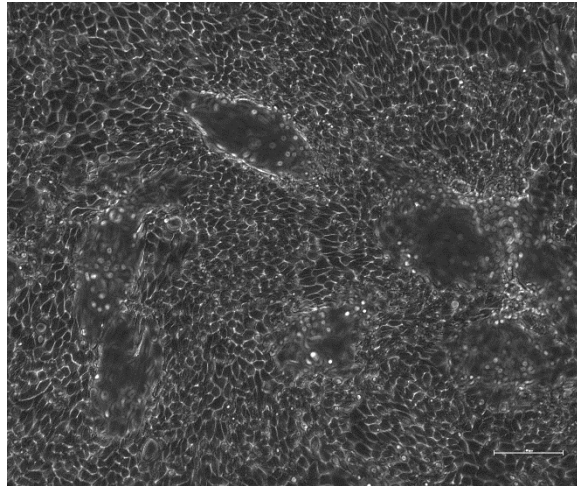
Surface markers and method of detection: OAT1 and OCT2



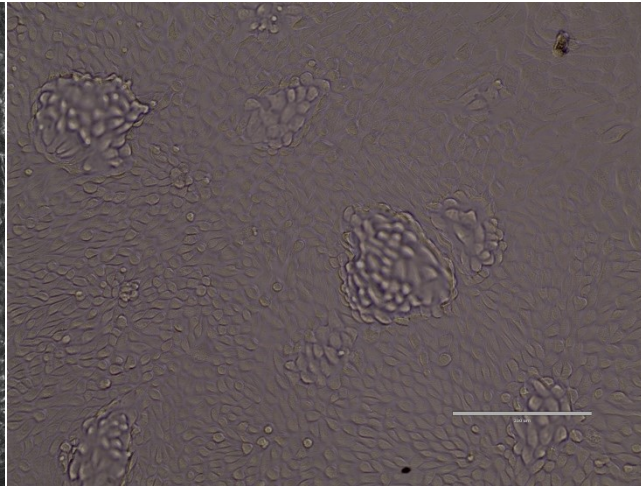
ICC

Dome formation

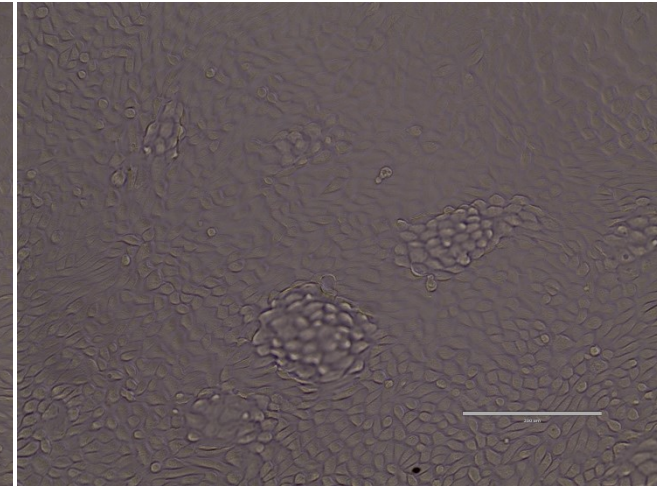
RPTEC/TERT1



RPTEC/TERT1-OAT1

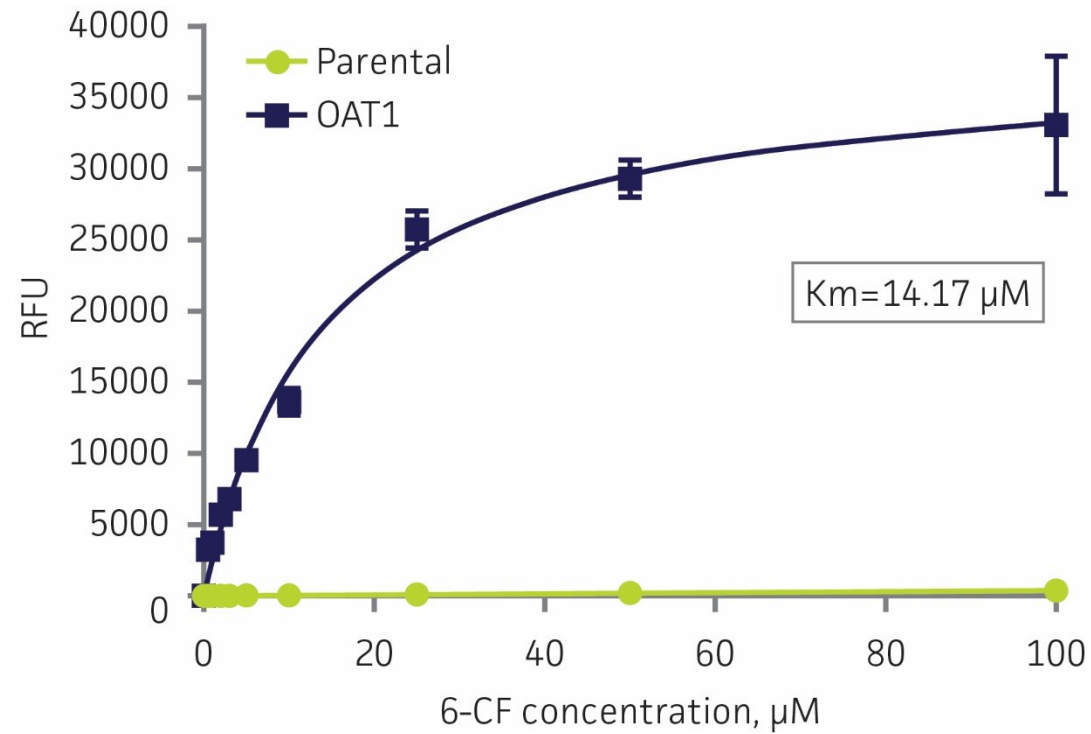


RPTEC/TERT1-OCT2



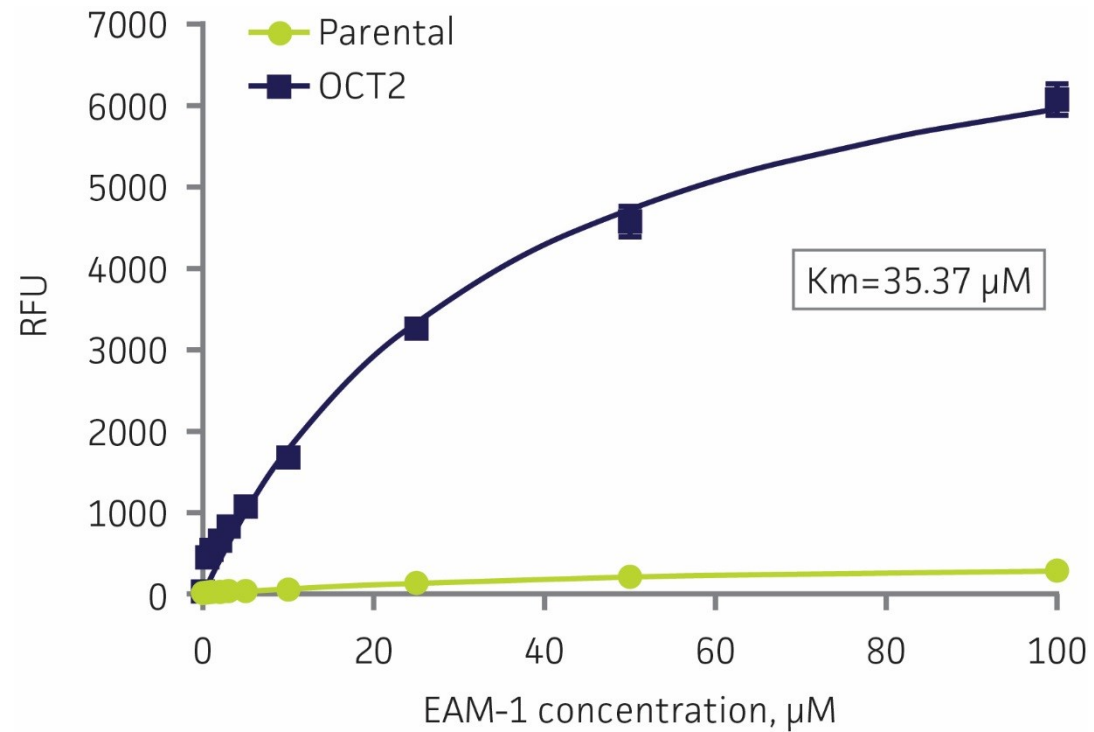
Scale bar: 100µm

OAT1 drug kinetics displays high uptake sensitivity



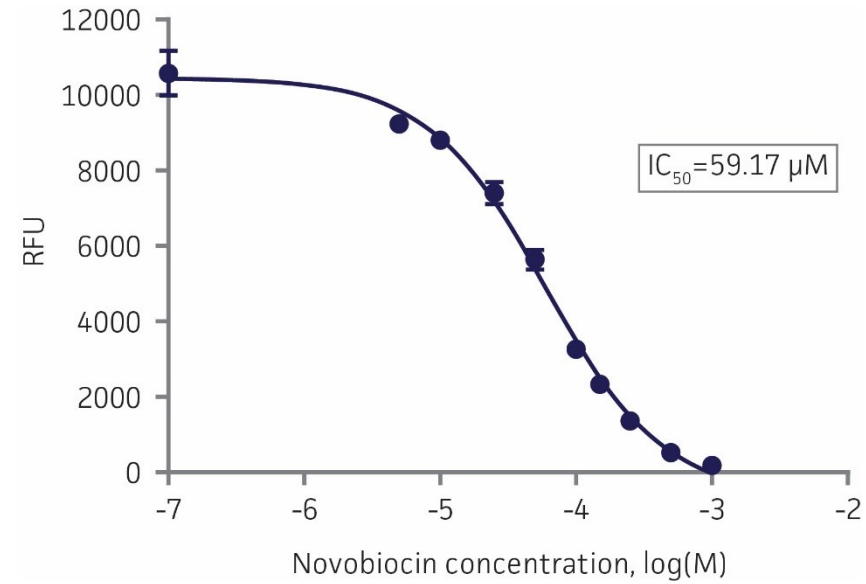
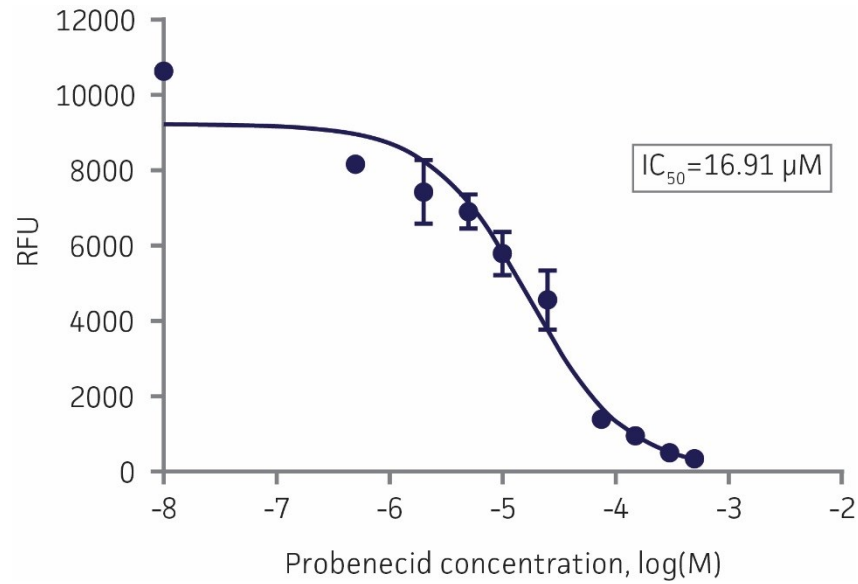
| 6-CF concentration | 0 μM | 0.5 μM | 1 μM | 2 μM | 3 μM | 5 μM | 10 μM | 25 μM | 50 μM | 100 μM |
|--------------------|-----------------|-------------------|-----------------|-----------------|-----------------|-----------------|------------------|------------------|------------------|-------------------|
| Uptake ratio | 1.16 | 169.67 | 226.94 | 239.13 | 260.74 | 274.13 | 287.70 | 198.19 | 146.07 | 84.16 |

OCT2 drug kinetics displays high uptake sensitivity



| EAM-1 concentration | 0 μM | 0.5 μM | 1 μM | 2 μM | 3 μM | 5 μM | 10 μM | 25 μM | 50 μM | 100 μM |
|---------------------|-----------------|-------------------|-----------------|-----------------|-----------------|-----------------|------------------|------------------|------------------|-------------------|
| Uptake ratio | 2.27 | 21.56 | 23.01 | 22.65 | 22.73 | 28.13 | 29.92 | 23.72 | 21.58 | 21.22 |

OAT1 inhibitors block RPTEC/TERT1-OAT1 6-CF uptake and show high specificity



OCT2 inhibitors block RPTEC/TERT1-OCT2 EAM-1 uptake and show high specificity

