

Technical Data Sheet: B16-F10-Luc2

ATCC® Number	CRL-6475-LUC2™
Organism	<i>Mus musculus</i>
Tissue/Disease Source	Melanoma
Product Description	<p>This luciferase expressing cell line was derived from B16-F10 cell line by transduction with lentiviral vector encoding firefly luciferase gene (<i>luc2</i>) and subsequently through single cell cloning.</p> <ul style="list-style-type: none"> • Signal noise ratio: $\geq 1,000$ • Bioluminescence: $\geq 20,000$ photons/cell/sec (subject to imaging and culture condition) • Confirmed to be murine pathogen free
Application	Excellent signal/background ratio and stable Luciferase expression make this cell line ideal for <i>in vivo</i> bioluminescence imaging of xenograft animal model to study human cancer and monitor activity of anti-cancer drug. It also can be used in cell-based assays for cancer research.

In vivo Bioluminescent Imaging

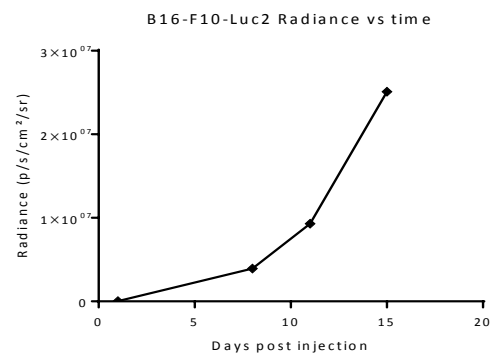
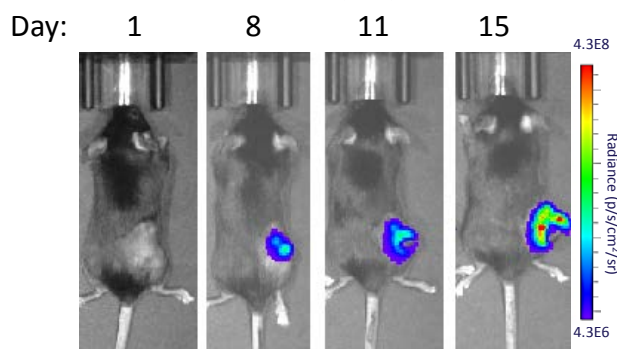


Figure 1: *In vivo* detection of luciferase activity of B16-F10-Luc2. B16-F10-Luc2 cells (2×10^6) were injected subcutaneously into the dorsal region near the thigh of female C57/BL6 mice. Tumor growth was monitored weekly using a Xenogen IVIS Spectrum. *In vivo* bioluminescence imaging demonstrated the progression of tumors.

Cell Morphology

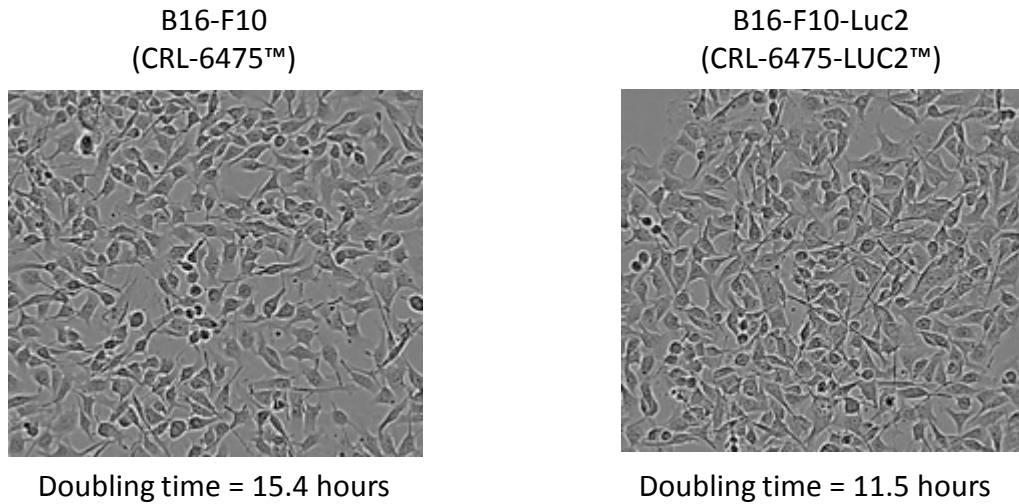


Figure 2: Cell morphology of B16-F10 parental and B16-F10-Luc2. Cells were maintained in ATCC recommended culture conditions. Cell morphology was observed under microscopy and images were captured by digital camera.

Luciferase Expression

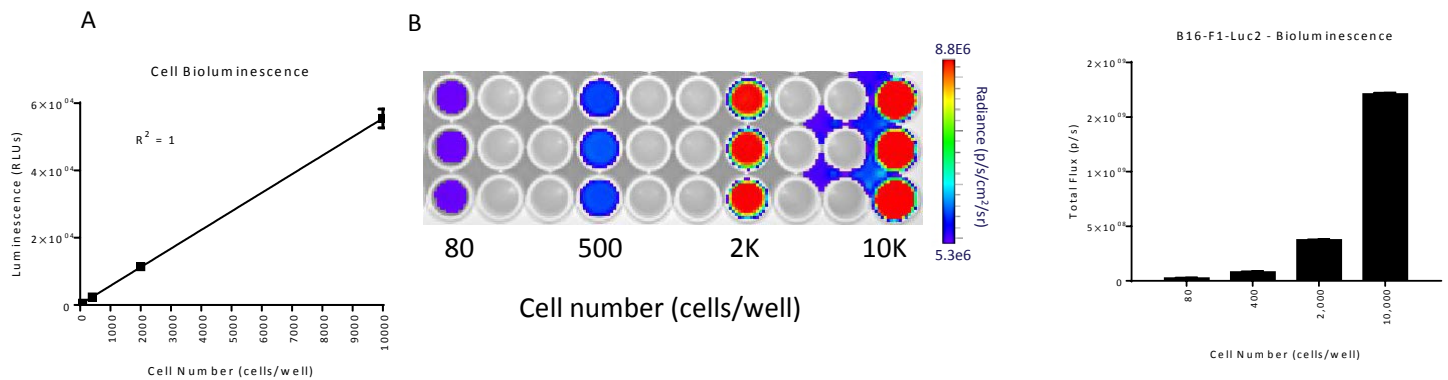


Figure 3: Linearity of luminescence and of *in vitro* quantification of luciferase activity of B16-F10-Luc2. Cells were seeded in a 96-well plate at indicated cell numbers per well, and Bright-Glo (Promega) was added to the indicated wells. The luminescence of the plate was read within 10 minutes using a luminescence plate reader (A) and determined to have a linear correlation of bioluminescence intensity with cell numbers. (B) The plate was imaged using a Xenogen IVIS Spectrum to quantify photons emitted per cell.

© 2018 American Type Culture Collection. The ATCC trademark and trade name, and any other trademarks listed in this publication are owned by the American Type Culture Collection unless indicated otherwise.

These products are for laboratory use only. Not for human or diagnostic use. ATCC products may not be resold, modified for resale, used to provide commercial services, or to manufacture commercial products without prior ATCC written approval.