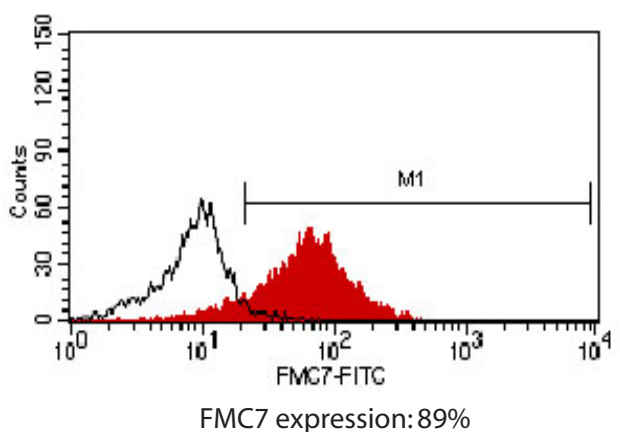
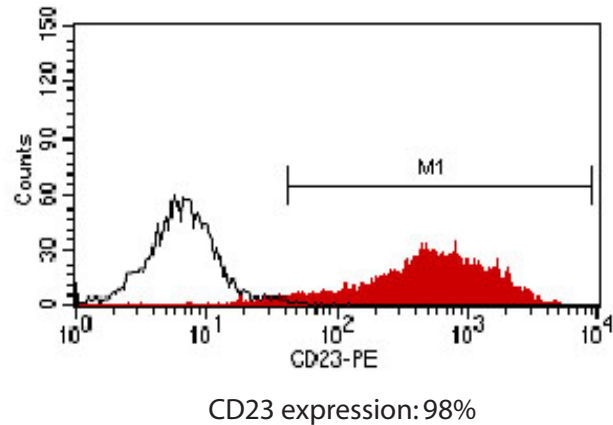
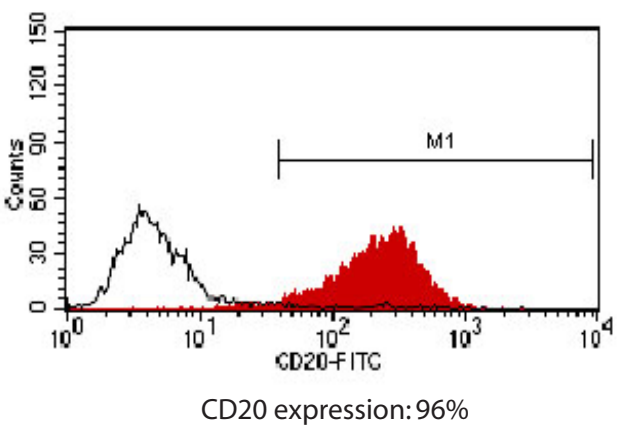
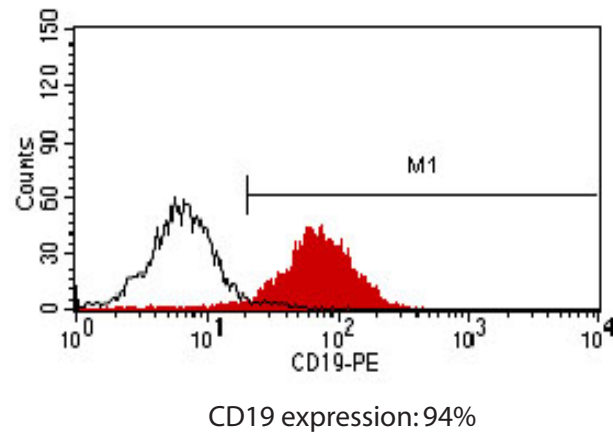
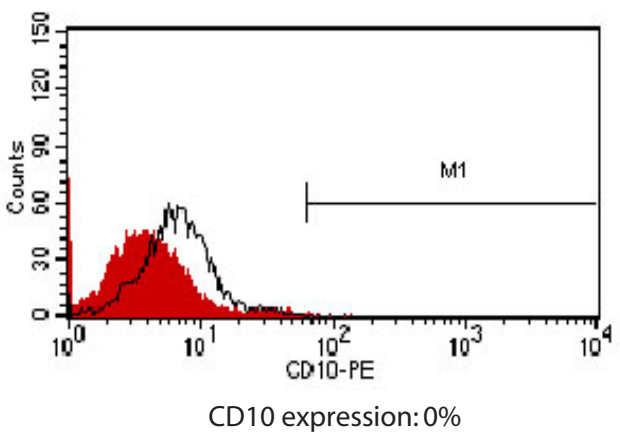
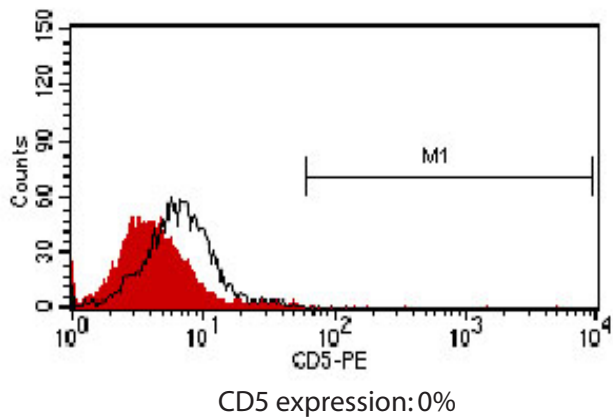
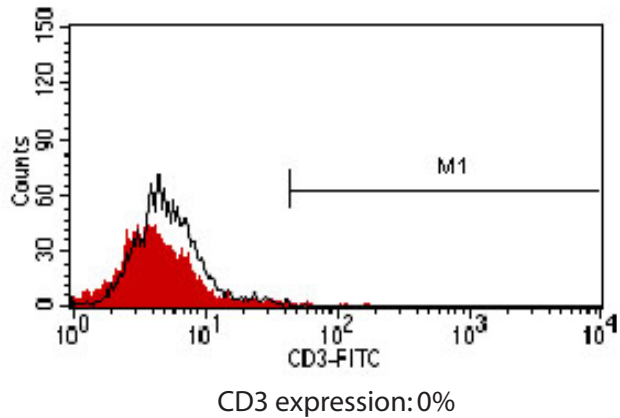
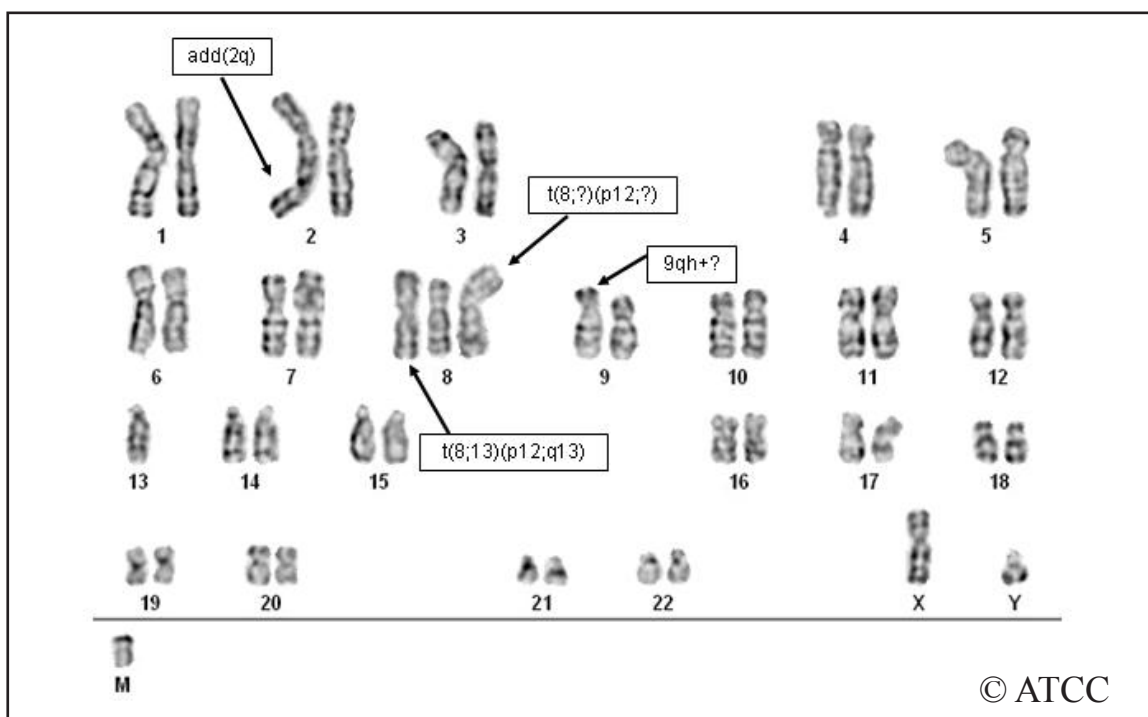


ATCC® CRL-3003™ (JVM-13)

Biomarkers - Flow cytometry



Cytogenetic analysis - G-banding



Modal chromosome number: 47

This is a pseudodiploid human cell line of male origin with a modal chromosome number of 47. Most of the examined cells contained the derivative chromosomes: add(2q), t(8;13)(p12;q13) and t(8;?)(p12;?). Overall, the karyology was consistent with other published data.