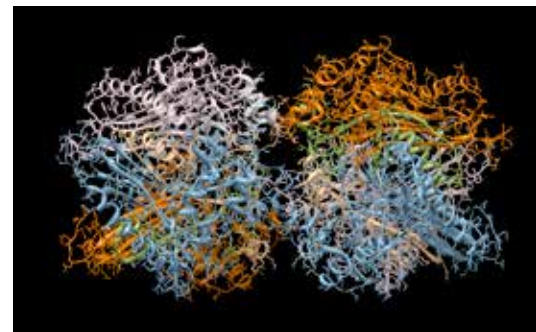




THE ESSENTIALS OF  
LIFE SCIENCE RESEARCH  
**GLOBALLY DELIVERED™**

## Hybridomas by Antigenic Determinant



# INTRODUCTION

Hybridomas are immortalized cells derived from the fusion of specific antibody-producing B lymphoblasts with a myeloma cell. Hybridomas are widely used to produce monoclonal antibodies for tissue and cell studies, diagnostic applications, and drug discovery research. Some hybridomas in the ATCC collection are somatic cell hybrids. These cells are capable of producing immunoglobulins that are specific for viral, bacterial, or cellular targets.

- Authenticated and reliable
- Traceable to the original depositor
- Convenient

There are approximately 1,000 hybridomas in ATCC's Cell Biology Collection. They are listed below by the antigenic determinant recognized by their expressed monoclonal antibodies. To find more information on a hybridoma, use the catalog number or enter the name of your antigen of interest into the search box on the ATCC homepage ([www.atcc.org](http://www.atcc.org)).

**THE ESSENTIALS  
OF LIFE SCIENCE  
RESEARCH  
GLOBALLY  
DELIVERED™**

**ATCC provides research and development tools and reagents as well as related biological material management services, consistent with its mission: to acquire, authenticate, preserve, develop, and distribute standard reference microorganisms, cell lines, and related materials for research in the life sciences.**

For over 85 years, ATCC has been a leading provider of high-quality biological materials and standards to the life science community. We are an independent, 501(c)(3) non-profit entity focused on scientific enablement at universities, research institutes, government agencies, and commercial research labs. Our diverse and comprehensive resources in cell biology and microbiology have been central to the growth of the biotechnology age. ATCC has as its core mission to source,

authenticate and further develop products and services essential to the needs of basic and applied life science work.

ATCC distributes to more than 165 countries on 6 continents and has a growing international network of 12 distribution partners. Our infrastructure and experience in biological materials logistics enables us to work effectively with researchers no matter where they are located.

| ATCC® No. | Name                                | Antigenic Determinant  | Species of Hybridoma | Isotype |
|-----------|-------------------------------------|--|----------------------|---------|
| CRL-1996™ | KL295                               | Ab/beta protein (domain beta 1), mouse                                   | Mouse                | IgG1    |
| HB-72™    | AE-1                                | Acetylcholin esterase, human   | Mouse                | IgG1    |
| HB-73™    | AE-2                                | Acetylcholin esterase, human   | Mouse                | IgG1    |
| HB-189™   | mAb270                              | Acetylcholine, neuronal receptor   | Rat, Mouse           | IgG2a   |
| HB-8987™  | mAb64                               | AChR alpha   | Rat                  | IgG2a   |
| TIB-175™  | mAb35                               | AChR alpha   | Rat, Mouse           | IgG1    |
| HB-80™    | ACT1                                | Actin  | Mouse                | IgG1    |
| HB-81™    | ACTIV                               | Actin  | Mouse                | IgG1    |
| CRL-2252™ | G-3-5                               | Actinin, alpha   | Mouse                | IgM     |
| HB-8466™  | 158.2[MA158.2]                      | Activated macrophages, mouse   | Rat, Mouse           | IgG2a   |
| HB-11103™ | 10D2F6                              | Activated human T cells  | Mouse                | IgG1    |
| HB-8117™  | 2Hx-2                               | Adenovirus group specific antigen  | Mouse                | IgG2a   |
| CRL-1813™ | 4H1-A7                              | Adenovirus type 1 (CAV-1), canine  | Mouse                | IgG2a   |
| CRL-1812™ | 2E10-H2                             | Adenovirus type 2 (CAV-2), canine  | Mouse                | IgG1    |
| HB-134™   | OM3-1.1                             | AFP, alpha-fetoprotein, human  | Mouse                | IgG1    |
| CRL-2025™ | 2D7F10                              | Agglutination <i>L. interrogans</i> serovar <i>pomona</i> type kennewick | Mouse                | IgA     |
| HB-9463™  | F21-1D3G7C8                         | <i>Agrobacterium tumefaciens</i> Biovar 3                                | Mouse                | IgG1    |
| CRL-1846™ | A2E11                               | Aldosterone  | Mouse                | IgG1    |
| HB-8651™  | DS-3                                | Alveolar surfactant protein (ASP)  | Mouse                | IgG1    |
| HB-8652™  | DS-6                                | Alveolar surfactant protein (ASP)  | Mouse                | IgG1    |
| HB-8653™  | DS-5                                | Alveolar surfactant protein (ASP)  | Mouse                | IgG1    |
| HB-8906™  | DS-1                                | Alveolar surfactant protein (ASP)  | Mouse                | IgG     |
| HB-8191™  | alpha-ACE3.1.1[ACE3.1.1,a-ACE3.1.1] | Angiotensin converting enzyme (ACE)                                      | Mouse                | IgM     |
| CRL-2194™ | EH7a                                | Annexin I and Annexin II, human  | Mouse                | IgG1    |
| CRL-2209™ | EH17a                               | Annexin I, human   | Mouse                | IgG1    |
| CRL-2247™ | WUE-4[1506A1.4]                     | Apo E, human   | Mouse                | IgG1    |
| CRL-2255™ | WUE-14[29CE12-1]                    | Apo E, human   | Mouse                | IgG1    |
| CRL-2275™ | A5.4[1506A5.4]                      | Apo-A-I, human   | Mouse                | IgG2a   |
| HB-8704™  | TA99                                | AS33   | Mouse                | IgG2a   |
| CRL-2405™ | SH-34                               | Asialo-GM1   | Mouse                | IgM     |
| TIB-185™  | 2D4                                 | Asialo-GM2   | Mouse                | IgM     |
| CRL-2253™ | J1-31                               | Astrocyte protein, human   | Mouse                | IgM     |
| HB-11945™ | 7F2-6D4-8E7                         | Astrovirus group antigen   | Mouse                | IgG1    |
| CRL-1844™ | 9-A5                                | ATPase, rat  | Mouse                | IgG1    |
| CRL-1845™ | 9-B1                                | ATPase, rat  | Mouse                | IgG1    |
| HB-8214™  | CBL-1                               | Autocrine growth factor, human   | Mouse                | IgM     |
| TIB-145™  | RA3-2C2/1                           | B cell antigen, mammalian  | Rat, Mouse           | IgM     |
| HB-273™   | CC56                                | B cell, bovine   | Mouse                | IgG2a   |
| HB-8612™  | Lym-1                               | B cells and derived malignancies, human                                  | Mouse                | IgG2a   |
| HB-11341™ | B7-24-E1G4[CMCC11060]               | B7, human  | Mouse                |         |
| CRL-2223™ | 1G10                                | B7.1, mouse  | Rat, Mouse           | IgG2a   |
| CRL-2226™ | 2D10                                | B7.2, mouse  | Rat, Mouse           | IgG2b   |
| HB-253™   | GL1                                 | B7-2, mouse  | Rat, Mouse           | IgG2a   |
| HB-8530™  | VM-2                                | Basal cells (skin), human  | Mouse                | IgG1    |
| CRL-2107™ | bcd mab 23                          | Bicoid (bcd) protein   | Mouse                | IgG1    |
| TIB-230™  | PAb108                              | BK virus   | Mouse                | IgG2a   |
| HB-8534™  | HAA1                                | Blood group A antigen  | Human                |         |
| HB-8377™  | BTV10XSp2/0-Ag14-10D4.90            | Blue tongue virus (BTV, orbivirus)                                       | Mouse                | IgG2a   |
| HB-10611™ | 1H11                                | Bone type I collagen   | Mouse                | IgG1    |
| HB-288™   | CC21                                | BoWC3, bovine  | Mouse                | IgG1    |

| ATCC® No.  | Name                              | Antigenic Determinant                      | Species of Hybridoma | Isotype      |
|------------|-----------------------------------|--|----------------------|--------------|
| HB-268™    | CC57                              | BoWC4, bovine                              | Mouse                | IgG1         |
| HB-282™    | CC55                              | BoWC4, bovine                              | Mouse                | IgG1         |
| CRL-13019™ | BR1H-788.6[PTA-4301]              | BRCA1 peptide                              | Mouse                | IgG1         |
| CRL-13020™ | BR1H-826.5[PTA-4302]              | BRCA1 peptide                              | Mouse                | IgG1         |
| CRL-13021™ | BR1H-945.2[PTA-4303]              | BRCA1 peptide                              | Mouse                | IgG1         |
| CRL-13022™ | BR1N-129.5[PTA-4304]              | BRCA1 peptide                              | Mouse                | IgG1         |
| CRL-13024™ | BR1S-060.2[PTA-4306]              | BRCA1 peptide                              | Mouse                | IgG1         |
| CRL-13026™ | BR1S-384.5[PTA-4308]              | BRCA1 peptide                              | Mouse                | IgG1         |
| CRL-13027™ | BR1S-425.1[PTA-4309]              | BRCA1 peptide                              | Mouse                | IgG2b        |
| HB-8484™   | 454C11                            | Breast cancer cells, human                 | Mouse                | IgG2a        |
| HB-8696™   | 520C9[520C9.C3B10T]               | Breast cancer cells, human                 | Mouse                | IgG1         |
| HB-10812™  | 650E2-2B12,CMCC#10121(IVI10083)   | Breast cancer cells, human                 | Mouse                | IgG1         |
| HB-188™    | 11B11[BSF-1]                      | BSF-1, IL-4, BCGF-1, mouse and rat         | Rat, Mouse           | IgG1         |
| HB-8592™   | Mab543                            | C3b receptor, human                        | Mouse                | IgG1         |
| CRL-2588™  | P-1[P1]                           | Calpain, the small subunit                 | Mouse                | IgG1         |
| CRL-2591™  | PI-11                             | Calpastatin, human                         | Mouse                | IgG1         |
| CRL-2379™  | Rmcb                              | CAR, human                                 | Mouse                | IgG1         |
| CRL-8019™  | 1116NS-3d                         | Carcino embryonic antigen (CEA)            | Mouse                | IgM          |
| HB-8747™   | T84.66A3.1A.1F2[T84.66.A3.1-H-11] | Carcino embryonic antigen (CEA)            | Mouse                | IgG1         |
| HB-8779™   | AS33                              | Carcinoma cell lines, colon and pancreatic | Mouse                | IgG2a, IgG2a |
| HB-8710™   | KC-4M1[KC-4(IgM)]                 | Carcinoma cells, human                     | Mouse                | IgM          |
| HB-8709™   | KC-4G3[KC-4(IgG3)]                | Carcinoma cells, human                     | Mouse                | IgG3         |
| HB-8633™   | VLN6H2                            | Carcinoma of the vulva, human              | Human                | IgG          |
| HB-8636™   | VLN3G2                            | Carcinoma of the vulva, human              | Human                | IgG4         |
| HB-12314™  | PCA31.1                           | CCAA, human                                | Mouse                | IgG1         |
| HB-12315™  | PCA33.28                          | CCAA, human                                | Mouse                | IgG2a        |
| HB-12644™  | LS-125-2D4-11-10-1[2D4]           | CCR1, human                                | Mouse                | IgG1         |
| HB-12549™  | LS132.1D9[1D9]                    | CCR2, human                                | Mouse                | IgG2a        |
| HB-12550™  | LS132.8G2[8G2]                    | CCR2, human                                | Mouse                | IgM          |
| HB-12624™  | 1G1[LS141-1G1-65-15-1]            | CCR4, human                                | Mouse                | IgG1         |
| HB-12653™  | LS129-3C3-E3-1[3C3]               | CCR9 (GPR-9-6)                             | Mouse                | IgG2b        |
| HB-267™    | CC20                              | CD1 (BoCD1w2), bovine                      | Mouse                | IgG2a        |
| HB-321™    | 19F8                              | CD1.1, mouse                               | Rat, Mouse           | IgG2b        |
| HB-322™    | 15F7                              | CD1.1, mouse                               | Rat, Mouse           | IgG2b        |
| HB-323™    | 20H2                              | CD1.1, mouse                               | Rat, Mouse           | IgG1         |
| HB-326™    | 15C6                              | CD1.1, mouse                               | Rat, Mouse           | IgG2b        |
| HB-327™    | 4C4                               | CD1.1, mouse                               | Rat, Mouse           | IgG2b        |
| HB-140™    | 76-7-4                            | CD1; cytotoxic, pig                        | Mouse                | IgG2a        |
| HB-248™    | 17aba                             | CD11b, human                               | Mouse                | IgM          |
| HB-249™    | 44aacb                            | CD11b, human                               | Mouse                | IgG2a        |
| CRL-8026™  | OKM1                              | CD11b, human                               | Mouse                | IgG2b        |
| HB-9510™   | MY904[904]                        | CD11b, human                               | Mouse                | IgG1         |
| CRL-1969™  | 5C6 Clone 1                       | CD11b, mouse                               | Rat, Mouse           | IgG2b        |
| CRL-2859™  | CBRM1/1                           | CD11b/CD18                                 | Mouse                | IgG2b        |
| HB-246™    | 26ic                              | CD14, human                                | Mouse                | IgG2b        |
| HB-247™    | 60bca                             | CD14, human                                | Mouse                | IgG1         |
| TIB-228™   | 3C10                              | CD14, human                                | Mouse                | IgG2b        |
| CRL-2838™  | KIM127                            | CD18                                       | Mouse                | IgG1         |
| HB-10164™  | IB4                               | CD18, human                                | Mouse                | IgG2a        |
| HB-226™    | 2E6                               | CD18, mouse                                | Hamster, mouse       | IgG          |

| ATCC® No. | Name                      | Antigenic Determinant             | Species of Hybridoma | Isotype |
|-----------|---------------------------|-----------------------------------|----------------------|---------|
| HB-305™   | 1D3                       | CD19, mouse                       | Rat, Mouse           | IgG2a   |
| HB-272™   | CC42                      | CD2, bovine                       | Mouse                | IgG1    |
| CRL-1870™ | IL-A42                    | CD2, bovine                       | Mouse                | IgG2a   |
| HB-222™   | 35.1                      | CD2, human                        | Mouse                | IgG2a   |
| CRL-8027™ | OKT11                     | CD2, human                        | Mouse                | IgG1    |
| HB-285™   | 36F-18C[36F]              | CD2, sheep                        | Mouse                | IgG2a   |
| HB-9645™  | 1F5                       | CD20 (Bp35), human                | Mouse                | IgG2a   |
| HB-9303™  | C273                      | CD20, human                       | Mouse                | IgG1    |
| HB-271™   | CC51                      | CD21 (BoCD21), bovine             | Mouse                | IgG2b   |
| HB-135™   | THB-5[HB-5,HB5]           | CD21, CR2, EBV, human             | Mouse                | IgG2a   |
| HB-12352™ | PV1                       | CD28, mouse                       | Hamster, mouse       | IgG     |
| HB-243™   | TS2/16.2.1                | CD29, VLA-1 beta, integrin beta 1 | Mouse                | IgG1    |
| HB-10166™ | BC3                       | CD3 epsilon chain, human          | Mouse                | IgG2b   |
| HB-231™   | 38.1                      | CD3, human                        | Mouse                | IgM     |
| CRL-8001™ | OKT3                      | CD3, human                        | Mouse                | IgG2a   |
| CRL-1975™ | 145-2C11                  | CD3, mouse                        | Hamster, mouse       | IgG     |
| HB-217™   | IV.3                      | CD32                              | Mouse                | IgG2b   |
| HB-136™   | THB-7[HB-7,HB7]           | CD38, human                       | Mouse                | IgG1    |
| CRL-8022™ | OKT10                     | CD38, human                       | Mouse                | IgG1    |
| HB-270™   | CC30                      | CD4 (BoCD4), bovine               | Mouse                | IgG1    |
| HB-280™   | CC8                       | CD4 (BoCD4), bovine               | Mouse                | IgG2a   |
| HB-269™   | CC29                      | CD4 (BoCD5), bovine               | Mouse                | IgG1    |
| HB-281™   | CC17                      | CD4 (BoCD5), bovine               | Mouse                | IgG1    |
| HB-266™   | CC38                      | CD4 (BoCD6), bovine               | Mouse                | IgG2b   |
| CRL-1879™ | IL-A11                    | CD4, bovine                       | Mouse                | IgG2a   |
| CRL-8002™ | OKT4                      | CD4, human                        | Mouse                | IgG2b   |
| HB-262™   | 17D                       | CD4, sheep                        | Mouse                | IgG1    |
| CRL-2580™ | MR1[derivativeofHB-11048] | CD40 (CD154,CD40L, gp39), mouse   | Hamster, mouse       | IgG     |
| HB-10916™ | 5c8                       | CD40 (CD40L,CD154), human         | Mouse                | IgG2a   |
| HB-9110™  | G28-5                     | CD40, human                       | Mouse                | IgG1    |
| HB-12024™ | 3A8[CMCC#11066]           | CD40, human                       | Mouse                | IgG2b   |
| HB-257™   | FW11-10-3                 | CD44 v4, human                    | Mouse                | IgG2a   |
| HB-256™   | FW11-9-2                  | CD44 v6, human                    | Mouse                | IgG2a   |
| HB-258™   | FW11-24-17-36             | CD44 v9, human                    | Mouse                | IgG1    |
| HB-310™   | LYK-5                     | CD44, mouse                       | Rat, Mouse           | IgG1    |
| HB-316™   | LYK-12                    | CD44, mouse                       | Rat, Mouse           | IgG2a   |
| HB-319™   | LYK-16                    | CD44, mouse                       | Rat, Mouse           | IgG2a   |
| HB-306™   | LYK-1                     | CD44, mouse and rat               | Rat, Mouse           | IgG1    |
| HB-311™   | LYK-7                     | CD44, mouse and rat               | Rat, Mouse           | IgG1    |
| HB-312™   | LYK-8                     | CD44, mouse and rat               | Rat, Mouse           | IgG2a   |
| HB-313™   | LYK-9                     | CD44, mouse and rat               | Rat, Mouse           | IgG2a   |
| HB-10508™ | 9.4                       | CD45(T-200)                       | Mouse                | IgG2a   |
| HB-196™   | 4B2                       | CD45, human                       | Mouse                | IgG2a   |
| HB-12™    | GAP8.3                    | CD45, human                       | Mouse                | IgG2a   |
| HB-220™   | MB23G2                    | CD45, mouse                       | Rat, Mouse           | IgG2a   |
| HB-223™   | MB4B4                     | CD45, mouse                       | Rat, Mouse           | IgG2a   |
| HB-156™   | 74-9-3                    | CD45, pig                         | Mouse                | IgM     |
| TIB-164™  | 14.8                      | CD45R A, mouse                    | Rat, Mouse           | IgG2b   |
| TIB-146™  | RA3-3A1/6.1               | CD45R, mouse                      | Rat, Mouse           | IgM     |
| HB-251™   | I/24.D6                   | CD45RC, mouse                     | Rat, Mouse           | IgM     |

| ATCC® No. | Name                    | Antigenic Determinant  | Species of Hybridoma | Isotype     |
|-----------|-------------------------|--|----------------------|-------------|
| HB-245™   | TS2/7.1.1               | CD49a, VLA-1, integrin   | Mouse                | IgG1        |
| HB-147™   | 74-12-4                 | CD4a, pig  | Mouse                | IgG2b       |
| CRL-8000™ | OKT1                    | CD5, human   | Mouse                | IgG1        |
| TIB-200™  | HNK-1[HNK1,Leu7]        | CD57, human  | Mouse                | IgM         |
| HB-8136™  | 3Pt12B8                 | CD6, human   | Mouse                | IgM         |
| HB-228™   | 12.1                    | CD6, human   | Mouse                | IgG2a       |
| HB-284™   | 1H3                     | CD62L, human   | Mouse                | IgG2a       |
| HB-264™   | CC63                    | CD8 (BoCD8), bovine  | Mouse                | IgG2a       |
| HB-275™   | CC58                    | CD8 (BoCD8), bovine  | Mouse                | IgG1        |
| HB-9579™  | S6F1                    | CD8 (LFA-1), human   | Mouse                | IgG1        |
| CRL-1871™ | IL-A51                  | CD8, bovine  | Mouse                | IgG1        |
| HB-230™   | 51.1                    | CD8, human   | Mouse                | IgG2a       |
| CRL-8014™ | OKT8                    | CD8, human   | Mouse                | IgG2a       |
| HB-301™   | 16-10A1                 | CD80 (B7-1), mouse and rat   | Hamster, mouse       | IgG         |
| CRL-2212™ | KMC8.8                  | CD9, mouse   | Rat, Mouse           | IgG2a       |
| CRL-2695™ | 41-2[PTA-226]           | CDPC1 (SIMA135)  | Mouse                | gG1         |
| HB-9667™  | 2D-7                    | CENP-B, human  | Mouse                | IgG1        |
| HB-8563™  | 1A3                     | Cervical cancer cells  | Mouse                | IgG1        |
| HB-8206™  | CLNH5.5                 | Cervical carcinoma, human  | Human                | IgM         |
| HB-8307™  | CLNH11.4                | Cervical carcinoma, human  | Human                | IgG1        |
| HB-11300™ | 89MS30                  | <i>Chlamydia</i> genus antigen   | Mouse                | IgG2b       |
| HB-11301™ | 91MS441                 | <i>Chlamydia</i> genus antigen   | Mouse                | IgG1        |
| HB-8705™  | L2I-6                   | <i>Chlamydial</i> lipopolysaccharide                                     | Mouse                | IgG3        |
| CRL-1766™ | MLH1                    | chlorophyll a/b protein complex (LHC-II), higher plants                  | Mouse                | IgG1        |
| CRL-1779™ | MLH2                    | chlorophyll a/b protein complex (LHC-II), higher plants                  | Mouse                | IgG1        |
| HB-8995™  | 2C5-6                   | Cholesterol  | Mouse                | IgM         |
| HB-8766™  | SV63                    | Choriocarcinoma tumor cell antigen, human                                | Mouse                | IgG1        |
| HB-8613™  | Lym-2                   | Chronic lymphocytic leukemia (CLL) cells                                 | Mouse                | IgG1        |
| HB-9419™  | CKMM14.15               | CK-MM and CK-MB, human   | Rat, Mouse           | IgG2a       |
| HB-9421™  | CKMM14.52               | CK-MM, human   | Rat, Mouse           | IgG1        |
| CRL-2027™ | KL304                   | Class II antigens, the beta chain, mouse                                 | Mouse                | IgG2b       |
| CRL-2030™ | KL277                   | Class II antigens, the beta chain, mouse                                 | Hamster, mouse       | IgG         |
| HB-225™   | N22                     | Class II major histocompatibility antigens (monomorphic I-A, I-E), mouse | Hamster, mouse       | IgG         |
| CRL-2227™ | AP6                     | Clathrin coated vesicles, AP-2 adaptor protein                           | Mouse                | IgG1        |
| CRL-2228™ | X22                     | Clathrin heavy chain, human  | Mouse                | IgG1        |
| CRL-2232™ | TD.1                    | Clathrin heavy chain, human  | Mouse                | IgG1        |
| CRL-2229™ | CON.1                   | Clathrin light chain, human  | Mouse                | IgG2b       |
| TIB-137™  | CVC.4                   | Clathrin, bovine Brain   | Mouse                | IgM         |
| TIB-135™  | CVC.1                   | Clathrin, bovine Brain   | Mouse                | IgG1        |
| TIB-138™  | CVC.7                   | Clathrin, bovine Brain   | Mouse                | IgG2a       |
| CRL-2738™ | 133-10F6                | C-myb oncogene peptide   | Mouse                | IgG1 and 2b |
| CRL-1943™ | C44                     | Colchicine   | Mouse                | IgG2a       |
| HB-8240™  | CLT85[SKI294/CLT85]     | Colon adenocarcinoma, human  | Mouse                | IgG1        |
| HB-8248™  | HT29/36[SKI294/HT29/36] | Colon adenocarcinoma, human  | Mouse                | IgG3        |
| HB-9397™  | 7E12H12                 | Colonic protein, human   | Mouse                | IgM         |
| CRL-2701™ | D24                     | Colony stimulating factor-1 (CSF-1)                                      | Rat                  | IgG1 and 2a |
| CRL-2702™ | 5A1                     | Colony stimulating factor-1 (CSF-1)                                      | Rat                  | IgG1        |
| HB-9173™  | XMMCO-791               | Colorectal carcinoma associated tumor antigen                            | Mouse                | IgG2b       |
| HB-8059™  | 1116-NS-19-9            | Colorectal carcinoma monosialoganglioside                                | Mouse                | IgG1        |
| TIB-124™  | M1/89.18.7.HK           | Common leukocyte antigen, mouse  | Rat, Mouse           | IgG2b       |

| ATCC® No. | Name               | Antigenic Determinant   | Species of Hybridoma | Isotype |
|-----------|--------------------|---|----------------------|---------|
| TIB-122™  | M1/9.3.4.HL.2      | Common leukocyte antigen, mouse   | Rat, Mouse           | IgG2a   |
| HB-8327™  | 4A4B11             | Complement C1q, human   | Mouse                | IgG     |
| HB-8328™  | 12A5B7             | Complement C1q, human   | Mouse                | IgG     |
| TIB-147™  | 71A7               | Concanavalin A (ConA)   | Mouse                | IgG1    |
| HB-214™   | CDR2               | Cortical thymic epithelium, human                                       | Mouse                | IgG2b   |
| HB-213™   | CDR1               | Cortical thymic epithelium, mouse                                       | Rat, Mouse           | IgG2a   |
| TIB-183™  | J11d.2             | Cortical thymocytes, erythrocytes, neutrophils and B lymphocytes, mouse | Rat, Mouse           | IgM     |
| HB-181™   | 356-1              | Coxsackie virus B4(CB4)   | Mouse                | IgG2a   |
| HB-182™   | 38-1               | Coxsackie virus B4(CB4)   | Mouse                | IgG2a   |
| HB-185™   | 204-4              | Coxsackie virus B4(CB4)   | Mouse                | IgG2a   |
| HB-186™   | 339-1              | Coxsackie virus B4(CB4)   | Mouse                | IgG2a   |
| CRL-2839™ | KIM185             | CR3 (CD11b/CD18)  | Mouse                | IgG1    |
| HB-86™    | HD2-4              | Creactive protein, human  | Mouse                | IgG2a   |
| HB-12029™ | #490[Mab7]         | <i>Cronartium ribicola</i> antigens                                     | Mouse                | IgM     |
| HB-8207™  | F1A3-23            | CSF-I, human  | Mouse                | IgG1    |
| HB-8208™  | F18AF1             | CSF-I, human  | Mouse                | IgG1    |
| HB-12318™ | A3.6B10            | CTLA-4 (CD152), human   | Mouse                | IgG2a   |
| HB-12319™ | A3.4H2             | CTLA-4 (CD152), human   | Mouse                | IgG2a   |
| HB-11642™ | ER4.7G.11[7G11]    | CTLA-4, human   | Mouse                | IgG2a   |
| HB-304™   | UC10-4F10-11       | CTLA-4, mouse   | Hamster, mouse       | IgG     |
| HB-11485™ | HECA-452           | Cutaneous lymphocyte antigen (CLA), human                               | Rat, Mouse           | IgM     |
| HB-8438™  | M111[M111]         | Cutaneous melanocytes (M-4 antigen system), human                       | Mouse                | IgG1    |
| HB-12330™ | 1C6[LS77-1C6]      | CXCR3, IP-10, Mig   | Mouse                | IgG1    |
| HB-10565™ | mAb13-1            | Cystic fibrosis transmembrane conductance regulator (CFTR)              | Mouse                | IgG1    |
| HB-11946™ | mAB24-2[mAb24-2]   | Cystic fibrosis transmembrane conductance regulator (CFTR)              | Mouse                | IgG1    |
| HB-11947™ | mAB24-1[mAb24-1]   | Cystic fibrosis transmembrane conductance regulator (CFTR)              | Mouse                | IgG2a   |
| HB-12681™ | MAB26-7-5          | Cytochrome P450 1A6   | Mouse                | IgG1    |
| HB-12683™ | MAB1812-4-8        | Cytochrome P450 1A6   | Mouse                | IgG1    |
| HB-12684™ | MAB951-5-1         | Cytochrome P450 1A6   | Mouse                | IgG1    |
| HB-12682™ | MAB151-45-4        | Cytochrome P450 1A6   | Mouse                | IgG1    |
| HB-8693™  | UCD/AB6.01         | Cytokeratin type 8, human   | Mouse                |         |
| HB-8694™  | UCD/PR10.11        | Cytokeratins type 8 and type 18   | Mouse                | IgG     |
| HB-290™   | DEC-205[NLDC-145]  | DEC-205, mouse  | Rat, Mouse           | IgG2a   |
| HB-70™    | deltaTA4-1[dTA4-1] | Delta heavy chain, human  | Mouse                | IgG3    |
| TIB-227™  | 33D1               | Dendritic cells (cytotoxic), mouse                                      | Rat, Mouse           | IgG2b   |
| HB-114™   | D3-2H2-9-21        | Dengue virus complex  | Mouse                | IgG2a   |
| HB-47™    | 15F3-1             | Dengue virus type 1   | Mouse                | IgG1    |
| CRL-2486™ | 18-26-4            | Dengue virus type 2   | Mouse                | IgM     |
| HB-46™    | 3H5-1              | Dengue virus type 2   | Mouse                | IgG1    |
| HB-49™    | 5D4-11             | Dengue virus type 3   | Mouse                | IgG1    |
| HB-48™    | 1H10-6             | Dengue virus type 4   | Mouse                | IgG1    |
| HB-9496™  | XVIE6E6G10         | 1,25-Dihydroxyvitamin D3, pig   | Mouse                | IgG1    |
| CRL-1968™ | UC8-1B9            | Dinitrophenyl (DNP)   | Hamster, mouse       | IgG     |
| HB-8363™  | 16M3F10            | Diphtheria toxin  | Human, Mouse         | IgG     |
| HB-216™   | CDC1C42H11         | Distemper virus (CDV), canine   | Mouse                | IgG1    |
| HB-69™    | MRSS-1(D2D4)       | DNA (single stranded)   | Mouse                | IgG3    |
| CRL-1640™ | SJK-132-20         | DNA polymerase alpha, human   | Mouse                | IgG1    |
| CRL-1644™ | SJK-287-38         | DNA polymerase alpha, human   | Mouse                | IgG1    |
| CRL-1645™ | SJK-237-71         | DNA polymerase alpha, human   | Mouse                | IgG1    |
| CRL-1652™ | STK1               | DNA polymerase alpha, human   | Mouse                | IgG1    |

| ATCC® No. | Name                                | Antigenic Determinant  | Species of Hybridoma | Isotype |
|-----------|-------------------------------------|--|----------------------|---------|
| CRL-2284™ | 3C5.1                               | DNA polymerase epsilon, human                                | Mouse                | IgG2a   |
| CRL-1707™ | 123-10                              | DNA polymerase III holoenzyme, <i>E. coli</i>                | Mouse                | IgM     |
| CRL-1713™ | 123-28                              | DNA polymerase III holoenzyme, <i>E. coli</i>                | Mouse                | IgG1    |
| CRL-1712™ | 68-1-2                              | DNA polymerase III holoenzyme, <i>E. coli</i>                | Mouse                | IgM     |
| HB-103™   | Genox3.53                           | DQw1 (DC1, HLADR)  | Mouse                | IgG1    |
| HB-10452™ | 4E8C12                              | <i>E. coli</i> 0157:H7 strain932                             | Mouse                | IgG2    |
| HB-10183™ | AA224                               | <i>E. ictaluri</i>   | Mouse                | IgM     |
| HB-8506™  | 579                                 | EGF receptor   | Mouse                | IgG     |
| HB-8507™  | 455                                 | EGF receptor   | Mouse                | IgG1    |
| HB-8508™  | 225                                 | EGF receptor   | Mouse                | IgG1    |
| HB-8509™  | 528                                 | EGF receptor   | Mouse                | IgG2a   |
| HB-9764™  | Mab108                              | EGF receptor, human  | Mouse                | IgG2a   |
| HB-8917™  | EIAV12E8.1                          | EIA and EIAV (p26 ) core antigen                             | Mouse                | IgG1    |
| HB-8331™  | S3D3[3D3b]                          | <i>Eimeria tenella</i> sporozoites                           | Mouse                | IgG2a   |
| HB-8332™  | S1E4[1E4]                           | <i>Eimeria tenella</i> sporozoites                           | Mouse                | IgG1    |
| HB-8337™  | 13.90.2                             | <i>Eimeria tenella</i> sporozoites and merozoites            | Mouse                | IgG1    |
| HB-8389™  | 2.03.7                              | <i>Eimeria tenella</i> sporozoites and merozoites            | Mouse                | IgG2a   |
| HB-11917™ | SM27-1045                           | EM10   | Mouse                | IgM     |
| HB-174™   | 14E5                                | Endothelium and macrophage, human                            | Mouse                | IgG1    |
| HB-172™   | 10B9                                | Endothelium, human   | Mouse                | IgG1    |
| CRL-2288™ | DALK20                              | Epidermis, human   | Mouse                | IgG1    |
| CRL-2291™ | DALK29                              | Epidermis, human   | Mouse                | IgG1    |
| HB-155™   | Ep-16                               | Epithelium, human  | Mouse                | IgM     |
| HB-168™   | 72A1                                | Epstein-Barr virus (EBV)                                     | Mouse                | IgG1    |
| HB-11601™ | Ab21.1                              | ErbB-2 protein, human  | Mouse                | IgG1    |
| HB-11602™ | Ab23.1                              | ErbB-2 protein, human  | Mouse                | IgG1    |
| CRL-2403™ | EN9F10                              | Ergonovine   | Mouse                | IgG2b   |
| HB-8209™  | 5F12AD3                             | Erythropoietin   | Mouse                | IgG1    |
| CRL-8164™ | BF-11                               | Erythropoietin, human  | Rat, Mouse           | IgG2a   |
| CRL-2514™ | CL2                                 | E-selectin (ELAM-1); CD62E, human                            | Mouse                | IgG2a   |
| CRL-2515™ | CL3                                 | E-selectin (ELAM-1); CD62E, human                            | Mouse                | IgG2a   |
| CRL-2516™ | CL37                                | E-selectin (ELAM-1); CD62E, human                            | Mouse                | IgG2a   |
| HB-11684™ | H18/7                               | E-selectin (ELAM-1, CD62E), human                            | Mouse                | IgG2a   |
| CRL-2485™ | 9-2-4                               | Exotoxin A   | Mouse                | IgG1    |
| CRL-2493™ | TC1                                 | Exotoxin A   | Mouse                | IgG1    |
| CRL-2494™ | TC31                                | Exotoxin A, <i>Pseudomonas aeruginosa</i>                    | Mouse                | IgM     |
| HB-192™   | F1-3G8-1                            | F1 antigen, <i>Yersinia pestis</i> (Bubonic plague bacillus) | Mouse                | IgA     |
| HB-10558™ | CAB117-12D10[12D10]                 | Factors VII and VIIa   | Mouse                | IgG1    |
| CRL-2418™ | IgG-IB7                             | Farnesyl transferase, alpha subunit                          | Mouse                | IgG1    |
| HB-11465™ | huFasM38                            | Fas antigen, human   | Mouse                | IgG1    |
| HB-11726™ | huFasM3                             | Fas antigen, human   | Mouse                | IgG1    |
| HB-197™   | 2.4G2                               | Fc gamma receptor (FcRII, CD32)                              | Rat, Mouse           | IgG2b   |
| HB-10500™ | T529-15D3-18-1A3-1B7[1B7,CTCC10752] | Fc gamma receptor III and P-glycoprotein, human              | Mouse                | IgG1    |
| CRL-2438™ | CT6-1D7                             | Fc receptor for IgG (Fc gamma RI)                            | Mouse                | IgG1    |
| HB-9469™  | 32.2                                | Fc RI (D64), human   | Mouse                | IgG1    |
| CRL-2434™ | 1G3                                 | FcRn heavy chain heterodimers                                | Mouse                | IgG1    |
| CRL-2435™ | 2G3                                 | FcRn heavy chain heterodimers                                | Mouse                | IgG1    |
| CRL-2436™ | 4C11                                | FcRn heavy chain heterodimers                                | Mouse                | IgG1    |
| HB-8049™  | 24IA2E2E10D5[24IA2]                 | FeLV p27   | Mouse                | IgG     |
| HB-91™    | P3NP/PFn                            | Fibronectin, human   | Mouse                | IgG1    |



| ATCC® No. | Name                                     | Antigenic Determinant                               | Species of Hybridoma | Isotype        |
|-----------|--|---|----------------------|----------------|
| CRL-1605™ | HFN36.3                                  | Fibronectin, human                                  | Mouse                | IgG1           |
| CRL-1606™ | HFN7.1                                   | Fibronectin, human                                  | Mouse                | IgG1           |
| HB-11124™ | alphaM346C7C1 [aM346C7C1, anti M346C7C1] | Fimbriae (2134P), <i>Escherichia coli</i>           | Mouse                | IgG1           |
| HB-112™   | D1-4G2-4-15                              | Flavivirus group antigen                            | Mouse                | IgG2a and IgG1 |
| TIB-121™  | M1/22.25.8.HL                            | Forssman antigen                                    | Rat, Mouse           | IgM            |
| TIB-123™  | M1/87.27.7.HLK                           | Forssman antigen                                    | Rat, Mouse           | IgM            |
| HB-10830™ | FRAN4                                    | <i>Francisella tularensis</i> Lipopolysaccharide    | Mouse                | IgG1           |
| CRL-2688™ | FSHR-18                                  | FSH receptor, extracellular domain, human           | Mouse                | IgG1           |
| CRL-2402™ | FB8H3[Mab8H3]                            | Fumonisin B1 Mycotoxin                              | Mouse                | IgG1           |
| CRL-2287™ | 807.15                                   | G1 protein of LaCrosse Virus.                       | Mouse                | IgG2b          |
| CRL-2290™ | 807.33                                   | G1 protein of LaCrosse Virus.                       | Mouse                | IgG2a          |
| HB-8873™  | FHCR-1-2624/FH6/FHOT-1-3019[FH6]         | Ganglioside   | Mouse                | IgM            |
| HB-8568™  | Mab126                                   | Ganglioside GD2                                     | Mouse                | IgM            |
| CRL-1814™ | 3G5                                      | Ganglioside, human                                  | Mouse                | IgM            |
| CRL-1520™ | A2B5 clone 105                           | Gangliosides  | Mouse                | IgM            |
| HB-9326™  | ME361-S2a[ME361S2a]                      | Gangliosides GD2 and GD3                            | Mouse                | IgG2a          |
| HB-8244™  | CLT152[SKI294/CLT152]                    | Gastrointestinal tract mucosa, human                | Mouse                | IgG1           |
| CRL-1959™ | 3C7.2                                    | <i>Giardia muris</i> Trophozoites                   | Mouse                | IgG1           |
| CRL-1960™ | 2B5.3                                    | <i>Giardia muris</i> Trophozoites                   | Mouse                | IgG2b          |
| CRL-1961™ | 1A3.1                                    | <i>Giardia muris</i> Trophozoites                   | Mouse                | IgG3           |
| CRL-2559™ | 32B11                                    | Glomalin  | Mouse                | IgM            |
| CRL-2173™ | FIGR                                     | Glucocorticoid receptor, mouse and rat              | Mouse                | IgG2b          |
| HB-184™   | GAD-1                                    | Glutamic acid decarboxylase (GAD)                   | Mouse                | IgG1           |
| HB-9596™  | A717                                     | Glycoalbumin  | Mouse                | IgG            |
| HB-8775™  | FHCR-1-2075/FH4[FH4]                     | Glycolipids, di- and trifucosylated type 2 chain    | Mouse                | IgG3           |
| HB-8159™  | 6A7M                                     | Glycophorin A type M                                | Mouse                | IgG1           |
| HB-8161™  | 8A2N                                     | Glycophorin A type M and N                          | Mouse                | IgG1           |
| HB-8162™  | 10F7MN                                   | Glycophorin A type N                                | Mouse                | IgG1           |
| HB-8473™  | NN-4                                     | Glycophorin A type N, human                         | Mouse                | IgG2a          |
| HB-8474™  | NN-3                                     | Glycophorin A type N, human                         | Mouse                | IgM            |
| HB-8476™  | NN-5                                     | Glycophorin A type N, human                         | Mouse                | IgG1           |
| TIB-106™  | 30-C7                                    | Glycoprotein  | Rat, Mouse           | IgG2a          |
| CRL-2698™ | 5E10[PTA-865]                            | Glycoprotein (5E10)                                 | Mouse                | IgG1           |
| CRL-2733™ | F19                                      | Glycoprotein (gp120/95)                             | Mouse                | IgG1           |
| HB-8934™  | 13-5-9-6-2                               | Glycoprotein (HN) parainfluenza virus type 3, human | Mouse                | IgG2a          |
| HB-9255™  | S5                                       | Glycoprotein gp120                                  | Mouse                | IgG1           |
| HB-8247™  | HT29/26[SKI294/HT29/26]                  | Glycoprotein gp29                                   | Mouse                | IgG2a          |
| HB-9459™  | CC49[CC-49,CC49]                         | Glycoprotein TAG-72, human                          | Mouse                | IgG1           |
| HB-8181™  | 52-S                                     | Glycoprotein, HSV-1                                 | Mouse                | IgG2a          |
| HB-8182™  | 53-S                                     | Glycoprotein, HSV-1                                 | Mouse                | IgG2a          |
| HB-8935™  | 9-4-3                                    | Glycoprotein, human                                 | Mouse                | IgG1           |
| HB-8441™  | AL1-27[A127]                             | Glycoprotein, human (M-11 antigen system)           | Mouse                | IgG2a          |
| HB-8445™  | R24                                      | Glycoprotein, human (M-18 antigen system)           | Mouse                | IgG3           |
| HB-8448™  | L230[L2-30]                              | Glycoprotein, human (M-23 antigen system)           | Mouse                | IgG1           |
| CRL-8034™ | B3/25                                    | Glycoprotein, human, hematopoietic cells            | Mouse                | IgG1           |
| TIB-198™  | PI153/3                                  | Glycoprotein, human, neuroectoderm                  | Mouse                | IgM            |
| CRL-2282™ | 807.31                                   | Glycoprotein, LaCrosse Virus                        | Mouse                | IgG1           |
| HB-8086™  | 132C4A/4                                 | Glycoprotein, <i>Schistosoma mansoni</i>            | Mouse                | IgG1           |

| ATCC® No. | Name                      | Antigenic Determinant                    | Species of Hybridoma | Isotype     |
|-----------|---------------------------|--|----------------------|-------------|
| HB-8087™  | 129A3/1                   | Glycoprotein, <i>Schistosoma mansoni</i> | Mouse                | IgA         |
| HB-8088™  | 130C3/2B/8                | Glycoprotein, <i>Schistosoma mansoni</i> | Mouse                | IgG1        |
| CRL-2464™ | M1.4                      | Glycoprotein, ZP1, mouse                 | Rat, Mouse           | IgG2a       |
| CRL-2463™ | IE-3                      | Glycoprotein, ZP2, mouse                 | Rat, Mouse           | IgG2a       |
| CRL-2462™ | IE-10                     | Glycoprotein, ZP3, mouse                 | Rat, Mouse           | IgG2a       |
| HB-8311™  | 4C[SKI3004C,mAb4C,moAb4C] | Glycoproteins, Leu200                    | Mouse                | IgG2a       |
| HB-9306™  | Y1328-18                  | Glycosphingolipid                        | Mouse                | IgG3        |
| TIB-189™  | 1B2-1B7                   | Glycosphingolipid                        | Mouse                | IgM         |
| TIB-182™  | BE2                       | Glycosphingolipid type II chain H        | Mouse                | IgM         |
| HB-9568™  | BVD2-23B6.4               | GM-CSF, human                            | Rat, Mouse           | IgG2a       |
| HB-9569™  | BVD2-21C11.3              | GM-CSF, human                            | Rat, Mouse           | IgG2a       |
| CRL-1928™ | 4A6                       | Golgi vesicular transport protein        | Mouse                | IgM         |
| CRL-1869™ | 6F4C5                     | Golgi complex (GCI), rat                 | Mouse                | IgG1        |
| HB-9094™  | USASK/DSIL-LHRH-A1        | Gonadotropin releasing hormone (LHRH)    | Mouse                | IgG1        |
| CRL-2700™ | I1-Hybridoma              | G-protein                                | Mouse                | IgG2a       |
| HB-10596™ | HGH-B                     | Growth hormone (hGH), human              | Mouse                | IgG1        |
| TIB-126™  | M1/42.3.9.8.HLK           | H-2 (all haplotypes)                     | Rat, Mouse           | IgG2a       |
| HB-221™   | K204                      | H-2, mouse                               | Rat                  | IgG2a       |
| TIB-139™  | B8-24-3                   | H-2b                                     | Mouse                | IgG1        |
| CRL-1581™ | Sp2/0-Ag14                | H-2d                                     | Mouse                | IgG1        |
| HB-19™    | 28-11-5S                  | H-2Db                                    | Mouse                | IgM         |
| HB-36™    | 23A-5-21S                 | H-2Db                                    | Mouse                | IgM         |
| HB-102™   | 34-5-8S                   | H-2Dd                                    | Mouse                | IgG2a       |
| HB-75™    | 34-4-20S                  | H-2Dd                                    | Mouse                | IgG2a       |
| HB-76™    | 34-4-21S                  | H-2Dd                                    | Mouse                | IgM         |
| HB-87™    | 34-2-12S                  | H-2Dd                                    | Mouse                | IgG2a       |
| HB-24™    | 15-5-5S                   | H-2Dk                                    | Mouse                | IgG2a       |
| TIB-95™   | 11-4.1                    | H-2K k, q, p and r                       | Mouse                | IgG2a       |
| HB-158™   | AF6-88.5.3                | H-2Kb                                    | Mouse                | IgG2a       |
| HB-176™   | Y-3                       | H-2Kb                                    | Mouse                | IgG2b       |
| HB-11™    | 20-8-4S                   | H-2Kb, Db                                | Mouse                | IgG2a       |
| HB-51™    | 28-8-6S                   | H-2Kb, Db                                | Mouse                | IgG2a       |
| HB-41™    | 28-13-3S                  | H-2Kb, Db                                | Mouse                | IgM         |
| HB-159™   | SF1-1.1.10                | H-2Kd                                    | Mouse                | IgG2a       |
| HB-77™    | 31-3-4S                   | H-2Kd                                    | Mouse                | IgM         |
| HB-101™   | 34-7-23S                  | H-2Kd, Dd                                | Mouse                | IgM         |
| HB-79™    | 34-1-2S                   | H-2Kd, Dd                                | Mouse                | IgG2a       |
| HB-160™   | AF3-12.1.3                | H-2Kk                                    | Mouse                | IgG1        |
| HB-13™    | 15-3-1S                   | H-2Kk, Dk                                | Mouse                | IgG2a       |
| HB-14™    | 16-1-2N                   | H-2Kk, Dk                                | Mouse                | IgG2a       |
| HB-20™    | 3-83P                     | H-2Kk, Dk                                | Mouse                | IgG2a       |
| HB-50™    | 12-2-2S(clone5F11)        | H-2Kk, Dk                                | Mouse                | IgM         |
| HB-53™    | 15-1-5P                   | H-2Kk, Dk                                | Mouse                | IgG2b       |
| HB-16™    | 16-1-11N                  | H-2Kk, Dk                                | Mouse                | IgG2a       |
| HB-25™    | 16-3-1N                   | H-2Kk, Dk                                | Mouse                | IgG2a       |
| HB-5™     | 16-3-22S                  | H-2Kk, Dk                                | Mouse                | IgG2a       |
| CRL-2430™ | 10C7                      | HCMV, human                              | Mouse                | IgG1        |
| HB-8554™  | L-14[L-14-SCRF55.1]       | HCMV, human                              | Mouse                | IgG1        |
| TIB-127™  | M1/75.16.4.HLK            | Heat stable antigen, mouse               | Rat, Mouse           | IgG2c,IgG2c |
| HB-10179™ | E-8                       | Heavy chain, channel cat fish            | Mouse                | IgG1        |

| ATCC® No.  | Name                                       | Antigenic Determinant                     | Species of Hybridoma | Isotype |
|------------|--|---|----------------------|---------|
| HB-60™     | C3-124                                     | Heavy chain, human gamma                  | Mouse                | IgG2b   |
| HB-43™     | 1410KG7                                    | Heavy chain, human, gamma                 | Mouse                | IgG1    |
| CRL-2826™  | Aw3.18.14                                  | Hen egg lysozyme (HEL)                    | Mouse                | IgG1    |
| CRL-8017™  | H25B10                                     | Hepatitis B virus surface antigen (HBsAg) | Mouse                | IgG1    |
| CRL-8017A™ | H25B10                                     | Hepatitis B virus surface antigen (HBsAg) | Mouse                | IgG1    |
| CRL-8018™  | H21F8-1                                    | Hepatitis B virus surface antigen (HBsAg) | Mouse                | IgM     |
| HB-11894™  | 1A3.3.13                                   | Hepatocyte growth factor(HGF) receptor    | Mouse                | IgG1    |
| HB-11895™  | 5D5.11.6[5D5]                              | Hepatocyte growth factor(HGF) receptor    | Mouse                | IgG1    |
| CRL-10463™ | A-HER2[4D5,NB9644P28]                      | HER2 receptor                             | Mouse                | IgG1    |
| HB-9907™   | alpha BL5C2.870005 [870005, aBL5C2.870005] | Herpes virus 1 (BHV-1), bovine            | Bovine, Mouse        | IgG1    |
| HB-9908™   | alpha BL5C2.870009 [870009, aBL5C2.870009] | Herpes virus 1 (BHV-1), bovine            | Bovine, Mouse        | IgG1    |
| HB-9909™   | alpha BL5C2.870016 [870016,aBL5C2.870016]  | Herpes virus 1 (BHV-1), bovine            | Bovine, Mouse        | IgG1    |
| CRL-1853™  | 2H6-C2                                     | Herpes virus 1 (BHV-1), bovine            | Mouse                | IgG2b   |
| CRL-1852™  | 1B8-F11                                    | Herpes virus 1 (BHV-1), bovine            | Mouse                | IgG1    |
| CRL-2440™  | 3A5  | HFE                                       | Mouse                | IgM     |
| CRL-2441™  | 1C3  | HFE                                       | Mouse                |         |
| CRL-2442™  | 2A11                                       | HFE                                       | Mouse                |         |
| CRL-2443™  | 2B7  | HFE                                       | Mouse                | IgG1    |
| CRL-2444™  | 2A5  | HFE                                       | Mouse                | IgM     |
| CRL-2153™  | 55-36                                      | HIV-1 gp119                               | Mouse                | IgG1    |
| HB-10893™  | 559/64-D100,10,1[559/64-D]                 | HIV-1 gp120                               | Human, Mouse         | IgG1    |
| HB-10894™  | 558-D100,10,1[558-D]                       | HIV-1 gp120                               | Human, Mouse         | IgG1    |
| HB-10895™  | 448-D100,10,1[448-D]                       | HIV-1 gp120                               | Human, Mouse         | IgG1    |
| CRL-2155™  | 55-2                                       | HIV-1 gp120                               | Mouse                | IgG1    |
| CRL-2156™  | 55-6                                       | HIV-1 gp120                               | Mouse                | IgG2a   |
| CRL-2178™  | 46-4                                       | HIV-1 gp120                               | Mouse                | IgG1    |
| CRL-2184™  | 46-5                                       | HIV-1 gp120                               | Mouse                | IgG1    |
| CRL-2185™  | 55-83                                      | HIV-1 gp120                               | Mouse                | IgG2a   |
| CRL-2186™  | 46-2                                       | HIV-1 gp120                               | Mouse                | IgG1    |
| CRL-2395™  | 803-15.6                                   | HIV-1 gp120                               | Mouse                | IgG1    |
| HB-109™    | G2b.2                                      | HLA DC1(HLA DR)                           | Mouse                | IgG2b   |
| HB-110™    | G2a.5                                      | HLA DC1(HLA DR)                           | Mouse                | IgG2a   |
| HB-296™    | 171-4                                      | HLA heavy chain                           | Mouse                | IgG2a   |
| HB-116™    | MB40.5                                     | HLA-A, B, C                               | Mouse                | IgG1    |
| HB-118™    | PA2.6                                      | HLA-A, B, C                               | Mouse                | IgG1    |
| HB-120™    | BB7.5                                      | HLA-A, B, C                               | Mouse                | IgG1    |
| HB-94™     | BB7.7                                      | HLA-A, B, C                               | Mouse                | IgG2b   |
| HB-95™     | W6/32                                      | HLA-A, B, C                               | Mouse                | IgG2a   |
| HB-164™    | A11.1M                                     | HLA-A11/A24                               | Mouse                | IgG3    |
| HB-166™    | 2.28M1[A2,28M1]                            | HLA-A2/A28                                | Mouse                | IgM     |
| HB-117™    | PA2.1                                      | HLA-A2/Aw69                               | Mouse                | IgG1    |
| HB-82™     | BB7.2                                      | HLA-A2/Aw70                               | Mouse                | IgG2b   |
| HB-54™     | MA2.1                                      | HLA-A2/B17                                | Mouse                | IgG1    |
| HB-122™    | GAPA3                                      | HLA-A3                                    | Mouse                | IgG2a   |
| HB-157™    | B27M1                                      | HLA-B27/B7                                | Mouse                | IgG2a   |
| HB-165™    | B27M2                                      | HLA-B27/Bw47                              | Mouse                | IgM     |
| HB-178™    | 4D12                                       | HLA-B5                                    | Mouse                | IgG1    |
| HB-56™     | BB7.1                                      | HLA-B7                                    | Mouse                | IgG1    |

| ATCC® No. | Name                   | Antigenic Determinant                | Species of Hybridoma | Isotype |
|-----------|------------------------|--------------------------------------|----------------------|---------|
| HB-105™   | MB40.3                 | HLA-B7,B40                           | Mouse                | IgG1    |
| HB-59™    | MB40.2                 | HLA-B7,B41                           | Mouse                | IgG1    |
| HB-115™   | BB7.6                  | HLA-B7,B42                           | Mouse                | IgG1    |
| HB-119™   | ME1                    | HLA-B7,Bw22,B27                      | Mouse                | IgG1    |
| HB-152™   | SFR8-B6                | HLA-Bw6                              | Rat, Mouse           | IgG2b   |
| HB-144™   | IVD12                  | HLA-DQ                               | Mouse                | IgG1    |
| HB-104™   | Antibody2.06           | HLA-DR                               | Mouse                | IgG1    |
| HB-298™   | LB3.1                  | HLA-DR alpha chain                   | Mouse                | IgG2a   |
| HB-145™   | IVA12                  | HLA-DR,DP,DQ                         | Mouse                | IgG1    |
| HB-180™   | 9.3F10                 | HLA-DR,DQ                            | Mouse                | IgG2a   |
| HB-151™   | SFR3-DR5               | HLA-DR5                              | Rat, Mouse           | IgG2b   |
| HB-12000™ | B505                   | hLH beta core fragment, human        | Mouse                | IgG1    |
| CRL-1811™ | A9                     | HMG-CoA reductase                    | Mouse                | IgG1    |
| CRL-1653™ | F32VIIIC4              | Hog renin                            | Mouse                | IgG1    |
| HB-8183™  | 58-S                   | HSV-1 (ICP4)                         | Mouse                | IgG2a   |
| HB-8180™  | 39-S                   | HSV-1 (ICP8)                         | Mouse                | IgG2a   |
| HB-8975™  | MH-SVM33C9             | HTLV-III gp17                        | Mouse                | IgG1    |
| HB-8870™  | MH-SVM23[SVM-23]       | HTLV-III gp24                        | Mouse                | IgG2    |
| HB-8872™  | MH-SVM26[SVM-26]       | HTLV-III gp25                        | Mouse                | IgG1    |
| HB-8871™  | MH-SVM25[SVM-25]       | HTLV-III gp41                        | Mouse                | IgG1    |
| HB-8116™  | HY3-11.27              | H-Y antigen, mammalian               | Mouse                | IgM     |
| HB-9070™  | 12/44                  | H-Y antigen                          | Mouse                | IgM     |
| HB-9071™  | 12/49                  | H-Y antigen                          | Mouse                | IgM     |
| HB-183™   | Y-3P                   | I-A                                  | Mouse                | IgG2a   |
| TIB-92™   | 10-3.6.2               | I-A of k, r, f and s                 | Mouse                | IgG2a   |
| TIB-93™   | 10-2.16                | I-A of k, r, f and s                 | Mouse                | IgG2b   |
| HB-171™   | L203                   | I-A, human                           | Mouse                | IgG1    |
| HB-96™    | L227                   | I-A, human                           | Mouse                | IgG1    |
| HB-55™    | L243                   | I-A, human                           | Mouse                | IgG2a   |
| CRL-1760™ | 2C4                    | I-A, rabbit                          | Mouse                | IgG2a   |
| HB-163™   | AF6-120.1.2            | I-Ab                                 | Mouse                | IgG2a   |
| HB-37™    | 25-5-16S               | I-Ab                                 | Mouse                | IgM     |
| HB-38™    | 25-9-3S                | I-Ab                                 | Mouse                | IgM     |
| HB-26™    | 25-9-17SII             | I-Ab and I-Ad                        | Mouse                | IgG2a   |
| TIB-154™  | BP107.2.2              | I-Ab and I-Ad                        | Mouse                | IgG3    |
| HB-35™    | 28-16-8S               | I-Ab, I-Ad                           | Mouse                | IgM     |
| TIB-120™  | M5/114.15.2            | I-Ab, I-Ad, I-Aq, I-Ed and I-Ek      | Rat, Mouse           | IgG2b   |
| TIB-229™  | B21-2                  | I-Ab,d                               | Rat, Mouse           | IgG2b   |
| HB-3™     | MK-D6                  | I-Ad                                 | Mouse                | IgG2a   |
| HB-85™    | 34-5-3S                | I-Ad                                 | Mouse                | IgG2a   |
| TIB-94™   | 11-5.2.1.9             | I-Ak                                 | Mouse                | IgG2b   |
| HB-42™    | 26-8-16S               | I-Ak                                 | Mouse                | IgM     |
| HB-15™    | 26-7-11S               | I-Ak; cytotoxic                      | Mouse                | IgM     |
| HB-4™     | MK-S4                  | Influenza virus A matrix (M) protein | Mouse                | IgG2b   |
| CRL-2518™ | CL18/6                 | ICAM-1, canine                       | Mouse                | IgG1    |
| HB-9580™  | R6.5.D6.E9.B2[R6-5-D6] | ICAM-1, human                        | Mouse                | IgG2a   |
| CRL-1878™ | YN1/1.7.4              | ICAM-1, mouse                        | Rat                  | IgG2b   |
| HB-233™   | BE29G1                 | ICAM-1; CD54, mouse                  | Rat, Mouse           | IgG2a   |
| HB-11911™ | 127H                   | ICAM-4, rat                          | Mouse                | IgG1    |
| HB-179™   | Y-17                   | I-E                                  | Mouse                | IgG2b   |

| ATCC® No. | Name                                      | Antigenic Determinant                   | Species of Hybridoma | Isotype |
|-----------|---|---|----------------------|---------|
| HB-32™    | 14-4-4S                                   | I-Ek                                    | Mouse                | IgG2a   |
| HB-6™     | 17-3-3S                                   | I-Ek                                    | Mouse                | IgG2a   |
| HB-200™   | CH-EB6                                    | IgA (IgA1, IgA2), human                 | Mouse                | IgG1    |
| TIB-149™  | Ig(5a)7.2(formerly 10-4-22)               | IgD, mouse                              | Mouse                | IgG2a   |
| HB-250™   | 11-26c                                    | IgD, mouse                              | Rat, Mouse           | IgG2a   |
| HB-121™   | E5BB3IIA2                                 | IgE, human                              | Mouse                | IgG2a   |
| HB-236™   | CIA-E-7.12                                | IgE, human, Beta-2                      | Mouse                | IgG1    |
| HB-235™   | CIA-E-4.15                                | IgE, human, Beta-3                      | Mouse                | IgG1    |
| CRL-1786™ | HP6058                                    | IgG (Fc), human                         | Mouse                | IgG1    |
| CRL-1753™ | HP6017                                    | IgG (Fc), human                         | Mouse                | IgG2a   |
| CRL-1754™ | HP6000                                    | IgG (Fc), human                         | Mouse                | IgG2b   |
| CRL-1757™ | HP6045                                    | IgG (Fd, F(ab')2, Fab), human           | Mouse                | IgG2a   |
| CRL-1755™ | HP6001                                    | IgG1 (Fc), human                        | Mouse                | IgG2b   |
| CRL-1788™ | HP6002                                    | IgG1 (Fc), human                        | Mouse                | IgG1    |
| CRL-1756™ | HP6003                                    | IgG1 (Fc), human                        | Mouse                | IgG1    |
| TIB-170™  | RG11/39.4                                 | IgG1 (Fc), rat                          | Mouse                | IgG2b   |
| HB-146™   | Ig(4a)10.9[previously designated 20-9.10] | IgG1, mouse                             | Mouse                | IgG2a   |
| CRL-1752™ | HP6014                                    | IgG2, human                             | Mouse                | IgG1    |
| HB-90™    | ED1-19-1-6-5                              | IgG2, mouse                             | Rat, Mouse           | IgG2a   |
| HB-92™    | 7D2-1.4.1.5                               | IgG2, mouse                             | Rat, Mouse           | IgG2b   |
| TIB-167™  | RG9/6.13HLK                               | IgG2a (Fab'), rat                       | Mouse                | IgG2b   |
| TIB-173™  | RG7/1.30                                  | IgG2a (Fc), rat                         | Mouse                | IgG2b   |
| TIB-174™  | RG7/11.1                                  | IgG2a (Fc), rat                         | Mouse                | IgG2b   |
| TIB-148™  | Ig(1a)8.3(formerly20-8.3)                 | IgG2a, mouse                            | Mouse                | IgG2a   |
| TIB-98™   | RDP45/20                                  | IgG2a, mouse                            | Mouse                | IgM     |
| CRL-1768™ | HP6050                                    | IgG3, human                             | Mouse                | IgG1    |
| CRL-1774™ | HP6047                                    | IgG3, human                             | Mouse                | IgG1    |
| HB-128™   | 2E.6                                      | IgG3, mouse                             | Rat, Mouse           | IgG1    |
| CRL-1789™ | HP6020                                    | IgG4 (Fab), human                       | Mouse                | IgG2a   |
| CRL-1775™ | HP6025                                    | IgG4 (Fc), human                        | Mouse                | IgG1    |
| CRL-1776™ | HP6023                                    | IgG4 (Fc), human                        | Mouse                | IgG3    |
| HB-199™   | AF6-122.2.5                               | Igh-5.3 (IgDb,e)                        | Mouse                | IgG1    |
| HB-161™   | AMS9.1.1.1                                | Igh-5.4 (IgDa)                          | Mouse                | IgG2b   |
| HB-201™   | AF4-73.3.1                                | Igh-5.5 (IgDe)                          | Mouse                | IgG2b   |
| TIB-96™   | Ig(5b)6.3[formerly11-6.3.1]               | Igh-5b                                  | Mouse                | IgG1    |
| HB-162™   | AF6-78.25.4                               | Igh-6.6 (IgMb)                          | Mouse                | IgG1    |
| HB-100™   | Bet1                                      | IgM (Igh-6.5 allotype), mouse           | Rat, Mouse           | IgG1    |
| TIB-129™  | 331.12                                    | IgM (mu heavy chain), mouse             | Rat, Mouse           | IgG2b   |
| HB-8371™  | 5C9                                       | IgM (mu heavy chain), pig               | Mouse                | IgG1    |
| HB-232™   | LP4.4                                     | IgM lambda, human                       | Mouse                | IgG2b   |
| CRL-1894™ | IL-A30                                    | IgM, bovine                             | Mouse                | IgG1    |
| HB-138™   | M-2E6                                     | IgM, human                              | Mouse                | IgG1    |
| HB-88™    | Bet-2                                     | IgM, mouse                              | Rat, Mouse           | IgG1    |
| CRL-1839™ | NRbM                                      | IgM, rabbit                             | Mouse                | IgG1    |
| CRL-2484™ | DS1                                       | IgMa, mouse                             | Mouse                | IgG1    |
| HB-10135™ | 7A9                                       | IL-1 activated endothelial cells, human | Mouse                | IgG1    |
| CRL-2052™ | SA22                                      | IL-1 beta, bovine                       | Mouse                | IgG1    |
| HB-10219™ | ILB1-H6[ILB1-H6A1B]                       | IL-1 beta, human                        | Mouse                | IgG1    |
| HB-10221™ | ILB1-H34[ILB1-H34A3]                      | IL-1 beta, human                        | Mouse                | IgG1    |
| HB-10222™ | ILB1-H67                                  | IL-1 beta, human                        | Mouse                | IgG2b   |

| ATCC® No.  | Name   | Antigenic Determinant                    | Species of Hybridoma | Isotype |
|------------|--|--|----------------------|---------|
| HB-10487™  | JES3-19F1.1.1  | IL-10, CSIF, human                       | Rat, Mouse           | IgG2a   |
| CRL-2358™  | R2-10F6[R2-10F6.3C10.3F9]  | IL-12 p40, mouse                         | Rat, Mouse           | IgG2b   |
| CRL-2360™  | R1-5D9[R1-5D9.1A8]   | IL-12 p40, mouse                         | Rat, Mouse           | IgG2a   |
| CRL-2382™  | 20C2[4H12:20C2.G6.C9]  | IL-12 p75, human                         | Rat, Mouse           | IgG1    |
| CRL-2357™  | R2-9A5[R2-9A5.2A2.1A10]  | IL-12 p75, mouse                         | Rat, Mouse           | IgG2b   |
| CRL-2359™  | HIL12R1.2B10[HIL12R1.2B10.C5.D11]                                | IL-12 receptor beta 1, human             | Rat, Mouse           | IgG2a   |
| CRL-1698™  | 7D4  | IL-2 receptor (CD25), mouse              | Rat, Mouse           | IgM     |
| TIB-222™   | PC615.3[PC61,PC61.5.3]   | IL-2 receptor (CD25), mouse              | Rat, Mouse           | IgG1    |
| HB-8555™   | 2A3A1H   | IL-2 receptor, human                     | Mouse                | IgG1    |
| HB-10968™  | S4B6-1   | IL-2, mouse                              | Rat, Mouse           | IgG2a   |
| HB-8784™   | 7G7B6  | IL-2; CD25, human                        | Mouse                | IgG2a   |
| CRL-2016™  | Sp2/mL-6   | IL-6, mouse                              | Mouse                |         |
| HB-11553™  | A5.12.14[5.12.14]  | IL-8, human                              | Mouse                | IgG2a   |
| HB-11722™  | 6G4.2.5  | IL-8, rabbit                             | Mouse                | IgG2a   |
| CRL-12444™ | CHO DP-12 clone#1933 [CHO DP-12, clone#1933 all8.92 NB 28605/12] | IL-8, Human                              | Hamster              | IgG1    |
| HB-9437™   | B69  | Infectious Bursal Disease (IBD) virus    | Mouse                | IgG2a   |
| HB-9746™   | B29  | Infectious Bursal Disease (IBD) virus    | Mouse                | IgG1    |
| CCL-189™   | HK-PEG-1[formerlyPEG1-6]   | Influenza                                | Mouse                | IgG3    |
| HB-65™     | H16-L10-4R5  | Influenza virus A nucleoprotein          | Mouse                | IgG2a   |
| HB-67™     | 46/4   | Influenza virus A nucleoprotein          | Mouse                | IgG1    |
| HB-64™     | M2-1C6-4R3   | Influenza virus Amatrix (M) protein      | Mouse                | IgG1    |
| HB-66™     | 73/1   | Influenza virus hemagglutinin            | Mouse                | IgG2a   |
| HB-123™    | CC9C10   | Insulin                                  | Mouse                | IgG1    |
| HB-124™    | DB9G8  | Insulin                                  | Mouse                | IgG2a   |
| HB-126™    | CG7C7  | Insulin                                  | Mouse                | IgG1    |
| HB-127™    | CE9H9  | Insulin                                  | Mouse                | IgG1    |
| HB-133™    | BE3F9  | Insulin                                  | Mouse                | IgG2a   |
| HB-125™    | AE9D6  | Insulin (residues A8-10), human          | Mouse                | IgG1    |
| HB-175™    | anti-IR-1 [αIR-1, alpha R-1]                                     | Insulin receptor, human                  | Mouse                | IgG1    |
| HB-224™    | N418   | Integrin (CD11c), Leukocyte, mouse       | Hamster, mouse       | IgG     |
| CRL-2179™  | KMI6   | Integrin (CD29), mouse                   | Rat, Mouse           | IgG2a   |
| HB-242™    | AP-3   | Integrin (platelet G PIIIA), beta 3      | Mouse                | IgG1    |
| HB-261™    | FW3-218-1[218]   | Integrin (VLA-4,CD49d), sheep            | Mouse                | IgG2b   |
| HB-294™    | DATK32   | Integrin alpha 4, beta 7, mouse and rat  | Rat, Mouse           | IgG2a   |
| HB-12592™  | 226H   | Integrin alpha D beta 2                  | Mouse                | IgG1    |
| HB-12593™  | 236L   | Integrin alpha D beta 3                  | Mouse                | IgG1    |
| HB-9771™   | B6H12.2  | Integrin associated protein (CD47) (VnR) | Mouse                | IgG1    |
| HB-289™    | FW4-101-1-1  | Integrin (CD29), sheep                   | Mouse                | IgG1    |
| CRL-2860™  | CBRN1/6  | Integrin, alpha and beta                 | Mouse                | IgG     |
| HB-11029™  | 10C4.1.3   | Integrin, alpha v, beta 3, human         | Mouse                | IgG1    |
| HB-293™    | FIB504.64  | Integrin, mouse and rat beta 7           | Rat, Mouse           | IgG2a   |
| HB-295™    | FIB21  | Integrin, mouse and rat beta 8           | Rat, Mouse           | IgG2a   |
| CRL-1911™  | PS/2   | Integrin-like cellular adhesion molecule | Rat, Mouse           | IgG2b   |
| HB-8700™   | gamma3-11.1  | Interferon gamma, human                  | Mouse                | IgG1    |
| HB-8291™   | IFGCP-F1BA10   | Interferon gamma, human                  | Mouse                | IgG1    |
| CRL-2013™  | GR-96  | Interferon gamma, mouse                  | Rat, Mouse           | IgA     |
| CRL-2024™  | GR-20  | Interferon gamma, mouse                  | Rat, Mouse           | IgG2a   |
| HB-170™    | R4-6A2   | Interferon gamma, mouse                  | Rat, Mouse           | IgG1    |

| ATCC® No. | Name  | Antigenic Determinant   | Species of Hybridoma | Isotype |
|-----------|---|---|----------------------|---------|
| HB-11494™ | 10H2.12.1   | Interleukin 8 receptor typeB (IL-8R-B, CDw128)                  | Mouse                | IgG2a   |
| HB-11495™ | 4D1.5.7   | Interleukin 8 receptor typeB (IL-8R-B, CDw128)                  | Mouse                | IgG2a   |
| TIB-131™  | a Intermediate filament [alpha intermediate filament, anti intermediate filament] | Intermediate filaments  | Mouse                | IgG1    |
| CRL-1818™ | 4D9D4   | Invected and engrailed proteins, <i>Drosophila melanogaster</i> | Mouse                | IgG1    |
| HB-8297™  | J5-1  | J5 endotoxin core <i>Escherichia coli</i>                       | Mouse                | IgM     |
| HB-8298™  | J5-2  | J5 endotoxin core <i>Escherichia coli</i>                       | Mouse                | IgG1    |
| HB-8178™  | 2BD4E4K99   | K99 pilus, <i>Escherichia coli</i>                              | Mouse                | IgG1    |
| CRL-1758™ | HP6053  | Kappa light chain, human  | Mouse                | IgG1    |
| HB-45™    | 141PF11   | Kappa light chain, human  | Mouse                | IgG1    |
| HB-61™    | TB28-2  | Kappa light chain, human  | Mouse                | IgG1    |
| HB-58™    | 187.1   | Kappa light chain, mouse  | Rat, Mouse           | IgG1    |
| TIB-207™  | GK1.5   | L3T4 antigen, CD4, mouse  | Rat, Mouse           | IgG2b   |
| HB-8609™  | La1[anti-La/SSB]  | La/SSB (autoimmune RNA protein), bovine                         | Mouse                | IgG     |
| TIB-157™  | LS-136  | Lambda 1 light chain, mouse                                     | Mouse                | IgG1    |
| CRL-1763™ | HP6054  | Lambda light chain, human                                       | Mouse                | IgG2a   |
| HB-8210™  | 2AB1-IA10   | Laminin (basement membrane glycoprotein)                        | Rat, Mouse           | IgG2b   |
| TIB-115™  | PAb100(formerlyclone7)  | Large T antigen( SV40)  | Mouse                | IgG1    |
| TIB-117™  | PAb101(formerlyclone412)  | Large T antigen( SV40)  | Mouse                | IgG2a   |
| CRL-2574™ | 17-G4   | LBP, human  | Mouse                | IgG2a   |
| HB-11490™ | Mab1E8  | LBP, human  | Mouse                | IgG1    |
| HB-11491™ | Mab2B5  | LBP, human  | Mouse                | IgG1    |
| HB-27™    | 28-14-8S  | Ld, Dq ,Lq and Lb; cytotoxic                                    | Mouse                | IgG2a   |
| HB-31™    | 30-5-7S   | Ld, Dq ,Lq and Lb; cytotoxic                                    | Mouse                | IgG2a   |
| CRL-1691™ | C7  | LDL receptor, bovine  | Mouse                | IgG2b   |
| CRL-1703™ | 9D9   | LDL receptor, bovine  | Mouse                | IgG1    |
| CRL-1898™ | IgG-4A4   | LDL receptor, human   | Mouse                | IgG1    |
| CRL-2248™ | B1B6[464B1B6]   | LDL receptor, human   | Mouse                | IgG1    |
| CRL-2249™ | B1B3[464B1B3]   | LDL receptor, human   | Mouse                | IgG1    |
| CRL-2841™ | 22D1  | Lectin, SIGN-R1   | Hamster, mouse       | IgG     |
| HB-8472™  | LP3IIIG2  | <i>Legionella pneumophila</i>                                   | Mouse                | IgG2a   |
| CRL-1765™ | Lp1MAB1   | <i>Legionella pneumophila</i> serogroup 1                       | Mouse                | IgG3    |
| CRL-1767™ | Lp1MAB3   | <i>Legionella pneumophila</i> serogroup 2                       | Mouse                | IgG2b   |
| CRL-1770™ | Lp1MAB2   | <i>Legionella pneumophila</i> serogroup 3                       | Mouse                | IgG2b   |
| HB-169™   | TM1   | Leu-5   | Mouse                | IgM     |
| CRL-1945™ | 7-34-1  | Leucocyte antigen (SLA) a,c and d, pig                          | Mouse                | IgG2a   |
| HB-8156™  | WFL4F12.3[4F12]   | LEW RT1.A and HLA-A2, A11 and A29                               | Rat, Mouse           | IgM     |
| HB-8157™  | WFL3C6.1[3C6]   | LEW RT1.A and HLA-A2, A11 and A29                               | Rat, Mouse           | IgM     |
| CRL-1667™ | CA3-F4  | Lewis a (human blood group antigen)                             | Mouse                | IgG2a   |
| CRL-1670™ | BC9-E5  | Lewis a (human blood group antigen)                             | Mouse                | IgG1    |
| CRL-1716™ | CF4-C4  | Lewis a (human blood group antigen)                             | Mouse                | IgG1    |
| HB-8322™  | 151-5-G2-12[CO-512,CO512]   | Lewis a and Lewis b blood group antigens, human                 | Mouse                | IgG3    |
| HB-8323™  | 151-5-G3-5[CO-513,CO513]  | Lewis a and Lewis b blood group antigens, human                 | Mouse                | IgG3    |
| HB-8324™  | 151-6-A7-9[CO-514,CO514]  | Lewis a blood group antigen, human                              | Mouse                | IgG3    |
| HB-8325™  | 143-2-A6-11[CO-431,CO431]   | Lewis b blood group antigen, human                              | Mouse                | IgM     |
| HB-8326™  | 130-3-F7-5[CO-301,CO301]  | Lewis b blood group antigen, human                              | Mouse                | IgG1    |
| TIB-217™  | M17/4.4.11.9(new clone of M17/4.2)  | LFA-1 (CD11a) alpha   | Rat, Mouse           | IgG2a   |
| HB-202™   | TS1/22.1.1.13   | LFA-1 alpha subunit (CD11a)                                     | Mouse                | IgG1    |
| HB-244™   | TS2/4.1.1   | LFA-1 alpha subunit (CD11a)                                     | Mouse                | IgG1    |

| ATCC® No. | Name                                 | Antigenic Determinant  | Species of Hybridoma | Isotype |
|-----------|--------------------------------------|--|----------------------|---------|
| TIB-218™  | M18/2.a.12.7(new clone of M18/2.a.8) | LFA-1 and Mac-1 (CD18) beta subunit                            | Rat, Mouse           | IgG2a   |
| HB-203™   | TS1/18.1.2.11                        | LFA-1 beta CD18  | Mouse                | IgG1    |
| TIB-237™  | M17/5.2                              | LFA-1, CD11a, mouse  | Rat, Mouse           | IgG2b   |
| TIB-213™  | FD441.8                              | LFA-1, mouse   | Rat, Mouse           | IgG2b   |
| HB-205™   | TS2/9.1.4.3[TS2/9.1.1.4.3]           | LFA-3 CD58   | Mouse                | IgG1    |
| CRL-2685™ | LHR-29                               | LH/hCG receptor extracellular domain, human                    | Mouse                | IgG1    |
| CRL-2686™ | LHR-74                               | LH/hCG receptor extracellular domain, human                    | Mouse                | IgG1    |
| CRL-2687™ | LHR-1055                             | LH/hCG receptor extracellular domain, human                    | Mouse                | IgG1    |
| TIB-216™  | MAR18.5                              | Light chain (RI-1a and RI-1b) kappa, rat                       | Mouse                | IgG2a   |
| TIB-172™  | RG7/7.6HL                            | Light chain [kappa 1b(LEW)], rat                               | Mouse                | IgG2a   |
| TIB-169™  | RG7/9.1HLK                           | Light chain kappa, rat   | Mouse                | IgG2b   |
| HB-8669™  | C5[1F10]                             | Lipid A of <i>E. coli</i> 0111:B4 endotoxin                    |                      | IgM     |
| HB-9081™  | XMMEN-OE5[AAB-647,AAB647]            | Lipopolysaccharide endotoxin, Gram negative bacteria           | Mouse                | IgM     |
| CRL-2197™ | IgG-6A6                              | Lipoprotein (VLDL) receptor                                    | Mouse                | IgG1    |
| CRL-1783™ | MA1-6                                | Lipoprotein H2, <i>Pseudomonas aeruginosa</i>                  | Mouse                | IgG1    |
| HB-195™   | TS2/18.1.1                           | ILFA-2 CD2   | Mouse                | IgG1    |
| HB-227™   | R1-2                                 | LPAM-1 (lymphocyte Peyer's patch HEV adhesion molecule), VLA-4 | Rat, Mouse           | IgG2b   |
| CRL-1936™ | IgG-11H4                             | LRP  | Mouse                | IgG1    |
| CRL-1938™ | IgG-5D7[antiLRP515]                  | LRP, rabbit  | Mouse                | IgG1    |
| CRL-1937™ | IgG-1B3[antiLRP85]                   | LRP, rabbit  | Mouse                | IgG1    |
| HB-263™   | DU1-29                               | L-selectin (CD62L), sheep and bovine                           | Mouse                | IgG1    |
| HB-300™   | DREG56                               | L-selectin (CD62L, LECAM ,LAM-1, Leu8), human                  | Mouse                | IgG1    |
| HB-302™   | DREG200                              | L-selectin (CD62L, LECAM ,LAM-1, Leu8), human                  | Mouse                | IgG1    |
| HB-8301™  | 703D4                                | Lung cancer, human   | Mouse                | IgG2a   |
| CRL-1970™ | 143-4-2                              | Ly6.2C, mouse  | Mouse                | IgG1    |
| TIB-165™  | 10-1.D.2                             | Lyb2.1 mouse B cell (Blymphocyte) antigen                      | Mouse                | IgG2b   |
| TIB-163™  | Cy34.1.2                             | Lyb8.2 (mouse B cell antigen)                                  | Mouse                | IgG1    |
| HB-132™   | MEL-14[MEL-14.D54]                   | Lymphocyte surface receptor for endothelium, mouse and rat     | Rat, Mouse           | IgG2a   |
| HB-254™   | GL7                                  | Lymphocytes, mouse   | Rat, Mouse           | IgM     |
| HB-9401™  | Hybridoma 231                        | Lymphoma cells, canine   | Mouse                | IgG2a   |
| HB-9402™  | Hybridoma 234                        | Lymphoma cells, canine   | Mouse                | IgG1    |
| HB-9403™  | Hybridoma 234s.2a                    | Lymphoma cells, canine   | Mouse                | IgG2a   |
| CRL-1823™ | K6H6/B5                              | Lymphoma nodular   | Human, Mouse         |         |
| HB-97™    | LS102.9                              | Lymphoma, mouse  | Mouse                |         |
| HB-98™    | LK35.2                               | Lymphoma, mouse  | Mouse                |         |
| HB-99™    | LB27.4(LB15.13)                      | Lymphoma, mouse  | Mouse                |         |
| TIB-104™  | 53-7.313                             | Lyt-1 (all alleles)  | Rat, Mouse           | IgG2a   |
| TIB-105™  | 53-6.72                              | Lyt-2 (all alleles)  | Rat, Mouse           | IgG2a   |
| TIB-211™  | 3.155                                | Lyt-2, mouse   | Rat, Mouse           | IgM     |
| HB-129™   | 116-13.1                             | Lyt-2.1  | Mouse                | IgG2a   |
| HB-130™   | 41-3.48                              | Lyt-2.2  | Mouse                | IgM     |
| CRL-1971™ | 83-12-5                              | Lyt2.2 (CD8 alpha 2.2), mouse                                  | Mouse                | IgM     |
| TIB-150™  | HO-2.2                               | Lyt-2.2, mouse   | Mouse                | IgM     |
| TIB-210™  | 2.43                                 | Lyt-2.2, mouse   | Rat, Mouse           | IgG2b   |
| HB-10714™ | MAC2-48                              | Mac  | Mouse                | IgG1    |
| HB-204™   | LM2/1.6.11                           | Mac-1 antigen (CD11b), human                                   | Mouse                | IgG1    |
| TIB-128™  | M1/70.15.11.5.HL                     | Mac-1, alpha chain, mouse                                      | Rat, Mouse           | IgG2b   |
| CRL-2861™ | CBRM1/10                             | Mac-1, C-terminal epitope, human                               | Mouse                | IgG1    |



| ATCC® No. | Name                                    | Antigenic Determinant                   | Species of Hybridoma | Isotype     |
|-----------|---|---|----------------------|-------------|
| CRL-2862™ | CBRM1/23                                | Mac-1, C-terminal epitope, human        | Mouse                | IgG2a       |
| TIB-166™  | M3/38.1.2.8HL.2                         | Mac-2, mouse                            | Rat, Mouse           | IgG2a       |
| TIB-168™  | M3/84.6.34                              | Mac-3, mouse                            | Rat, Mouse           | IgG1        |
| HB-142™   | 74-22-15                                | Macrophage and granulocyte, pig         | Mouse                | IgG1        |
| HB-142.1™ | 74-22-15A                               | Macrophage and granulocyte, pig         | Mouse                | IgG2b       |
| HB-153™   | 76-5-28                                 | Macrophage and granulocyte, pig         | Mouse                | IgM         |
| HB-141™   | 76-6-7                                  | Macrophage and granulocyte, pig         | Mouse                | IgM         |
| HB-198™   | F4/80                                   | Macrophage, mouse                       | Rat, Mouse           | IgG2b       |
| HB-292™   | MECA-89                                 | MAdCAM-1, mouse and rat                 | Rat, Mouse           | IgG2a       |
| HB-8573™  | Ch13                                    | Malignant cells, human                  | Human, Mouse         | IgM         |
| HB-8575™  | Gr431                                   | Malignant cells, human                  | Human, Mouse         | IgM         |
| HB-8577™  | Te39                                    | Malignant cells, human                  | Human, Mouse         | IgM         |
| HB-8654™  | 3B18                                    | Mammary tumor cell cytoplasmic, human   | Mouse                | IgG1        |
| HB-8106™  | B6.2                                    | Mammary tumor cells, human              | Mouse                | IgG1        |
| HB-8107™  | B25.2                                   | Mammary tumor cells, human              | Mouse                | IgM         |
| HB-8108™  | B72.3                                   | Mammary tumor cells, human              | Mouse                | IgG1        |
| HB-8110™  | B38.1                                   | Mammary tumor cells, human              | Mouse                | IgG1        |
| CRL-2431™ | 15C6                                    | MCMV, mouse and rat                     | Mouse                | IgG1        |
| HB-229™   | MD2                                     | Medullary thymic epithelium, mouse      | Rat, Mouse           | IgM         |
| HB-8672™  | WI-MN-1                                 | Melanoma associated antigens, human     | Mouse                | IgG         |
| HB-8759™  | XMMME-001                               | Melanoma associated antigens, human     | Mouse                | IgG2a       |
| HB-10743™ | SH2                                     | Mesenchymal stem cells, human           | Mouse                | IgG1        |
| HB-10744™ | SH3                                     | Mesenchymal stem cells, human           | Mouse                | IgG2b       |
| HB-10745™ | SH4                                     | Mesenchymal stem cells, human           | Mouse                | IgG1        |
| CRL-2401™ | anti-130-kDa Mesothelial-Ciliated Cells | Mesothelial and ciliated cell protein   | Mouse                | IgM         |
| CRL-2437™ | 4C9                                     | Microglobulin beta 2, rat               | Mouse                | IgG1        |
| HB-149™   | L368                                    | Microglobulin; Beta-2, human            | Mouse                | IgG1        |
| HB-28™    | BBM.1                                   | Microglobulin; Beta-2, human            | Mouse                | IgG2b       |
| HB-44™    | 63D3                                    | Monocyte, human                         | Mouse                | IgG1        |
| HB-78™    | MMA                                     | Monocyte, human                         | Mouse                | IgM         |
| HB-22™    | 4F2C13                                  | Monocyte, human                         | Mouse                | IgG2a       |
| CRL-2490™ | 28-5-15                                 | MOPC167, idiotype (V H1/V kappa 24)     | Rat, Mouse           | IgG2a       |
| CRL-2487™ | 28-2-7                                  | MOPC167, idiotype (V kappa 24)          | Rat, Mouse           | IgG1        |
| CRL-2489™ | 28-6-20                                 | MOPC167, idiotype (V kappa 24)          | Rat, Mouse           | IgG1 and 2a |
| HB-11766™ | QCRL-3                                  | MRP                                     | Mouse                | IgG2a       |
| HB-57™    | DA4-4                                   | Mu heavy chain, human                   | Mouse                | IgG1        |
| CRL-2589™ | P-6                                     | Mu-calpain, human                       | Mouse                | IgG1        |
| CRL-2590™ | P-9                                     | Mu-calpain, human                       | Mouse                | kappa       |
| CRL-1913™ | 48                                      | MuLV gp70, mouse                        | Mouse                | IgG2a       |
| CRL-1914™ | 514                                     | MuLV gp70, mouse                        | Mouse                | IgM         |
| CRL-1890™ | 548                                     | MuLV p12, mouse and rat                 | Mouse                | IgG2b       |
| CRL-1889™ | 34                                      | MuLV p15, mouse and rat                 | Mouse                | IgG2b       |
| CRL-1893™ | 372                                     | MuLV p15E, mouse and rat                | Mouse                | IgG3        |
| CRL-1912™ | R187                                    | MuLV p30, mouse and rat                 | Rat, Mouse           | IgG1        |
| CRL-1724™ | MYB2-7.77                               | Myb (v-myb and c-myb) proteins, chicken | Mouse                | IgG1        |
| CRL-1726™ | MYB2-37.63                              | Myb (v-myb and c-myb) proteins, chicken | Mouse                | IgG2b       |
| CRL-1728™ | MYB2-3.76                               | Myb (v-myb and c-myb) proteins, chicken | Mouse                | IgG2b       |
| CRL-2737™ | 132-1C8                                 | MYB oncogene peptide                    | Mouse                | IgG1        |
| CRL-1725™ | MYCCT9-B7.3                             | Myc (c-myc) protein, human              | Mouse                | IgG1        |
| CRL-1727™ | MYCCT14-G4.3                            | Myc (c-myc) protein, human              | Mouse                | IgG1        |

| ATCC® No. | Name                         | Antigenic Determinant  | Species of Hybridoma | Isotype      |
|-----------|------------------------------|--|----------------------|--------------|
| CRL-1729™ | MYC1-9E10.2[9E10]            | Myc (c-myc) protein, human                                   | Mouse                | IgG1         |
| CRL-2944™ | B11F7                        | Myelin-associated glycoprotein (MAG), human and rat          | Mouse                | IgG2b        |
| HB-8483™  | Anti-My-10 clone28/8/8/14/4  | Myeloid cells  | Mouse                | IgG1         |
| TIB-132™  | 80V5B4                       | Myeloma Protein, P3X63Ag8                                    | Mouse                | IgG2b        |
| CRL-2043™ | A4.840[4A.840]               | MyHC adult slow  | Mouse                | IgM          |
| HB-276™   | BA-G5                        | MyHC alpha, rat  | Mouse                | IgG2b        |
| CRL-2039™ | F1.652                       | MyHC embryonic, human and rodent                             | Mouse                | IgG1         |
| CRL-2040™ | N1.551                       | MyHC fast IIa, rodent  | Mouse                | IgM          |
| CRL-2042™ | N3.36                        | MyHC neonatal and adult fast                                 | Mouse                | IgM          |
| CRL-2046™ | A4.951                       | MyHC slow, human and rodent                                  | Mouse                | IgG1         |
| HB-287™   | BA-D5                        | MyHC type 1, rat   | Mouse                | IgG2b        |
| HB-277™   | SC-71                        | MyHC type 2A, rat  | Mouse                | IgG1         |
| HB-283™   | BF-F3                        | MyHC type 2B, rat  | Mouse                | IgM          |
| CRL-2041™ | A4.74[4A.74]                 | MyHC, human and rodent                                       | Mouse                | IgG1         |
| CRL-2047™ | N2.261                       | MyHC, human and rodent                                       | Mouse                | IgG1         |
| HB-278™   | BF-45                        | Myosin embryonic heavy chain                                 | Mouse                | IgG1         |
| HB-193™   | MBL-Sm-4B1                   | Myosin, para, <i>Schistosoma mansoni</i>                     | Mouse                | IgG2a        |
| HB-194™   | MBL-Sm-1A6                   | Myosin, para, <i>Schistosoma mansoni</i>                     | Mouse                | IgG2a        |
| HB-9689™  | BD5-2d                       | Neu protein, human   | Mouse                | IgG1         |
| HB-10204™ | OD-3                         | Neu protein, human   | Mouse                | IgM          |
| HB-10205™ | NB3                          | Neu protein, human   | Mouse                | IgG1         |
| HB-10206™ | TA-1                         | Neu protein, human   | Mouse                | IgG1         |
| HB-9647™  | EL-NC-1S[antiNAP-1]          | Neutrophil attractant/activation protein 1 (NAP-1, MDNCF)    | Mouse                | IgG1         |
| CRL-1787™ | HP6016                       | nG4m (b) isoallotope, human                                  | Mouse                | IgG1         |
| HB-8737™  | 200-3-G6-4(20.4)             | NGF receptor, primates                                       | Mouse                | IgG1         |
| CRL-1967™ | 88B                          | Nicotinic acetylcholine receptor, <i>Torpedo californica</i> | Mouse                | IgG1         |
| HB-9571™  | 18C2.8.3                     | NK cell target ligand on NC-37 cells                         | Mouse                |              |
| HB-9574™  | 7C6.5.4                      | NK cell target ligand on NC-37 cells                         | Mouse                |              |
| HB-240™   | 4D11                         | NK cells (LGL-1), mouse                                      | Rat, Mouse           | IgG2a        |
| HB-191™   | PK136                        | NK cells, mouse  | Mouse                | IgG2a        |
| HB-12465™ | 2A2-6E10-1D8[1D8]            | Norwalk Virus  | Mouse                | IgG1         |
| HB-12466™ | 4B2-6C3-1C9[1C9]             | Norwalk Virus  | Mouse                | IgG1         |
| CRL-1797™ | PS67                         | NP-OT, rat   | Mouse                | IgG2a        |
| CRL-1800™ | PS60                         | NP-OT, rat   | Mouse                | IgG2b        |
| CRL-1950™ | PS38                         | NP-OT, rat   | Mouse                | IgG2b        |
| HB-8068™  | 1D4                          | Nucleocapsid (p40) (HSV-1)                                   | Mouse                | IgG1         |
| HB-8067™  | 3E1                          | Nucleocapsid (p40) (HSV-1)                                   | Mouse                | IgG1         |
| TIB-116™  | PAb122                       | NVT, mouse   | Mouse                | IgG2b        |
| HB-8372™  | B11                          | ODC, mouse   | Mouse                | IgM          |
| HB-8190™  | 2G8.D6                       | o-Phosphotyrosine and proteins                               | Mouse                | IgG1         |
| CRL-2213™ | IgG-11H9                     | OSBP, rabbit   | Mouse                | IgG1         |
| HB-9147™  | OVB-3[OVB3]                  | Ovarian carcinoma, human                                     | Mouse                | IgG2a and 2b |
| CRL-1899™ | IgG-B16                      | Oxysterol binding protein                                    | Mouse                | IgG2a        |
| HB-9148™  | MAb5.2[#5.2]                 | <i>P. falciparum</i> merozoite antigen                       | Mouse                | IgG2b        |
| CRL-1965™ | 1B2A3                        | <i>P. multocida</i> , toxin producing strains                | Mouse                | IgG1         |
| CRL-1745™ | 3C9-D11-H11                  | Parvovirus (PPV), pig  | Mouse                | IgG1         |
| HB-9367™  | 116[AntiPDGF Hybridoma #116] | PDGFB, v-sis form  | Mouse                | IgG2a        |
| HB-9371™  | 219[AntiPDGF Hybridoma #219] | PDGFB, v-sis form  | Mouse                | IgG2b        |
| HB-9372™  | 232[AntiPDGF Hybridoma #232] | PDGFB, v-sis form  | Mouse                | IgG2b        |
| HB-9259™  | 4E11                         | Peptide Asp-Tyr-Lys-Asp-Asp-Asp-Asp-Lys (DYKDDDDK)           | Mouse                | IgG2b        |

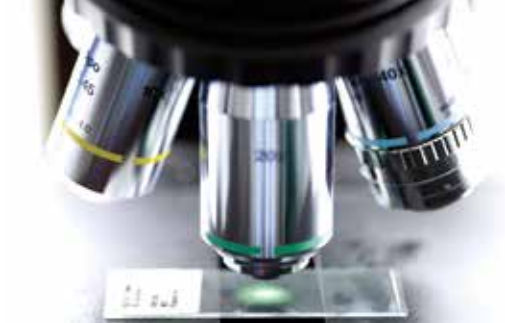
| ATCC® No. | Name                                  | Antigenic Determinant   | Species of Hybridoma | Isotype |
|-----------|---------------------------------------|---|----------------------|---------|
| HB-8511™  | 3C11                                  | Peptidoglycan, bacterial  | Mouse                | IgG1    |
| HB-8512™  | 3F6                                   | Peptidoglycan, bacterial  | Mouse                | IgM     |
| HB-8516™  | 3G3                                   | Peptidoglycan, bacterial  | Mouse                | IgM     |
| CRL-1882™ | PDL-1                                 | Periodontal ligament cells, bovine and baboon   | Mouse                | IgM     |
| HB-9479™  | MECA-79                               | Peripheral lymphnode endothelial cells, mouse   | Rat, Mouse           | IgM     |
| CRL-2696™ | 50-6[PTA-227]                         | PETA-3 (CD151)  | Mouse                | IgG1    |
| HB-9480™  | Hermes-3                              | Peyer's patch endothelial cells (CD44), human   | Mouse                | IgG2a   |
| HB-9478™  | MECA-367                              | Peyer's patch endothelial cells (MAdCAM-1), mouse                                       | Rat, Mouse           | IgG2a   |
| HB-10501™ | T529-15D3-2E5-4G12-1A7[1A7,CTCC10753] | P-glycoprotein, hFc gamma IIIR, MDR, human  | Mouse                | IgG1    |
| HB-11342™ | 443-15D3-2F12[15D3,CMCC10748]         | P-glycoprotein, MDR, human  | Mouse                | IgG1    |
| CRL-1896™ | KM703                                 | Pgp-1 (CD44), mouse   | Rat, Mouse           | IgG2a   |
| TIB-240™  | KM201                                 | Pgp-1 (CD44), mouse   | Rat, Mouse           | IgG1    |
| TIB-241™  | KM81                                  | Pgp-1 (CD44), mouse   | Rat, Mouse           | IgG2a   |
| TIB-242™  | KM114                                 | Pgp-1 (CD44), mouse   | Rat, Mouse           | IgG1    |
| TIB-235™  | IM7.8.1                               | Pgp-1 glycoprotein, mouse   | Rat, Mouse           | IgG2b   |
| HB-137™   | SE-1.3                                | Phenylarsonate  | Mouse                | IgE     |
| CRL-2538™ | 4C5G                                  | Phosphatidylinositol 4-kinase (PtdIns 4-kinase), type II, bovine brain                  | Mouse                | IgG1    |
| HB-33™    | AB1-2                                 | Phosphorylcholine plaque  | Mouse                | IgG1    |
| CRL-1891™ | FB2                                   | Phosphotyrosine   | Mouse                | IgG3    |
| CRL-1955™ | P-tyr-1                               | Phosphotyrosine   | Mouse                | IgG1    |
| CRL-1827™ | DII33.1                               | Placental insulin receptor, human   | Mouse                | IgG1    |
| CRL-2345™ | LK-4                                  | Platelet glycoprotein GPIIIa, human   | Mouse                | IgG1    |
| HB-9169™  | P38D2(SCRF43.1)                       | p-Nitroaniline amide derivatives  | Mouse                | IgG1    |
| HB-9500™  | QPN112C9(SCRF43.2)                    | p-Nitroaniline amide derivatives  | Mouse                | IgG1    |
| HB-9509™  | QPN122F5(SCRF43.2)                    | p-Nitroaniline amide derivatives  | Mouse                | IgG1    |
| HB-8329™  | CH26-1352                             | Polynucleotide homopolymers [poly(dA-dT)-poly(dA-dT) and poly(dI-dC)-poly(dI-dC)]       | Mouse                | IgM     |
| HB-8465™  | 7C8                                   | Polypeptide (NH <sub>2</sub> -Asp-Tyr-Lys-Asp-Asp-Asp-Asp-Lys-Gly-Pro-Lys-Lys-Gly-COOH) | Mouse                | IgM     |
| CRL-2501™ | mAbBB7                                | Polypyrimidine tract binding protein (PTB)  | Mouse                | IgG2b   |
| HB-8051™  | F5-A-1/22.8.13                        | Prostate antigen (PA), human  | Mouse                | IgM     |
| HB-8525™  | RLSD09[Anti-PA3,DB905CT3.5.2]         | Prostate antigen (PA), human  | Mouse                | IgG1    |
| HB-8527™  | RLSD06[Anti-PA1,DB905D5.4.3]          | Prostate antigen (PA), human  | Mouse                | IgG1    |
| HB-10494™ | 7E11C5[7E11-C5]                       | Prostate cancer antigen, human  | Mouse                | IgG1    |
| HB-9119™  | P25.48                                | Prostate cancer, human  | Mouse                | IgG3    |
| HB-11426™ | Prost410                              | prostate epithelial cells   | Mouse                | IgG1    |
| HB-8523™  | RLTM02[Anti-PAP2,DB915A3.3.2]         | Prostatic acid phosphatase (PAP), human   | Mouse                | IgG1    |
| HB-8526™  | RLTM01[Anti-PAP1,DB878G2.7.4]         | Prostatic acid phosphatase (PAP), human   | Mouse                | IgG1    |
| HB-299™   | WAPS12.2                              | P-selectin (CD62P), human   | Mouse                | IgG1    |
| CRL-1842™ | 6D8MB4                                | Pseudo rabies virus (PRV)   | Mouse                | IgG2b   |
| CRL-1843™ | 3G9F3                                 | Pseudo rabies virus (PRV)   | Mouse                | IgG2b   |
| TIB-119™  | RAN-2[alphaRAN-2,antiRAN-2]           | RAN-2, rat  | Mouse                | IgG2a   |
| CRL-1741™ | Y13-238                               | Ras oncogenes p21   | Rat                  | IgG2a   |
| CRL-1742™ | Y13-259                               | Ras oncogenes p21   | Rat                  | IgG1    |
| HB-9158™  | MX                                    | Ras, p21, Harvey  | Mouse                |         |
| HB-9893™  | G26.4.1C3/86[RAT1C3/86]               | RBC, glycophorin, human   | Mouse                | IgG1    |
| TIB-125™  | M1/69.16.11.HL                        | Red blood cells, mouse  | Rat, Mouse           | IgG2b   |
| TIB-108™  | N-S.2.1                               | Red blood cells, sheep  | Mouse                | IgM     |
| CRL-2292™ | DALK45                                | Renal cell carcinoma, human   | Mouse                | IgG1    |
| HB-167™   | 9BG5                                  | Reovirus type 3 (sigma 1 hemagglutinin)   | Mouse                | IgG2a   |

| ATCC® No. | Name                 | Antigenic Determinant  | Species of Hybridoma | Isotype |
|-----------|----------------------|--|----------------------|---------|
| CRL-2419™ | IgG-2F1              | REP-1, human   | Mouse                | IgG1    |
| HB-8783™  | D8/17                | Rheumatic fever, human   | Mouse                | IgM     |
| CRL-1759™ | TFTB1[3916.120.15]   | Ricin (A1 and A2), plant   | Mouse                | IgG1    |
| CRL-1771™ | TFTA1[3721.95.161.4] | Ricin (B), plant   | Mouse                | IgG1    |
| CRL-2491™ | 44-6-1               | Ricin, A chain   | Mouse                | IgG2b   |
| CRL-2492™ | 44-26-2              | Ricin, A chain   | Mouse                | IgG1    |
| HB-68™    | VD-10                | Saxitoxin binding component of electroplex membrane                                  | Mouse                | IgG1    |
| CRL-2347™ | IgG-9D5              | SCAP (SREBP [sterol regulatory element binding protein] cleavage activating protein) | Mouse                | IgG2b   |
| CRL-1907™ | 11E10                | Shiga like toxin II (SLT-II)   | Mouse                | IgG1    |
| CRL-1908™ | 11F11                | Shiga like toxin II (SLT-II)   | Mouse                | IgG2a   |
| CRL-1794™ | 13C4                 | shiga toxin and shiga like toxin I (SLTI)  | Mouse                | IgG1    |
| HB-139™   | 74-11-10             | SLA ABa (pig histocompatibility antigen)   | Mouse                | IgG2b   |
| HB-255™   | HS-21(subclone1H3)   | Sperm acrosomal vesicle, mammalian   | Mouse                | IgG1    |
| CRL-2031™ | anti-SC35            | Splicing factor (SC35), mammalian  | Mouse                | IgG1    |
| CRL-2384™ | anti-SRp20(7B4)      | SR p20 proteins (pre-mRNA splicing factors)  | Mouse                | IgG1    |
| CRL-2385™ | 16H3                 | SR proteins  | Mouse                | IgG1    |
| CRL-2067™ | MAB104               | SR proteins (pre-mRNA splicing factors)  | Mouse                | IgM     |
| CRL-2383™ | anti-SR(1H4)         | SR proteins (pre-mRNA splicing factors)  | Mouse                | IgG1    |
| TIB-109™  | N-S.8.1              | SRBC, sheep  | Mouse                | IgG2b   |
| TIB-110™  | N-S.4.1              | SRBC, sheep  | Mouse                | IgM     |
| TIB-111™  | S-S.1                | SRBC, sheep  | Mouse                | IgG2a   |
| TIB-112™  | S-S.3                | SRBC, sheep  | Mouse                | IgM     |
| TIB-114™  | N-S.7                | SRBC, sheep  | Mouse                | IgG3    |
| CRL-2693™ | IgG-3B2              | SREBP  | Mouse                | IgG1    |
| HB-215™   | E13161-7             | Stem cell antigen 1 (Sca-1), mouse   | Rat, Mouse           | IgG2a   |
| HB-10716™ | BA7.3C.9             | Stem cell factor (hSCF) receptor (CD117), human                                      | Mouse                | IgG2a   |
| CRL-2121™ | IgG-2A4              | Sterol regulatory element binding protein (SREBP), human                             | Mouse                | IgG1    |
| CRL-2198™ | IgG-7D4              | Sterol regulatory element binding protein 2 (SREBP2, SREBP-2), hamster               | Mouse                | IgG2b   |
| CRL-2224™ | IgG-1C6              | Sterol regulatory element binding protein 2 (SREBP2, SREBP-2), human                 | Mouse                | IgG1    |
| CRL-2545™ | IgG-1D2              | Sterol regulatory element binding protein 2 (SREBP2, SREBP-2), human                 | Mouse                | IgG1    |
| HB-12558™ | SWLA3                | <i>Streptococcus mutans</i>  | Mouse                |         |
| HB-12559™ | SWLA1                | <i>Streptococcus mutans</i>  | Mouse                | IgG2a   |
| HB-12560™ | SWLA2                | <i>Streptococcus mutans</i>  | Mouse                | IgG2a   |
| CRL-1951™ | mSXL5                | Sxl, the female specific sex lethal gene   | Mouse                | IgG1    |
| CRL-1952™ | mSXL18               | Sxl, the female specific sex lethal gene   | Mouse                | IgG1    |
| CRL-1953™ | mSXL104              | Sxl, the female specific sex lethal gene   | Mouse                | IgG1    |
| CRL-1954™ | mSXL114              | Sxl, the female specific sex lethal gene   | Mouse                | IgG1    |
| CRL-2381™ | JAA-F11              | T antigen G alpha 1-3  | Mouse                | IgG3    |
| HB-2™     | T3-3A1[3A1]          | T cell acutelymphoblastic leukemia   | Mouse                | IgG1    |
| HB-9282™  | W4F5B                | T cell antigen receptor, human   | Mouse                | IgG2a   |
| HB-9283™  | (BF1)8A3.31          | T cell antigen receptor, human   | Mouse                | IgG1    |
| CRL-2424™ | C305                 | T cell antigen receptor, Jurkat cells, beta chain                                    | Mouse                | IgM     |
| HB-218™   | H57-597              | T cell antigen receptor, mouse   | Hamster, mouse       | IgG     |
| HB-219™   | TR310                | T cell receptor, mouse   | Rat, Mouse           | IgG2b   |
| HB-286™   | 86D[127.5-9]         | T cell receptor, sheep gamma/delta, pig  | Mouse                | IgG1    |
| CRL-8013™ | OKT5                 | T cell, human  | Mouse                | IgG1    |
| CRL-8016™ | OKT5                 | T cell, human  | Mouse                | IgG1    |
| HB-23™    | 20-10-5S             | T cell, mouse  | Mouse                | IgM     |

| ATCC® No. | Name                         | Antigenic Determinant                          | Species of Hybridoma | Isotype             |
|-----------|------------------------------|--|----------------------|---------------------|
| HB-143™   | 76-2-11                      | T cell, pig                                    | Mouse                | IgG2a               |
| CRL-1761™ | 9AE10                        | T cells, rabbit                                | Mouse                | IgM                 |
| TIB-188™  | L11/135                      | T cells, rabbit                                | Mouse                | IgG1                |
| CRL-1988™ | UC3-10A6                     | TCR gamma/delta, mouse                         | Hamster, mouse       | IgG                 |
| CRL-1989™ | UC7-13D5                     | TCR gamma/delta, mouse                         | Hamster, mouse       | IgG                 |
| CRL-2827™ | 1G12                         | TCR, 3A9                                       | Mouse                | IgG1                |
| HB-8177™  | 9F12                         | Tetanus toxin                                  | Human, Mouse         | IgG1                |
| HB-8501™  | SA13                         | Tetanus toxin                                  | Human                | IgG                 |
| HB-9849™  | 1D11.16.8                    | TGF-beta2                                      | Mouse                | IgG1                |
| HB-8152™  | 30/15                        | Theophylline                                   | Mouse                | IgG1                |
| HB-8153™  | 17/14                        | Theophylline                                   | Mouse                | IgG1                |
| HB-8154™  | 61/7                         | Theophylline                                   | Mouse                | IgG1                |
| HB-8785™  | F3B6                         | 6-Thioguanine                                  | Human, Mouse         |                     |
| TIB-238™  | M5/49.4.1                    | Thy-1  | Rat, Mouse           | IgG2a               |
| HB-8553™  | K117                         | Thy-1, gp25 glycoprotein, human                | Mouse                | IgG1                |
| TIB-100™  | HO-22-1                      | Thy-1.1 antigen                                | Mouse                | IgM                 |
| TIB-103™  | T11D7e2                      | Thy-1.1 antigen                                | Mouse                | IgM                 |
| TIB-99™   | HO-13-4                      | Thy-1.2  | Mouse                | IgM                 |
| TIB-184™  | J1j.10                       | Thy-1.2  | Rat, Mouse           | IgM                 |
| TIB-107™  | 30-H12                       | Thy-1.2  | Rat, Mouse           | IgG2b               |
| HB-206™   | TE15                         | Thymic epithelium (Hassall's bodies), human    | Mouse                | IgM                 |
| HB-210™   | TE16                         | Thymic epithelium (Hassall's bodies), human    | Mouse                | IgG1                |
| HB-211™   | TE19                         | Thymic epithelium (Hassall's bodies), human    | Mouse                | IgM                 |
| HB-212™   | TE8                          | Thymic epithelium (Hassall's bodies), human    | Mouse                | IgG2a               |
| HB-12497™ | TS106                        | Thymidylate synthase (TS), human               | Mouse                | IgG1                |
| CRL-8020™ | OKT6                         | Thymocyte (CD1), human                         | Mouse                | IgG1                |
| HB-177™   | A1G3                         | Thymocyte, human                               | Mouse                | IgG2a               |
| HB-209™   | TE3[TE3A]                    | Thymus (cortica lthymic epithelium), human     | Mouse                | IgG2                |
| HB-207™   | TE4                          | Thymus (thymic endocrine epithelium), human    | Mouse                | IgM                 |
| HB-208™   | TE7                          | Thymus, human                                  | Mouse                | IgG1                |
| CRL-2680™ | TSHR-T5-51                   | Thyroid stimulating hormone (TSH), human       | Mouse                | IgG1                |
| CRL-2681™ | TSHR-R5T-44                  | Thyroid stimulating hormone (TSH), human       | Mouse                | IgG1                |
| CRL-2682™ | TSHR-T5U-317                 | Thyroid stimulating hormone (TSH), human       | Mouse                | IgG1                |
| CRL-2683™ | TSHR-R5T-34                  | Thyroid stimulating hormone (TSH), human       | Mouse                | IgG1                |
| CRL-2684™ | TSHR-T3-365                  | Thyroid stimulating hormone (TSH), human       | Mouse                | IgG2a               |
| HB-8500™  | T4 Clone 5 (10-0101,0062-83) | Thyroxine (T4,3,5,3',5'-tetraiodo-L-thyronine) | Mouse                | IgG1                |
| HB-8213™  | 2T8-3E10                     | Ti1b antigen, human                            | Mouse                | IgM                 |
| HB-131™   | I(TL.m9)                     | TL antigen                                     | Mouse                | IgG2a               |
| HB-252™   | HD168                        | TL antigen, mouse                              | Rat, Mouse           | IgG2a               |
| CRL-8021™ | OKT9                         | Transferrin receptor, human                    | Mouse                | IgG1                |
| HB-21™    | 5E9C11                       | Transferrin receptor, human                    | Mouse                | IgG1                |
| HB-84™    | L5.1                         | Transferrin receptor, human                    | Mouse                | IgG2a               |
| TIB-219™  | R17217.1.3                   | Transferrin receptor, mouse                    | Rat, Mouse           | IgG2a               |
| TIB-220™  | R17208.2                     | Transferrin receptor, mouse                    | Rat, Mouse           | IgM,IgM             |
| HB-8133™  | 1939-3G5                     | <i>Treponema pallidum</i>                      | Mouse                | IgM                 |
| HB-8134™  | 1939-8G2                     | <i>Treponema pallidum</i>                      | Mouse                | IgG1                |
| HB-8678™  | 7C2C5C12                     | <i>Trichinella spiralis</i>                    | Mouse                | IgM                 |
| HB-8770™  | FHCR-1-2075/FH5[FH5]         | Trifucosylated type 2 chain glycolipids        | Mouse                | IgM                 |
| TIB-141™  | IGELb4                       | 2,4,6-Trinitrophenyl (TNP)                     | Mouse                | IgE (Igb haplotype) |

| ATCC® No. | Name              | Antigenic Determinant                            | Species of Hybridoma | Isotype             |
|-----------|-------------------|--|----------------------|---------------------|
| TIB-142™  | IGELa2[15.3]      | 2,4,6-Trinitrophenyl (TNP)                       | Mouse                | IgE (Igb haplotype) |
| TIB-191™  | 1B7.11            | 2,4,6-Trinitrophenyl (TNP)                       | Mouse                | IgG1                |
| TIB-194™  | 2F11.15           | 2,4,6-Trinitrophenyl (TNP)                       | Mouse                | IgA                 |
| HB-241™   | 162-21.2          | Trop-1 antigen                                   | Mouse                | IgG2a               |
| HB-187™   | 162-46.2[Trop-2]  | Trop-2 antigen, human                            | Mouse                | IgG1                |
| HB-9515™  | C171[Clone171]    | Trypsin inhibitor, K unitz soybean               | Mouse                | IgG1                |
| HB-9517™  | C180[Clone180]    | Trypsin inhibitor, K unitz soybean               | Mouse                | IgG1                |
| HB-11129™ | P3D               | Tubulin nematode origin, beta                    | Mouse                | IgG                 |
| CRL-2746™ | 2C1H7[[PTA-2846]] | Tubulin, beta, human                             | Mouse                | IgG1                |
| CRL-1798™ | PS45              | Vasopressin associated neurophysin (NP-AVP), rat | Mouse                | IgG2b               |
| CRL-1799™ | PS41              | Vasopressin associated neurophysin (NP-AVP), rat | Mouse                | IgG2b               |
| CRL-1909™ | M/K-2.7           | VCAM-1, mouse and rat                            | Rat, Mouse           | IgG1                |
| CRL-1910™ | M/K-1.9           | VCAM-1, mouse and rat                            | Rat, Mouse           | IgG1                |
| HB-10519™ | VIII-6G10         | VCAM-1, VCAM1, human and macaque                 | Mouse                | IgG1                |
| HB-11534™ | DC101             | VEGF receptor-2 (Flk-1/KDR), mouse and rat       | Rat, Mouse           | IgG1                |
| HB-8172™  | E6(2)2            | Vitamin B6                                       | Mouse                | IgG1                |
| CRL-2739™ | 131-94H4          | V-myb oncogene peptide                           | Mouse                | IgG1                |
| CRL-1875™ | 8A3B.6            | VP7, blue tongue virus                           | Mouse                | IgG2a               |
| CRL-1877™ | 8B1B.1            | VP7, blue tongue virus                           | Mouse                | IgG2b               |
| CRL-1886™ | 7D3A.2            | VP7, blue tongue virus                           | Mouse                | IgG2b               |
| HB-274™   | CC39              | WC1 (BoWC1), bovine                              | Mouse                | IgG1                |
| HB-265™   | CC15              | WC1 (BoWC1), bovine                              | Mouse                | IgG2a               |
| CRL-1874™ | IL-A29            | WC1 antigen, bovine                              | Mouse                | IgG1                |
| CRL-2546™ | H5.46[546]        | West Nile Virus                                  | Mouse                | IgM                 |
| CRL-1689™ | 2D12              | Yellow fever virus                               | Mouse                | IgG2a               |
| CRL-2567™ | H1.6              | ZP1 glycoprotein, human                          | Mouse                | IgG1                |
| CRL-2568™ | H2.8              | ZP2 glycoprotein, human                          | Mouse                | IgG1                |
| CRL-2569™ | H3.1              | ZP3 glycoprotein, human                          | Mouse                | IgG1                |





CB-0514-01

© 2014 American Type Culture Collection. The ATCC trademark and trade name, any and all ATCC catalog numbers and any other trademarks listed in this publication are trademarks of the American Type Culture Collection unless indicated otherwise.

These products are for laboratory use only. Not for human or diagnostic use. ATCC products may not be resold, modified for resale, used to provide commercial services or to manufacture commercial products without prior ATCC written approval.

Tel 800.638.6597  
703.365.2700  
Fax 703.365.2750  
Email [sales@atcc.org](mailto:sales@atcc.org)  
Web [www.atcc.org](http://www.atcc.org)

Or contact your local distributor

