



PRODUCT SPOTLIGHT

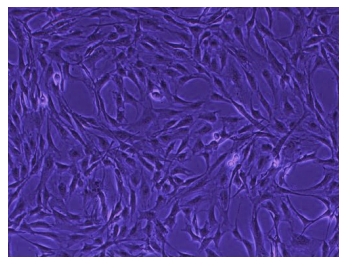
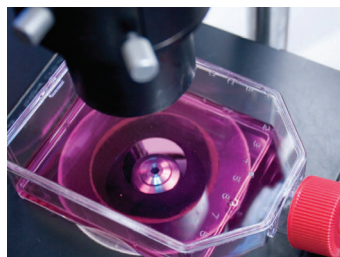
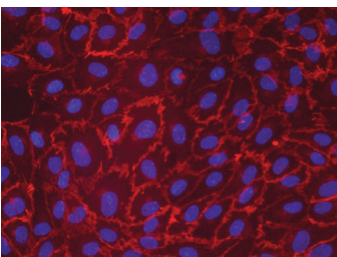
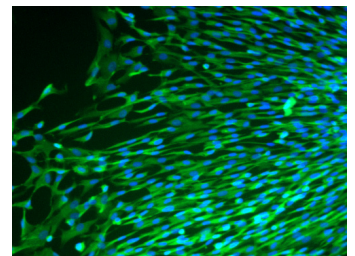
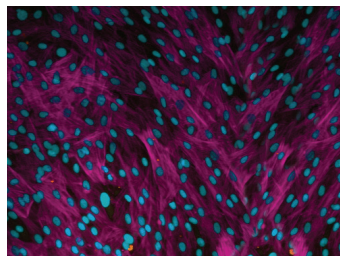
PRIMARY CELL SOLUTIONS®

Primary cell cultures closely mimic the physiological state of cells in vivo and generate relevant data representing living organisms.

ATCC Primary Cell Solutions is a system of matched components designed to boost growth, maximize functionality, and maintain normal morphology for each primary cell type. The combination of an optimized basal medium and cell-specific growth kits is a crucial element in the ATCC Primary Cell Solutions product line. Each set is designed to eliminate the guesswork involved with finding just the right complement of growth factors to support and promote cell proliferation and the expression of relevant biomarkers for each cell type – a complete lab tested “solution” to your primary cell culture needs.

ATCC Primary Cells are well characterized, having undergone tests for sterility and viability. In addition, primary cells are produced under controlled isolation and processing protocols, which minimizes intra-lot variation and provides cells with maximal and consistent performance. ATCC Product Experience can provide additional donor information to aid in selecting the most relevant primary cell lots to guarantee the optimal outcome for your experiments.

ATCC Primary Cell Solutions basal media and growth kits have been quality tested for sterility and performance tested with each respective cell type to ensure that the vital needs of the individual culture are consistently met. Supplementation of the basal media with an appropriate growth kit is essential in creating an optimal growth environment for cellular response.



INTRODUCING HEPATOXCELL BY ATCC

Primary human hepatocytes meticulously isolated and characterized to ensure the highest quality and performance for your in vitro liver model use.

This table provides the 3 new primary human hepatocyte options and companion media to enable your predictive drug development and toxicity testing.

Table 1: Primary Human Hepatocytes

Product Name	ATCC® No.	Notes	Amount
HepatoXcell Eco	PCS-450-012™	Suspension	1 vial, ≥ 4 x 10 ⁶ cells
HepatoXcell Plus	PCS-450-010™	3-Day Plateable; Adult	1 vial, ≥ 4 x 10 ⁶ cells
HepatoXcell Pro	PCS-450-011™	7-Day Plateable; Juvenile	1 vial, ≥ 4 x 10 ⁶ cells
HepatoXcell Thawing Medium	PCS-450-032™	1 bottle	250 mL
HepatoXcell Maintenance Medium	PCS-450-034™	1 bottle	500 mL
HepatoXcell Plating Medium	PCS-450-038™	1 bottle	100 mL

PRIMARY CELLS, SUPPORTING MEDIA, AND GROWTH KITS

The table below is organized by cell type and includes the number of cells that are contained in each vial of primary cells. Also in the table, the product numbers of matched basal media and growth kits are provided for ease of ordering as well as to ensure the optimal growth and performance of your primary cells.

Cell Type	Product Name	ATCC® No.	Number of Cells/vial	Growth Kit	Basal Media
Endothelial Cells	Aortic Endothelial Cells	PCS-100-011™	500,000		
	Coronary Artery Endothelial Cells	PCS-100-020™	500,000	Endothelial Cell Growth Kit-BBE (ATCC® PCS-100-040™) or Endothelial Cell Growth Kit-VEGF (ATCC® PCS-100-041™)	Vascular Cell Basal Medium (ATCC® PCS-100-030™)
	Umbilical Vein Endothelial Cells	PCS-100-010™	500,000		
	Umbilical Vein Endothelial Cells; Pooled	PCS-100-013™	500,000		
	Dermal Microvascular Endothelial Cells; Neonatal	PCS-110-010™	500,000	Microvascular Endothelial Cell Growth Kit-BBE (ATCC® PCS-110-040™) or Microvascular Endothelial Cell Growth Kit-VEGF(ATCC® PCS-110-041™)	
	Pulmonary Artery Endothelial Cells	PCS-100-022™	500,000		
Muscle Cells	Aortic Smooth Muscle Cells	PCS-100-012™	500,000		
	Bladder Smooth Muscle Cells	PCS-420-012™	500,000		
	Bronchial/Tracheal Smooth Muscle Cells	PCS-130-011™	500,000		
	Coronary Artery Smooth Muscle Cells	PCS-100-021™	500,000	Vascular Smooth Muscle Cell Growth Kit (ATCC® PCS-100-042™)	Vascular Cell Basal Medium (ATCC® PCS-100-030™)
	Lung Smooth Muscle Cells	PCS-130-010™	500,000		
	Pulmonary Artery Smooth Muscle Cells	PCS-100-023™	500,000		
	Uterine Smooth Muscle Cells	PCS-460-011™	500,000		
	Primary Skeletal Muscle Cells	PCS-950-010™	500,000	Primary Skeletal Cell Muscle Growth Kit (ATCC® PCS-950-040™)	Mesenchymal Stem Cell Basal Medium (ATCC® PCS-500-030™)

Cell Type	Product Name	ATCC® No.	Number of Cells/vial	Growth Kit	Basal Media
Epithelial Cells	Bladder Epithelial Cells (A/T/N)	PCS-420-010™	500,000	Bladder Epithelial Growth Kit (ATCC® PCS-420-042™)	Bladder Epithelial Basal Medium (ATCC® PCS-420-032™)
	Bronchial/Tracheal Epithelial Cells	PCS-300-010™	500,000	Bronchial Epithelial Cell Growth Kit (ATCC® PCS-300-040™)	Airway Epithelial Cell Basal Medium (ATCC® PCS-300-030™)
	Small Airway Epithelial Cells	PCS-301-010™	500,000		
	Cervical Epithelial Cells	PCS-480-011™	500,000	Cervical Epithelial Growth Kit (ATCC® PCS-480-042™)	Cervical Epithelial Cell Basal Medium (ATCC® PCS-480-032™)
	Corneal Epithelial Cells	PCS-700-010™	500,000	Corneal Epithelial Growth Kit (ATCC® PCS-700-040™)	Corneal Epithelial Cell Basal Medium (ATCC® PCS-700-030™)
	Mammary Epithelial Cells	PCS-600-010™	500,000	Mammary Epithelial Cell Growth Kit (ATCC® PCS-600-040™)	Mammary Epithelial Cell Medium (ATCC® PCS-600-030™)
	Prostate Epithelial Cells	PCS-440-010™	500,000	Prostate Epithelial Cell Growth Kit (ATCC® PCS-440-040™)	Prostate Epithelial Basal Medium (ATCC® PCS-440-030™)
	Renal Cortical Epithelial Cells	PCS-400-011™	500,000	Renal Epithelial Cell Growth Kit (ATCC® PCS-400-040™)	Renal Epithelial Cell Basal Medium (ATCC® PCS-400-030™)
	Renal Mixed Epithelial Cells	PCS-400-012™	500,000		
	Renal Proximal Tubule Epithelial Cells	PCS-400-010™	500,000		
Primary Lobar Epithelial Cells	PCS-300-015™	500,000	Bronchial Epithelial Cell Growth Kit (ATCC® PCS-300-040™)	Airway Epithelial Cell Basal Medium (ATCC® PCS-300-030™)	
Fibroblasts	Bladder Fibroblast Cells	PCS-420-013™	500,000	Fibroblast Growth Kit-Low serum (ATCC® PCS-201-041™)	Fibroblast Basal Medium (ATCC® PCS-201-030™)
	Dermal Fibroblasts; Adult	PCS-201-012™	500,000	Fibroblast Growth Kit, Serum-free (ATCC® PCS-201-040™) or Fibroblast Growth Kit, Low Serum (ATCC® PCS-201-041™)	
	Dermal Fibroblasts; Neonatal	PCS-201-010™	500,000		
	Gingival Fibroblast	PCS-201-018™	500,000	Fibroblast Growth Kit-Low serum (ATCC® PCS-201-041™)	
	Uterine Fibroblasts	PCS-460-010™	500,000	(ATCC® PCS-201-041™)	
Blood and Marrow Cells	Bone Marrow CD34+ Cells	PCS-800-012™	500,000	Application-specific*	
	Bone Marrow Mononuclear Cells	PCS-800-013™	25 million		
	Cord Blood CD34+ Cells	PCS-800-014™	500,000		
	iPSC-derived CD34+ Cells, BXS0117	ACS-7020™	3 million		
	iPSC-derived Monocytes, DYS0100	ACS-7030™	3 million		
	Peripheral Blood CD14+ Monocytes	PCS-800-010™	50 million		
	Peripheral Blood Mononuclear Cells (PBMC)	PCS-800-011™	25 million		
	Peripheral Blood CD4+ Helper T Cells	PCS-800-016™	500,000		
	Peripheral Blood CD8+ Cytotoxic T Cells	PCS-800-017™	25 million		
	Peripheral Blood CD19+ B Cells	PCS-800-018™	25 million		
Peripheral Blood CD56+ Natural Killer Cells	PCS-800-019™	5 million			
Keratinocytes	Epidermal Keratinocytes; Adult	PCS-200-011™	500,000	Keratinocyte Growth Kit (ATCC® PCS-200-040™)	Dermal Cell Basal Medium (ATCC® PCS-200-030™)
	Epidermal Keratinocytes; Neonatal Foreskin	PCS-200-010™	500,000		
	Gingival Keratinocytes	PCS-200-014™	500,000		
Melanocytes	Epidermal Melanocytes; Adult	PCS-200-013™	500,000	Melanocyte Growth Kit (ATCC® PCS-200-041™)	Dermal Cell Basal Medium (ATCC® PCS-200-030™)
	Epidermal Melanocytes; Neonatal Foreskin	PCS-200-012™	500,000	Adult Melanocyte Growth Kit (ATCC® PCS-200-042™)	


Cell Type	Product Name	ATCC® No.	Number of Cells/vial	Growth Kit	Basal Media
Mesenchymal Stem Cells	Adipose-derived Mesenchymal Stem Cells	PCS-500-011™	1 million	Mesenchymal Stem Cell Growth Kit (ATCC® PCS-500-040™)	Mesenchymal Stem Cell Basal Medium (ATCC® PCS-500-030™)
	Umbilical Cord-derived Mesenchymal Stem Cells	PCS-500-010™	500,000		
	iPSC-derived Mesenchymal Stem Cells, BYS0112	ACS-7010™	3 million	Mesenchymal Stem Cell Growth Kit for Bone Marrow MSCs (ATCC® PCS-500-041™)	
	Bone Marrow-derived Mesenchymal Stem Cells	PCS-500-012™	1 million		
	Subcutaneous Preadipocytes	PCS-210-010™	1 million	Fibroblast Growth Kit, Low Serum (ATCC® PCS-201-401™)	

*Blood and bone marrow cells have a limited lifespan in culture and should only be thawed immediately prior to their intended use. ATCC does not recommend maintaining blood and bone marrow cells in culture in the absence of application-specific growth factors.

See our online catalog at www.atcc.org/PCS for a full description of each item and to see an up-to-date listing. For a listing of primary cells immortalized by hTERT, visit www.atcc.org/hTERT.

SEE OUR ONLINE CATALOG AT WWW.ATCC.ORG/PCS FOR A FULL DESCRIPTION OF EACH ITEM.

 10801 University Boulevard
Manassas, Virginia 20110-2209

 703.365.2700

 703.365.2701

 sales@atcc.org

 www.atcc.org

PC-042025-v19

©2025 American Type Culture Collection. The ATCC trademark and trade name, and any other trademarks listed in this publication are trademarks owned by the American Type Culture Collection unless indicated otherwise.

These products are for laboratory use only. Not for human or diagnostic use. ATCC products may not be resold, modified for resale, used to provide commercial services or to manufacture commercial products without prior ATCC written approval.