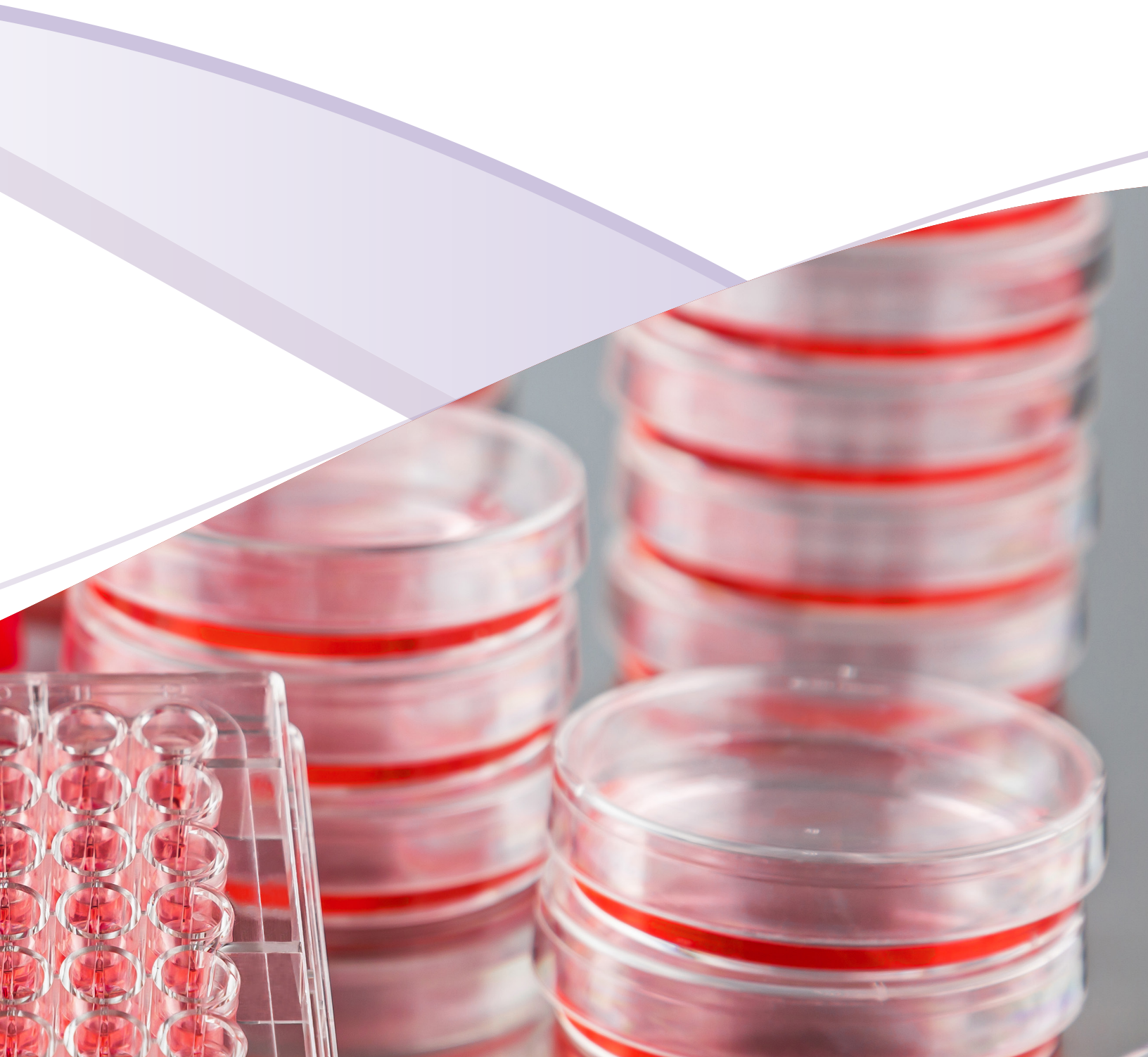




# High Performance Media, Sera, and Reagents



# ATCC® HIGH-PERFORMANCE MEDIA, SERA, AND REAGENTS

## ATCC MEDIA, SERA, AND REAGENTS ARE TAILORED TO EXACT SPECIFICATIONS – DISCOVER THE DIFFERENCE

Using ATCC high-performance media, sera, and reagents will ensure robust, continuous cell growth, consistent performance, and minimum cell loss when reviving cells from cryopreservation. These high-performance products are used during the recovery, expansion, cryopreservation, and distribution of ATCC cell lines, virtually guaranteeing successful cell culture every time you thaw a frozen vial of cells.

Tested and optimized, ATCC high-performance media and sera are then used to produce and distribute our more than 4,000 different cell lines. These reagents are made available to the research community only through ATCC.

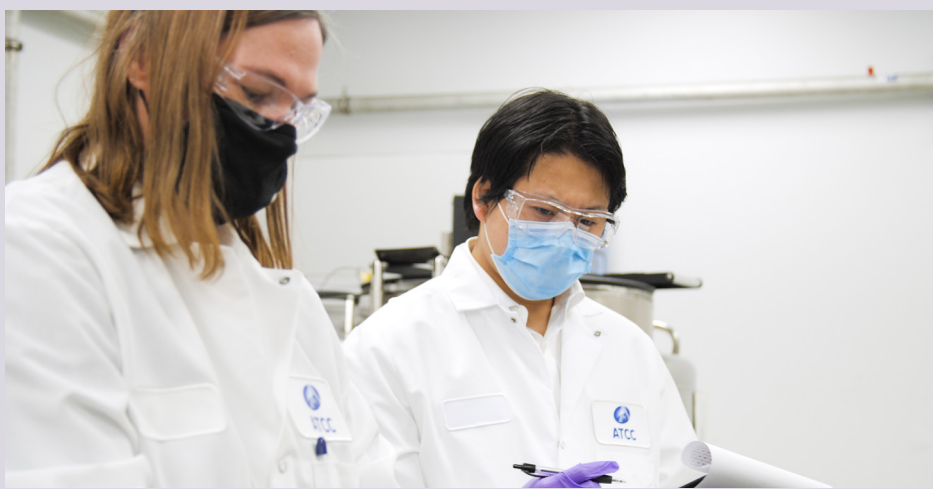
Cells lines are ensured with a 30-day warranty when cultured with ATCC media and serum.

## ATCC HIGH-PERFORMANCE MEDIA CLASSIC FORMULATIONS

Formulations for each of the classical medium types are available on product pages on ATCC's website.

*“ATCC is a center with professional culture. Huge and exclusive range of products, with great quality and service is of top quality. I highly recommend ATCC to everyone.”*

Vandana Singh  
Research Scientist/Staff Scientist  
Prodigy Biotech



**Table 1: ATCC media**

ATCC® No.	Product Name	Volume
<a href="#">30-2001™</a>	RPMI-1640 Medium	500 mL
<a href="#">30-2002™</a>	Dulbecco's Modified Eagle's Medium (DMEM)	500 mL
<a href="#">30-2003™</a>	Eagle's Minimum Essential Medium (EMEM)	500 mL
<a href="#">30-2004™</a>	F12K Medium	500 mL
<a href="#">30-2005™</a>	Iscove's Modified Dulbecco's Medium (IMDM)	500 mL
<a href="#">30-2006™</a>	DMEM:F12 Medium (1:1 Ratio)	500 mL
<a href="#">30-2007™</a>	McCoy's 5A Medium, Modified	500 mL
<a href="#">30-2011™</a>	McCoy's 5A Medium, Modified, Peptone-Free	500 mL
<a href="#">30-2008™</a>	Leibovitz's L-15 Medium	500 mL
<a href="#">46-X™</a>	Hybri-Care Medium, Powder	Prepares 1L

# ATCC® HIGH-PERFORMANCE SERA

## ATCC® SERA RESULT IN THE MOST RELIABLE CELL GROWTH – EXPERIENCE THE DIFFERENCE

ATCC high-performance animal sera come from USDA-approved origins. Experienced technicians thoroughly test the packaged sera to eliminate contamination concerns. All ATCC sera are prequalified on multiple cell lines to ensure robust growth using both sequential subcultures and plating efficiencies.

Each lot of ATCC high-performance sera is subjected to comprehensive tests for sterility and performance, including:

- Sterility tests performed on each lot using current USP methods for bacterial and fungal contamination.
- Comprehensive viral testing adhering to 9 CFR 113.53 guidelines.
- *Mycoplasma* testing performed via direct culture and Hoechst DNA staining.
- Limulus Amoebocyte Lysate (LAL) assay used to measure Endotoxin values.

All tests are performed post-packaging to guarantee the highest quality, best performing sera.

***“After a couple of failed attempts to grow ZF-4 cells in medium supplemented with serum from other manufacturers, I switched to ATCC Fetal Bovine Serum (ATCC® 30-2020™). Using this serum, I obtained good recovery, viability, and robust growth.”***

Dr. Annette Schenck  
Max Planck Institute of Molecular  
Cell Biology and Genetics  
Dresden, Germany



**Table 2: Animal sera**

ATCC® No.	Product Name	Volume
<u>30-2020</u> ™	Fetal Bovine Serum	500 mL
<u>30-2021</u> ™	Fetal Bovine Serum	100 mL
<u>30-2030</u> ™	Calf Bovine Serum	500 mL
<u>30-2031</u> ™	Calf Bovine Serum	100 mL
<u>SCRR-30-2020</u> ™*	Fetal Bovine Serum, ES Qualified	500 mL
<u>30-2025</u> ™**	Fetal Bovine Serum, EU Approved	500 mL
<u>30-2026</u> ™**	Fetal Bovine Serum, EU Approved	100 mL

\* Qualified with Human Mesenchymal Stem Cells

\*\* Only for sale to EU customers

# ATCC® CELL CULTURE REAGENTS

## ATCC-TESTED MEDIA SUPPLEMENTS AND SUBCULTURE REAGENTS – ADDITIONAL TOOLS FOR YOUR SUCCESS

Media supplements, antibiotics, and reagents from ATCC allow you to customize the growth, maintenance, and expansion of your cells. Backed by the same commitment to quality, each supplement, antibiotic, and reagent from ATCC is tested for sterility and efficacy.

**Table 3: Buffers**

ATCC® No.	Product Name	Volume
30-2200™	Dulbecco's Phosphate Buffered Saline (DPBS)*	500 mL
30-2213™	Hank's Balanced Salt Solution (HBSS)*	500 mL

**Table 4: Cell dissociation reagents**

ATCC® No.	Product Name	Volume
30-2101™	0.25% Trypsin/0.53 mM EDTA Solution	100 mL
30-2103™	Non-Enzymatic Cell Dissociation Solution	100 mL
30-2104™	Soybean Trypsin Inhibitor	20 mL
PCS-999-003™	Trypsin-EDTA for Primary Cells*	100 mL
PCS-999-004™	Trypsin Neutralizing Solution	100 mL
Coming Soon	Xeno-Free Trypsin Inhibitor	100 mL

**Table 5: Cryopreservation solutions**

ATCC® No.	Product Name	Volume
4-X™	Dimethylsulfoxide (DMSO)	5 x 5 mL
30-2600™	Serum-Free Cell Freezing Medium	20 mL
ACS-6000™	CoolCell® LX Alcohol-Free Cryopreservation Container	EA

**Table 6: Antibiotics and reagents**

ATCC® No.	Product Name	Volume
30-2300™	Penicillin-Streptomycin Solution	100 mL
PCS-999-002™	Penicillin-Streptomycin-Amphotericin B Solution	1.0 mL
30-2214™	L-Glutamine Solution	100 mL
PCS-999-027™	0.1% Gelatin Solution	100 mL
PCS-999-001™	Phenol Red	1.0 mL

\* Formulations available online.

***“ATCC products are reliable and of high quality. The shipping is quick.”***

Ya Wang  
Postdoctoral Fellow  
Harvard University



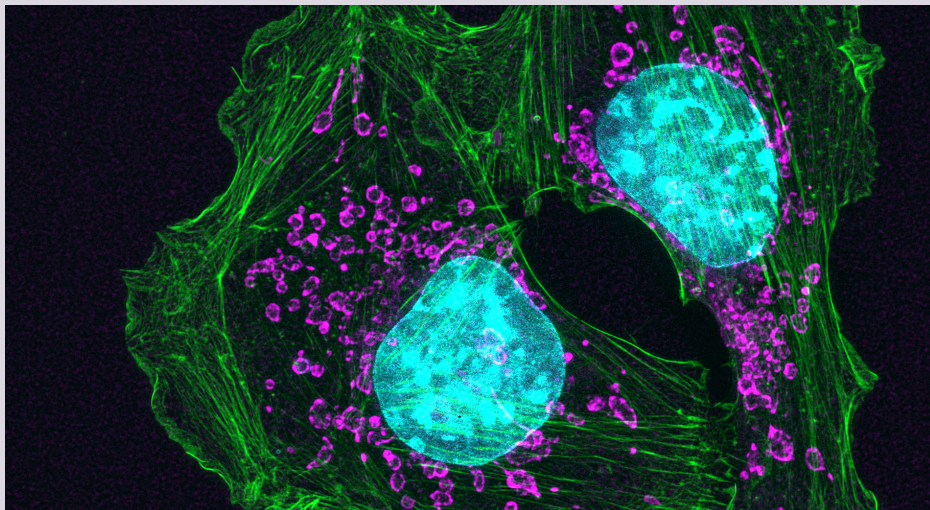
## ATCC® CELL AUTHENTICATION SERVICES

Research results are only valid and reproducible when the cell cultures and materials used in experiments are accurately identified and uncontaminated. ATCC offers scientists a range of high-quality cell authentication testing services backed by nearly a century of experience in biomaterial management and authentication standards.

ATCC can help you find the solutions that best meet your needs—explore our cell authentication offerings and let us help you guarantee the integrity of your research.

*“The high standards of authentication, preservation, and distribution are key reasons we’ve chose to partner with ATCC to preserve and distribute rare cancer cell lines.”*

Dr. Barbara Van Hare  
Director of Foundation Partnerships  
The Rare Cancer Research Foundation



### HUMAN CELL STR PROFILING

STR markers—tiny repeating segments of DNA between genes—at specific loci establish a DNA fingerprint for every human cell line.

### MOUSE CELL STR PROFILING

Our mouse STR assay validates the authenticity of mouse cell lines and detects contamination by human and African green monkey DNA.

### MYCOPLASMA TESTING SERVICE


Check your cells for contamination with the PCR-based mycoplasma testing service. Our assay can identify over 60 species of mycoplasma and can deliver results in 3-5 business days.

**Table 7: Authentication services**


ATCC® No.	Product Name	Unit
<a href="#">135-XV™</a>	FTA Sample Collection Kit for Human Cell Authentication Service	1 Kit
<a href="#">135-XV-10™</a>	FTA Sample Collection Kit for Human Cell Authentication Service	10 Kits
<a href="#">135-XV-20™</a>	FTA Sample Collection Kit for Human Cell Authentication Service	20 Kits
<a href="#">137-XV™</a>	FTA Sample Collection Kit for Mouse Cell Authentication Service	1 Kit
<a href="#">136-XV™</a>	PCR-based <i>Mycoplasma</i> Testing Service	1 Kit









10801 University Boulevard  
Manassas, Virginia 20110-2209

 703.365.2700

 703.365.2701

 [sales@atcc.org](mailto:sales@atcc.org)

 [www.atcc.org](http://www.atcc.org)

**CB-102024-v05**

©2024 American Type Culture Collection. The ATCC trademark and trade name, and any other trademarks listed in this publication are trademarks owned by the American Type Culture Collection unless indicated otherwise.

These products are for laboratory use only. Not for human or diagnostic use. ATCC products may not be resold, modified for resale, used to provide commercial services or to manufacture commercial products without prior ATCC written approval.

