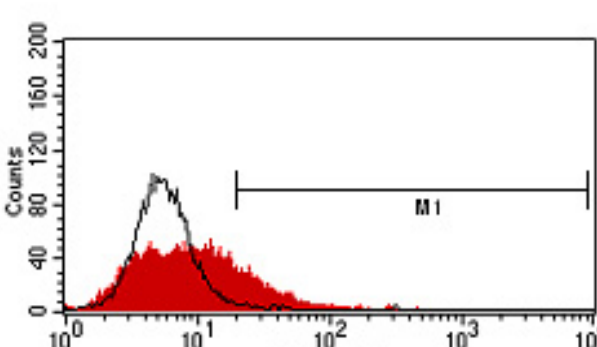
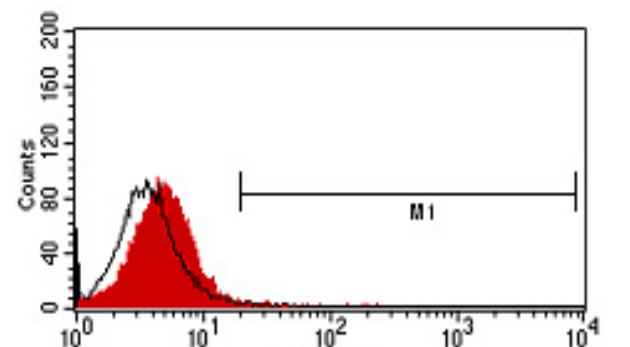
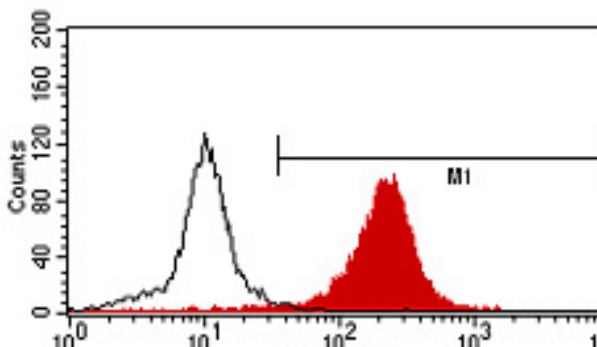
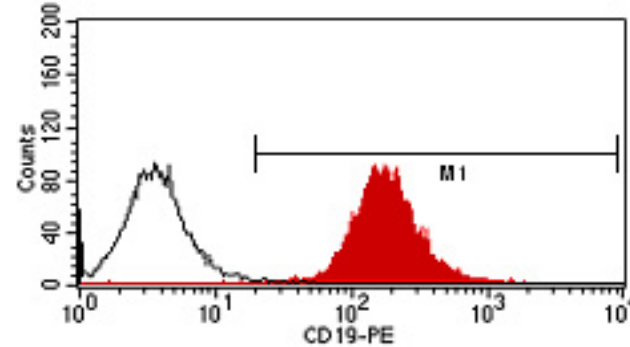
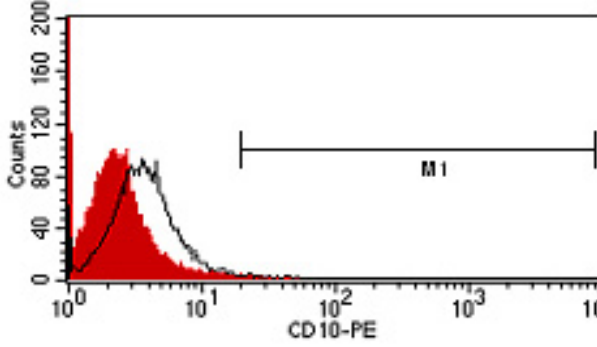
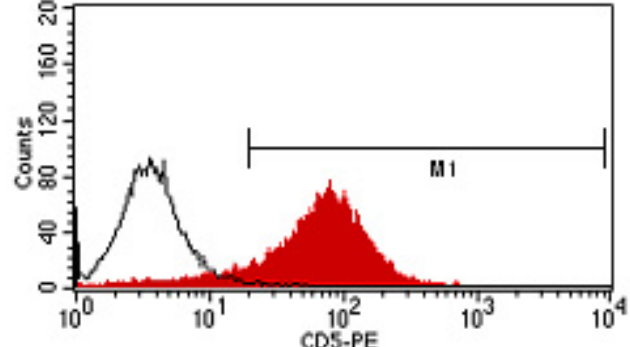
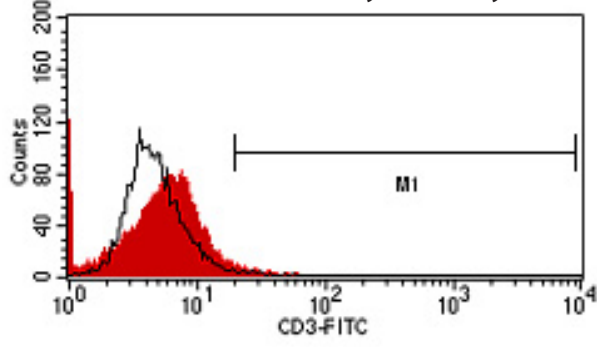
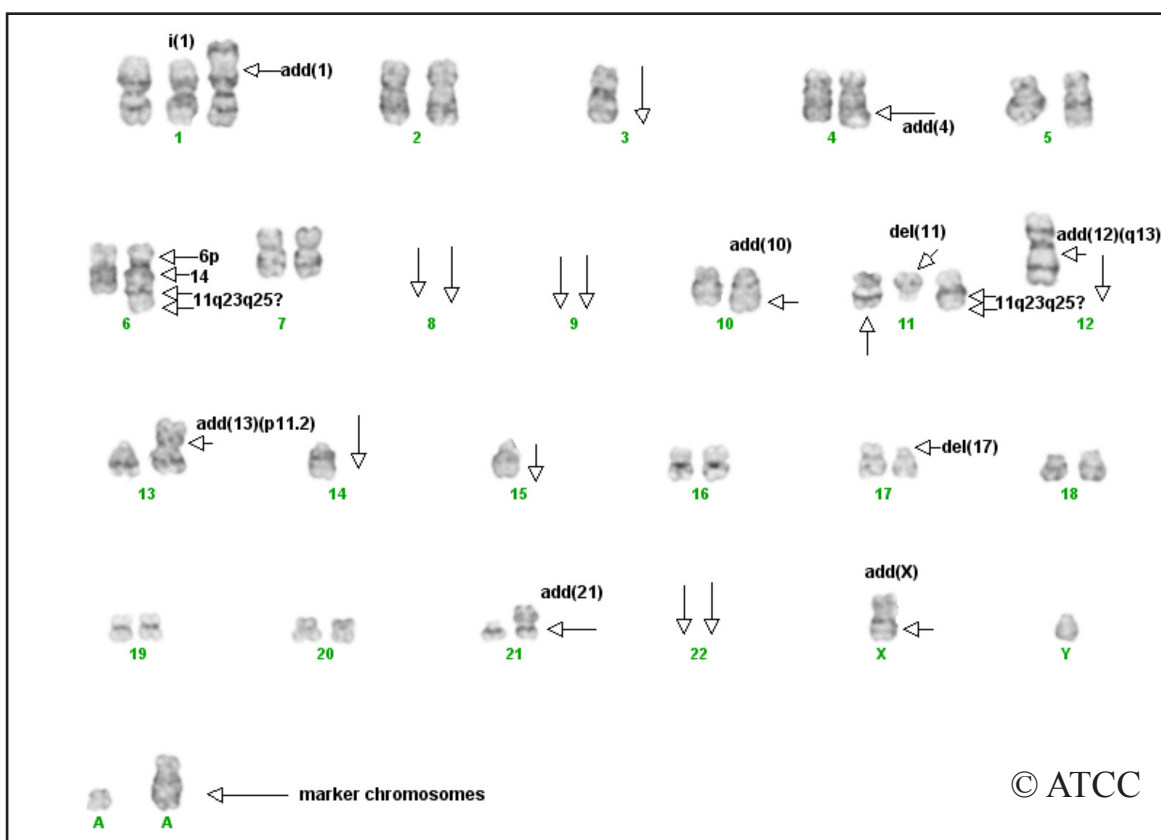


ATCC® CRL-3008™ (MAVER-1)

Biomarkers - Flow cytometry

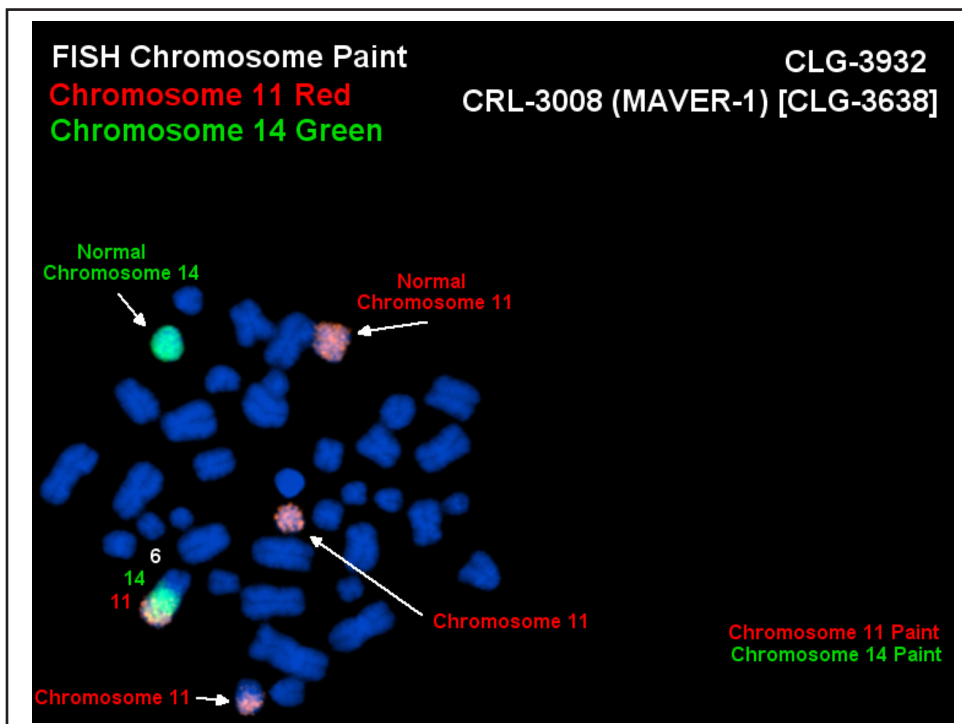


Cytogenetic analysis - G-banding



Modal chromosome number:

This is a hypodiploid cell line of male origin with a chromosome number range of 38-40. The karyotype is highly rearranged and although there has been a loss of chromosome number, most of the cells still contain several of the derivative chromosomes originally described in the literature [PubMed: 16434369]. Specifically, the t(11;14) derivative common to mantle cell lymphoma is present in a complex rearrangement with chromosome number 6, der(6)t(6;14;11)(q13;q11.2;q23?) and was confirmed with whole chromosome paint probes for chromosomes 11 and 14. Other derivatives include add(1)(p36.1), add(4)(q31) and del(11)(q13).



ATCC® Number	Designation	Biomarkers							Cytogenetics
		CD3	CD5	CD10	CD19	CD20	CD23	FMC7	
CRL-3008™	MAVER-1	-	+	-	+	+	-	+	t(11;14) translocation present