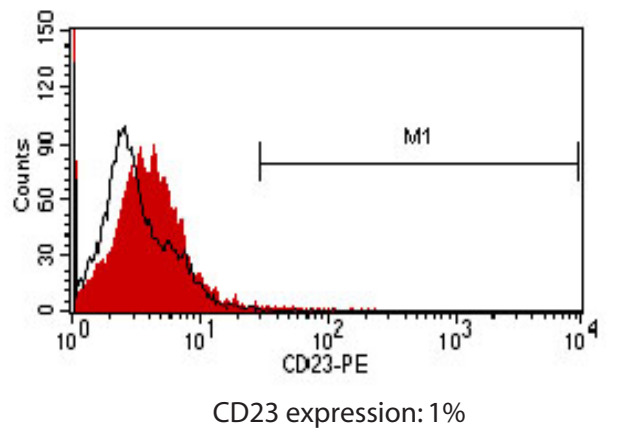
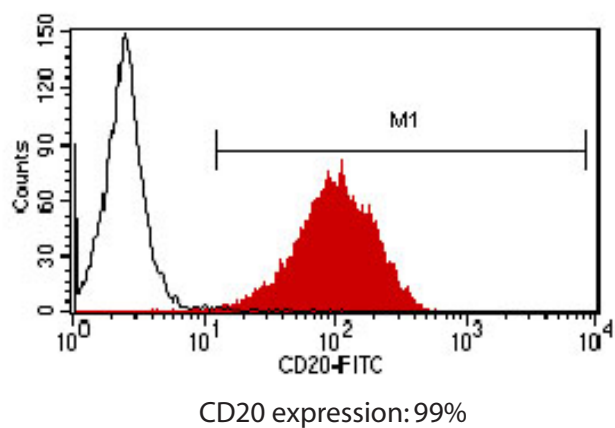
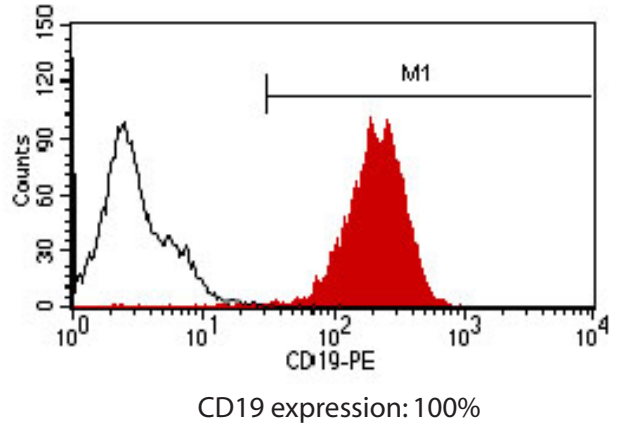
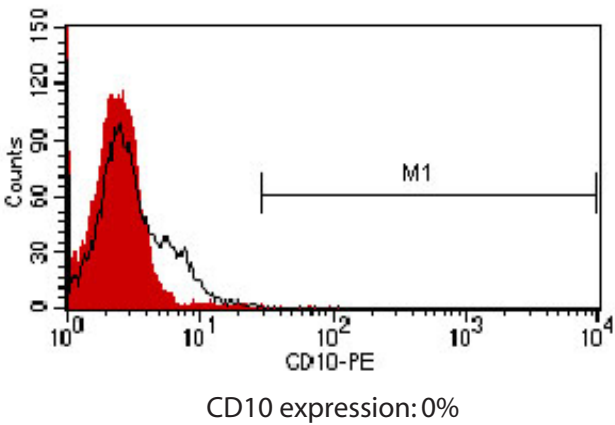
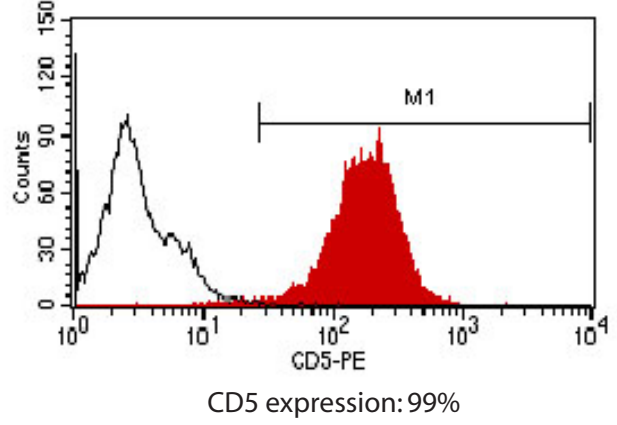
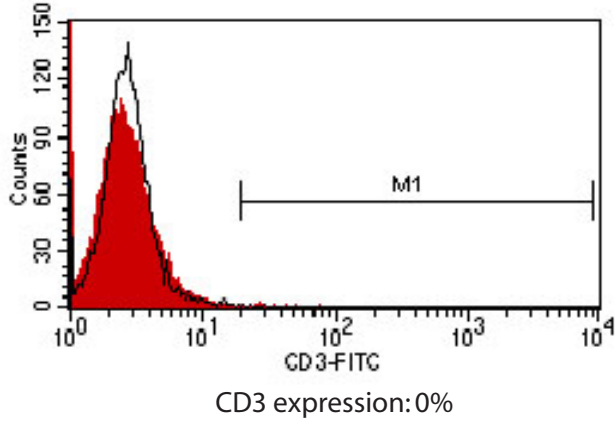
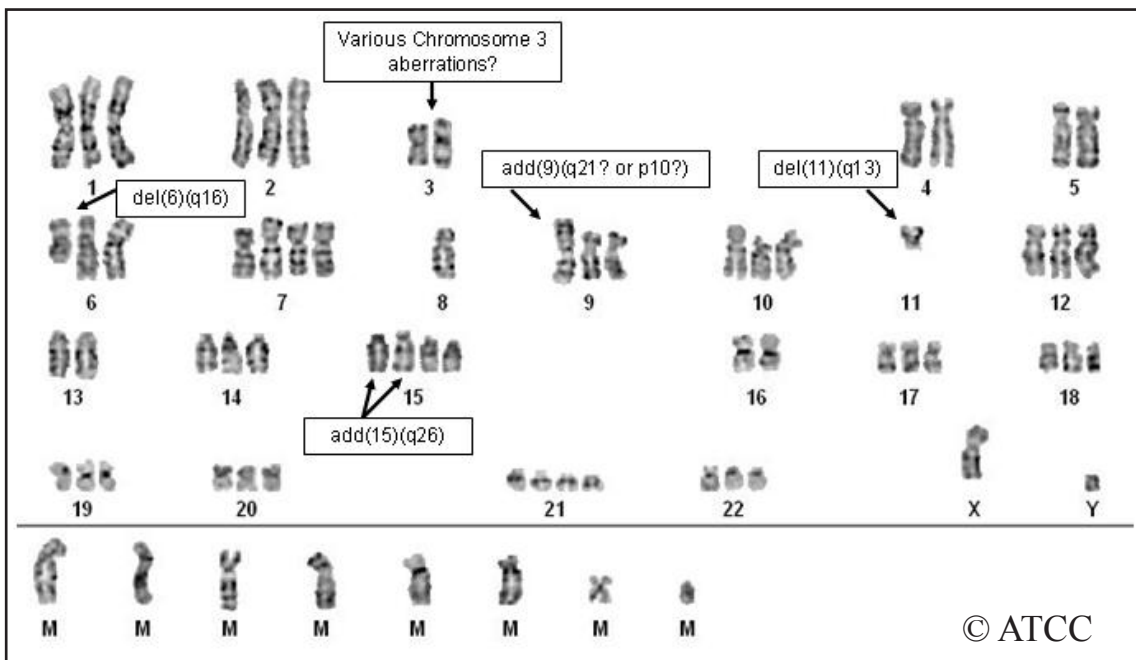


# ATCC® CRL-3000™ (Mino)

## Biomarkers - Flow cytometry



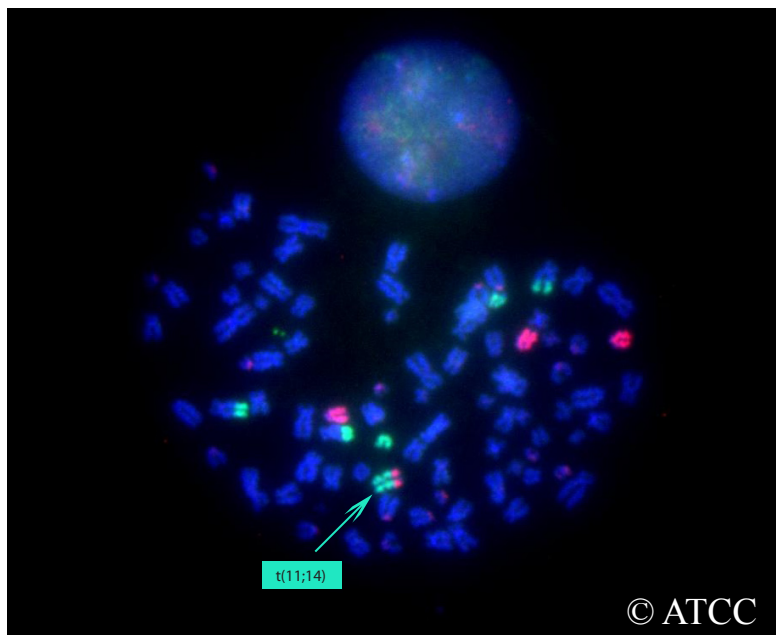
## Cytogenetic analysis - G-banding



Modal chromosome number: 74.

This is a hypertriploid male cell line, del(6)(q16), t(8;11)(q22;q23), add(11)(q25), add(13)(q34), add(14)(q32). Most cells also contained a t(11;14) derivative chromosome, detected by FISH with whole chromosome paint probes.

## Cytogenetic analysis - FISH



Green: Whole chromosome paint 11  
Red: Whole chromosome paint 14