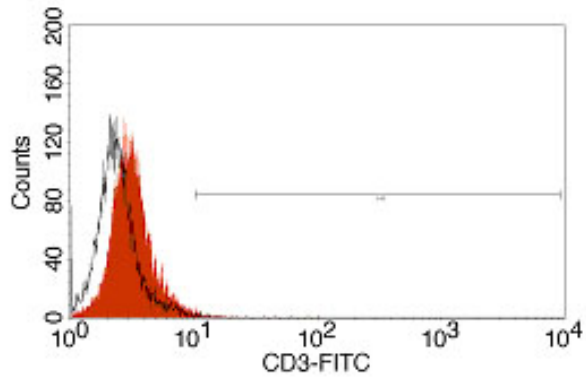
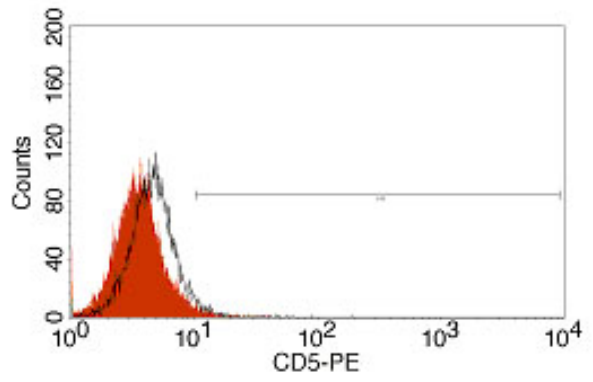


CRL-3001™ (Z-138)

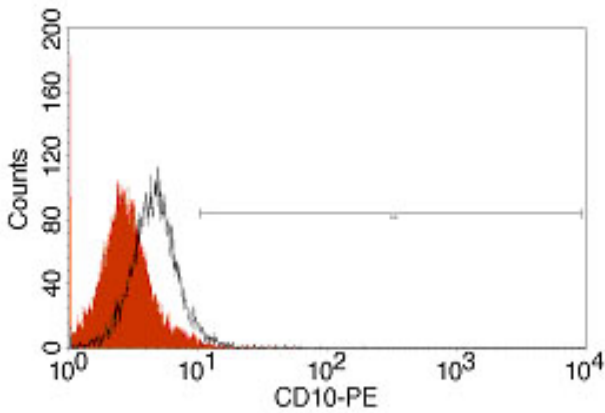
Biomarkers - Flow cytometry



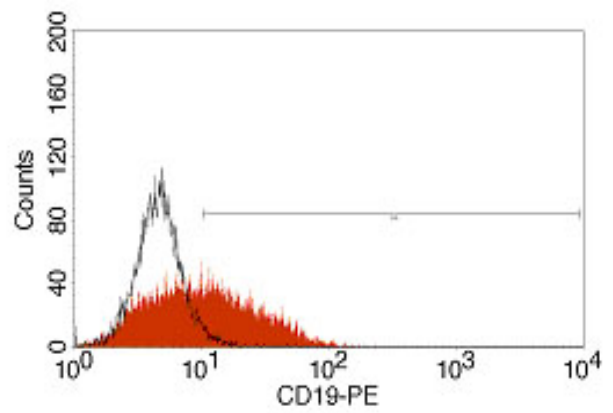
CD3 expression: 1%



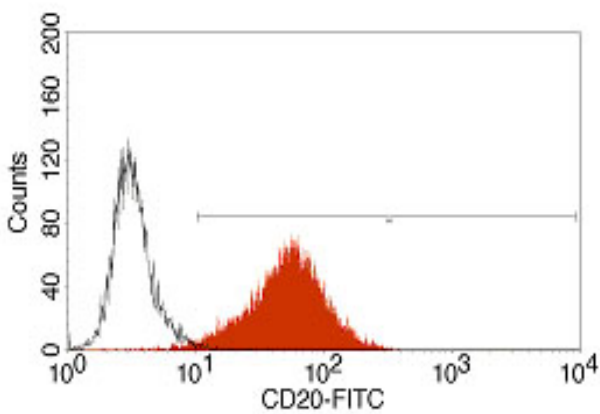
CD5 expression: 2%



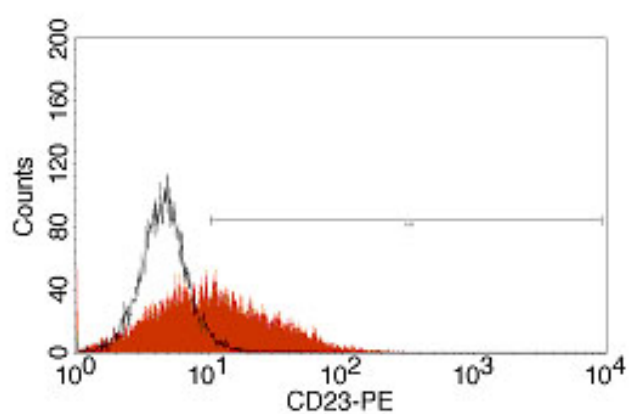
CD10 expression: 0%



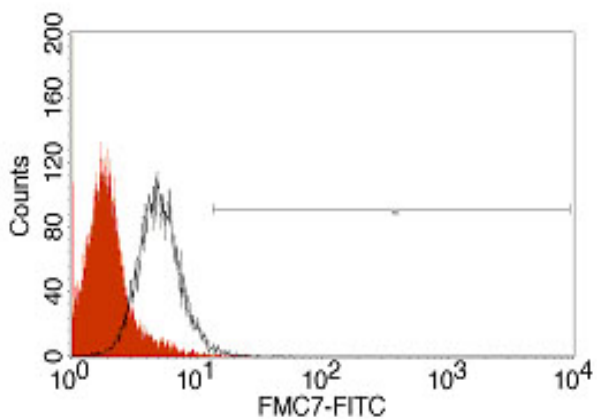
CD19 expression: 47%



CD20 expression: 98%

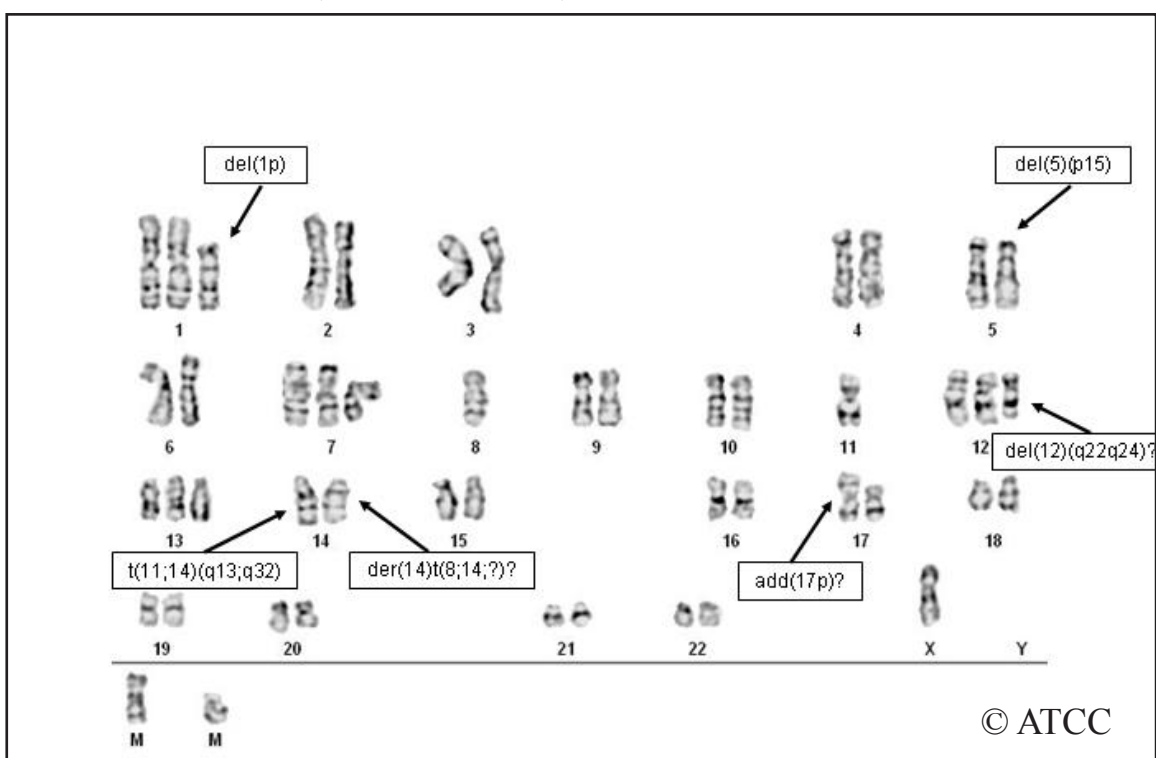


CD23 expression: 49%



FMC7 expression: 0%

Cytogenetic analysis - G-banding



Modal chromosome number: 49

This is a hyperdiploid cell line of male origin with a modal chromosome number of 49 and a polyploidy rate of 4%. Most of the cells examined contain the t(11;14) (q13;q32) derivative chromosome common to mantle cell lymphoma. Also, several other derivative chromosomes present in the karyology are consistent with those described by others.

ATCC® Number	Designation	Biomarkers							Cytogenetics
		CD3	CD5	CD10	CD19	CD20	CD23	FMC7	
CRL-3001™	Z-138	-	-	-	+	+	+	-	t(11;14) translocation present